



PROGRESSIVE MASSACHUSETTS
2026 Legislative
ENDORSEMENT QUESTIONNAIRE

Candidate: Celina A Reyes

Office Sought: State Representative - 16th Essex District

Party: Democrat

Website: www.celinareyes.com

Social Media Handles:

- **Facebook:** Celina Reyes for State Representative
- **Instagram:** Celina Reyes for State Representative

OVERVIEW

We view our questionnaire as an educational resource, for both candidates and voters, on progressive approaches to the issues. It provides candidates the opportunity to address a number of important issues beyond the surface talking points and provides progressive voters an extremely valuable resource when making a decision.

Our Questionnaire starts with an “About You” section and ends with an opportunity for you to include additional remarks beyond what we asked.

The bulk of our questionnaire is focused on the issues outlined in our [Progressive Platform](#), which also inform our [Legislative Agenda](#). We are interested in your overall philosophy as well as your views on specific policy and legislation.

Each section features charts or graphs (with links to sources) that illustrate one or more facets of the issue under discussion.

*Each section contains open-ended questions and YES/NO questions. **If the question is a YES/NO question, please answer either YES or NO.** If you leave a question blank, your answer will be recorded as a NO. Feel free to expand your answers, but **please keep answers < 150 words** and use your own words (we want human-generated answers, not AI-generated).*

Issue Subsections:

- A. Revenue and Taxation
- B. Jobs and the Economy
- C. Education
- D. Health Care
- E. Housing
- F. Community Safety
- G. A Humane Immigration System
- H. A Welcoming Society
- I. Good Government and Strong Democracy
- J. Sustainable Infrastructure and Environmental Protection

I. About You & Your Governing Approach

1. Why are you running for office? And what would be your top 3 priorities if elected?

I am running because families in my community are struggling with rising housing costs, lack of affordable childcare, and economic instability. As a working mother, educator, and community leader, I have lived these challenges and worked directly with families facing them.

My top three priorities are: expanding affordable housing and rent stabilization, investing in childcare and early education, and strengthening workers' rights and economic opportunities.

Through my work as a City Councilor, union leader, and Co-Founder of Entre Amigos, I have seen the impact of strong public investment. I am running to ensure our state government delivers real solutions that support working families and create opportunity for all.

2. What prepares you to serve in this capacity?

I bring a combination of lived experience, public service, and community leadership. I have served as an At-Large City Councilor in Lawrence, where I have worked on improving infrastructure, public safety, and community engagement.

As a childcare provider and small business owner, I understand the challenges working families face. As President of SEIU Local 509 Family Child Care Chapter, I have organized and advocated for better wages and conditions for educators.

Through Entre Amigos, I have developed programs that empower families and build community leadership. These experiences have prepared me to lead, collaborate, and deliver results at the state level.

3. Do you consider yourself progressive, and if so, how would you define “progressive”?

I consider myself a progressive. To me, being progressive means fighting for policies that promote equity, economic justice, and opportunity for all, especially for working families and communities that have been historically excluded.

It means ensuring that everyone has access to affordable housing, quality education, healthcare, and fair wages. It also means addressing systemic inequalities and investing in communities to create long-term stability and growth.

My work as a union leader and community organizer reflects these values. Being progressive is about building a government that is responsive, inclusive, and committed to improving people's lives.

4. What do you view as the biggest obstacles to passing progressive policy at the state level, and how do you plan to overcome these obstacles?

One of the biggest obstacles is political resistance from entrenched interests and a lack of urgency to address systemic issues. Limited resources and competing priorities can also slow progress.

I believe these challenges can be overcome by building strong coalitions, engaging communities, and maintaining consistent advocacy.

Through my experience with SEIU and Entre Amigos, I have worked with diverse groups to push for change. I will continue to build partnerships with labor, community organizations, and fellow legislators to advance policies that reflect the needs of our communities.

5. What is one policy pioneered by another state (or at the municipal level) that you would like to see Massachusetts adopt?

I would support implementing a statewide public bank, similar to the model in North Dakota. A public bank can provide affordable financing for small businesses, housing development, and community-based projects.

This approach would help us invest directly in our communities while reducing reliance on large financial institutions.

It aligns with my commitment to economic justice and expanding access to capital for working families, small businesses, and community organizations.

6. Provide an example of a time that you built a broad coalition to achieve a desired outcome.

As President of the SEIU Local 509 Family Child Care Chapter, I have built strong coalitions with childcare providers, labor organizations, and community leaders to advocate for better wages, benefits, and working conditions.

I have also worked alongside advocates and community partners to advance major statewide policies, including the Fair Share Amendment, Paid Family and Medical Leave (PFML), the Fight for \$15, and minimum wage increases. Additionally, I have supported organizing efforts that included rideshare drivers, including Uber drivers, to advocate for fair treatment and protections.

This work required building trust across diverse groups, coordinating advocacy efforts, and staying committed to shared goals. These experiences have shown me that meaningful change happens when we bring people together and build collective power.

7. (For incumbents only) Each year, Progressive Massachusetts compiles a scorecard of key roll call votes, available at <https://scorecard.progressivemass.com>. Please use this space to explain any discrepancies between your votes and the progressive position.

8. (For challengers or candidates in open races only) How do you see yourself as similar to or different from the current holder of the office you are running for?

I bring a community-centered and worker-focused approach rooted in lived experience. As a City Councilor, union leader, and Co-Founder of Entre Amigos, my work has focused on directly engaging with residents and addressing the real challenges facing working families, seniors, and small businesses.

I believe what sets me apart is my background as an organizer and union leader. I have worked alongside workers, supported them in their workplaces, and advocated for policies that improve their daily lives. My campaign is deeply grounded in grassroots organizing and community relationships.

I am committed to being an accessible, responsive, and accountable leader who prioritizes working people and ensures their voices are represented at the State House.

II. The Issues

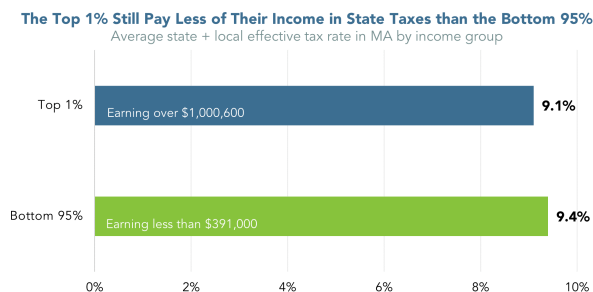
A. Revenue and Taxation

Although Massachusetts has developed the moniker of “Taxachusetts,” our history shows the opposite. Between 1977 and 2016, Massachusetts [reduced state taxes](#) by more than all but two other states. Because of income tax cuts enacted between 1998 and 2002, Massachusetts lost over \$4 billion in tax revenue *each year*—\$4 billion not invested in our roads, bridges, schools, parks, and services. Such cuts to the state income tax, combined with [low corporate income taxes compared to other states](#), have meant increasing reliance on regressive taxes and fees and curtailing our ability to invest in vital infrastructure. It also restricts legislators’ ability—and willingness—to pass new and visionary legislation, as there is a continual shortage of funds for existing priorities.

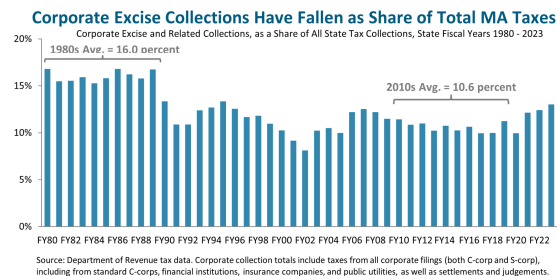
Although we saw a welcome shift when MA voters passed the Fair Share Amendment and added more progressivity to our tax code, the Legislature in 2023 voted to give tax cuts to multi-million-dollar estates, large corporations, and day traders, blunting the full impact of the win. We cannot tax-cut our way into competitiveness; MA strengthens our competitiveness when we invest in our people and infrastructure.

Moreover, Massachusetts faces the threat of steep federal budget cuts, but given that we have the same GDP as the country of Sweden, we have the ability to raise the revenue to meet needs if we have the will to do so.

Even with the recently passed Fair Share Amendment, the top 1% still pay a lower effective tax rate than the bottom 95%.



Even as corporations are securing an increasing share of total income, their share of taxes has been falling.



1. What principles do you bring to considerations of state revenue and tax policy? How should we raise more revenue to adequately fund our communities for the future?

I believe Massachusetts needs a tax system that is fair, transparent, sustainable, and focused on the common good. Our revenue policy should ask those with the greatest ability to pay—large corporations and the extremely wealthy—to contribute their fair share, while protecting working families, renters, seniors, and small businesses.

To build strong communities for the future, we need reliable revenue to invest in public education, transportation, housing, local aid, health care, climate resilience, and safe neighborhoods. That means closing ineffective corporate tax loopholes, reviewing tax breaks regularly, preventing tax giveaways that do not produce clear public benefits, and modernizing our tax code so it keeps pace with today's economy. I support progressive revenue policies that make our tax system more equitable and that ensure public dollars are used responsibly and transparently.

I also believe that municipalities should have stronger tools to support local services, especially in communities where major tax-exempt institutions benefit from public infrastructure and city services. At the state level, we should protect revenue from harmful cuts, use reserves strategically during fiscal stress, and prioritize long-term investments that expand opportunity and economic stability for everyone.

2. Optional/As Applicable: Please indicate work you personally have done to advance your principles on revenue and taxation (legislation, community work, published writings, etc.).

My public service has been guided by the belief that the government must invest in working families, children, education, infrastructure, and community well-being. In my work, I have consistently supported policies that strengthen public services, promote accountability, and ensure that communities receive the resources they need. I view tax and revenue policy as a core part of economic justice because without fair and adequate revenue, we cannot deliver the services residents depend on.

You can also make this more specific by adding any local budget, school, housing, infrastructure, or worker-related advocacy you want to mention.

3. **Corporate Tax Breaks.** Corporate tax breaks cost Massachusetts [more than \\$1 billion in foregone revenue](#) each year. Which of the following steps would you support?
 - a. Repealing any tax break that does not provide the intended benefits in a cost-effective manner? **YES**
 - b. Establishing sunset dates for all tax breaks to require periodic review? **YES**
 - c. Ending the current sales tax exemptions for aircraft and aircraft parts, which costs the Commonwealth approximately [\\$30 million](#) each year? **YES**
4. **Corporate Disclosure.** Would you support legislation to make publicly accessible the reports that are already filed annually by publicly traded corporations, detailing their sales, profits, taxable income, and taxes paid? **YES**
5. **Corporate Fair Share.** Large multinational corporations like Amazon and Walmart hide significant profits offshore in order to avoid paying taxes here in Massachusetts and in other states. Would you support legislation to increase the amount of offshored corporate income subject to MA's corporate income tax to 50%, the maximum allowable amount and the amount taxed by most of our neighboring states? **YES**
6. **Taxing Extreme Wealth.** Would you support the establishment of a Massachusetts wealth tax, which applies only to extremely rich taxpayers (with a threshold of at least \$100 million) and taxes them on a percentage (e.g., 1% annually) of their wealth above the threshold? **YES**
7. **Digital Ads Tax.** Would you support imposing new tax targeted at large companies that amass our personal data, either through a data-mining excise tax or a tax on digital advertising, as introduced or passed in states like New York and Washington State? **YES**
8. **Preventing Regressive Tax Cuts.** Massachusetts needs to raise new revenue to advance a progressive agenda. At the same time, we also need to fight regressive tax cuts that weaken our public services.
 - a. MA stands to lose hundreds of millions of dollars in revenue each year due to corporate tax cuts in Trump's Big Ugly Bill that will automatically enter the MA tax code. Do you support permanently decoupling the state tax code from these federal changes? **YES**
 - b. Will you oppose the corporate lobby's ballot question to reduce the state income tax, a measure which would cost the state \$5 billion a year? **YES**
 - c. Will you oppose the corporate lobby's ballot question to reform the state tax collection cap law (62F) in order to make the state more frequently hit the cap and lose out on critical investments? **YES**
9. **Rainy Day Fund.** Massachusetts will see significant budget cuts next year due to Trump's Big Ugly Bill. Would you support using 15% of the rainy day fund in order to prevent cuts? **YES**

10. **PILOT Reform.** Do you support enabling cities and towns to require large tax-exempt not-for-profit institutions (i.e., with property valued at or above \$15M) to make payments in lieu of taxes to the municipality equal to 25 percent of the amount that would be paid if they were not exempt? **YES**

11. **Public Bank.** Would you support the creation of a Massachusetts public bank chartered to provide cost-effective financing for small businesses and municipalities, land trusts and cooperatives, and climate adaptation/remediation projects? **YES**

B. Jobs and the Economy

Massachusetts ranks as one of the top ten [most unequal states](#), as the gains from economic growth have disproportionately benefited the already well-off. Compounding this, we are one of the most expensive states in the country for [health care](#), [housing](#), and [child care](#), all of which strain wages. A strong economy depends on strong wages, as workers spend and help local economies thrive. Although Massachusetts now has a \$15 minimum wage, a living wage for a single adult without children is now [\\$27.89 per hour](#).

In recent decades, unions have been under attack nationally. However, unions played—and continue to play—a pivotal role in creating a strong middle class. With weaker unions (or no unions at all) come weaker social and economic rights and an imbalanced economy. Strengthening the rights and power of labor is essential to an economy that works for all.

Productivity has grown significantly since the 1970s, but it is not being reflected in higher wages.



<https://archive.massbudget.org/reports/swma/>

The minimum wage in Massachusetts is well below a living wage. ([Source](#))

	1 Adult			2 adults (both working)		
	0 children	1 child	2 children	0 children	1 child	2 children
Living Wage	\$30.58	\$58.26	\$76.55	\$19.63	\$31.61	\$39.61
Poverty Wage	\$7.67	\$10.40	\$13.13	\$5.20	\$6.57	\$7.93
Minimum Wage	\$15.00	\$15.00	\$15.00	\$15.00	\$15.00	\$15.00

1. Share your principles and proposals regarding creating good-paying jobs for all and reducing inequality in the Commonwealth.

Massachusetts has one of the strongest economies in the country, yet far too many working families are struggling to afford the basics. The reality is clear: wages have not kept up with the rising cost of housing, health care, and child care, and economic growth has not been shared equitably. I believe that an economy only works when it works for everyone—not just those at the top.

My approach is rooted in economic fairness, dignity of work, and opportunity. Every worker deserves a living wage, safe working conditions, and the ability to support their family without constant financial stress. That means strengthening labor rights, raising wages, and ensuring that workers share in the prosperity they help create.

Unions are essential to building a strong middle class. They raise wages, improve working conditions, and give workers a collective voice. I strongly support policies that protect and expand the right to organize, bargain collectively, and advocate for fair treatment on the job.

To reduce inequality, we must raise wages, close gaps in labor protections, and invest in workforce development, small businesses, and local economies. We also need to address structural barriers that disproportionately impact working-class communities, immigrants, and communities of color.

A strong economy is not measured only by growth, it is measured by whether families can afford to live, work, and thrive in our communities.

2. Optional/As Applicable: Please indicate work you personally have done to advance your principles on creating good-paying jobs for all and reducing inequality (legislation, community work, published writings, etc.).

I support these policies because working people are the backbone of our economy. When workers are paid fairly and treated with dignity, entire communities benefit. Higher wages strengthen local businesses, stabilize families, and create long-term economic growth.

I have also advocated for these issues by organizing workers and lifting up their voices through my leadership with SEIU Local 509 and through community engagement. I have seen firsthand how low wages and lack of protections impact families, and I have worked to push for policies that promote economic dignity and opportunity for all.

3. **Livable Wages.** Although Massachusetts now has a \$15 minimum wage, that is still not a living wage in much of Massachusetts, and \$15 has lost a lot of value due to high

inflation. Do you support the following steps...?

- a. Raising the minimum wage to \$20 per hour? **YES**
 - b. Eliminating subminimum wages? **YES**
 - c. Ensuring that the minimum wage law applies to municipal workers? **YES**
 - d. Indexing the minimum wage to inflation? **YES**
4. **Wage Theft.** Do you support holding businesses responsible for the wage violations of their subcontractors when the work they do is substantially connected to the company's operations? **YES**
 5. **Paid Leave for All Workers.** In 2018, MA passed the strongest paid family and medical leave law in the country. However, the law did not include municipal workers or graduate student workers. Would you support extending the law to make sure that all workers have access to these vital benefits? **YES**
 6. **Paid Time Off.** The US is the only advanced industrial country where workers are not guaranteed paid time off. Would you support legislation to require employers to offer full-time employees at least two weeks of paid time off each year, which they can use for any reason with no loss of pay? **YES**
 7. **Right to Strike.** Would you support legislation to legalize the right to strike for public employees (with the exception of public safety personnel) after six months of failed negotiations with their employer? **YES**
 8. **State House Unionization.** Would you support legislation to extend collective bargaining rights to State House staff? **YES**

C. Education

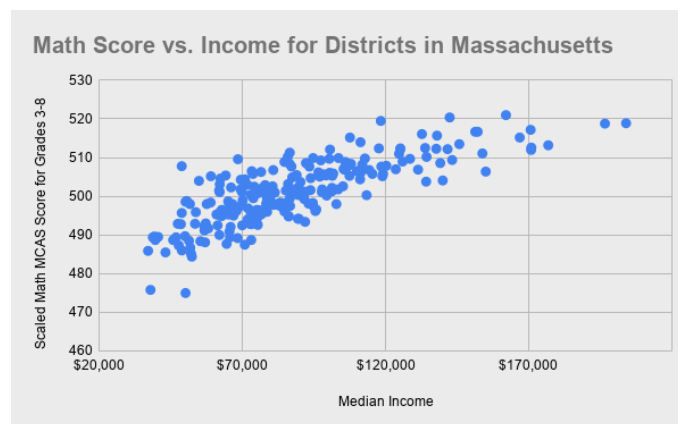
Massachusetts parents and caregivers face the [highest child care and early education costs of any state in the US](#). The average annual cost of infant care in Massachusetts is more than half of what a full-time minimum wage worker earns in a year. These costs are prohibitively expensive for low- and middle-income families, who are forced to choose between making ends meet and saving for the future on one hand, or affording child care on the other.

Public education plays a fundamental role in democracy, cultivating informed, well-rounded community members and providing the knowledge and skills needed for economic mobility and opportunity. Although our public education system gets high marks overall, it remains one of the [most unequal](#) in the country, with significant opportunity and resource divides based on income and race. In 2019, Massachusetts passed the Student Opportunity Act to update the formula for state aid to public school districts and correct these inequities, but schools have faced added strains due to the pandemic and inflation.

Public education has also been under attack by powerful corporate interests seeking to undermine public schools, teachers, and unions. These groups invest millions of dollars to promote the expansion of privately run charter schools, which siphon money from our public K-12 districts while largely excluding students with the greatest needs. Costly, mandated standardized test results are used to label schools as “failing” and justify these privatization schemes. State receiverships in struggling school districts take power away from communities and often facilitate privatization schemes that could never achieve democratic support.

At the same time, our understanding of education has also broadened. No longer do we only talk about K-12 education; rather, most of the [fastest-growing occupations](#) require education beyond a high school diploma. Massachusetts has been disinvesting from public higher education for the past two decades, leading to higher tuition costs and putting students at risk of long-term debt (if they are even still able to attend). Our public colleges and opportunities are an economic engine for local economies as well as a pathway to economic opportunity, and when that opportunity is cut off for students, we all lose out.

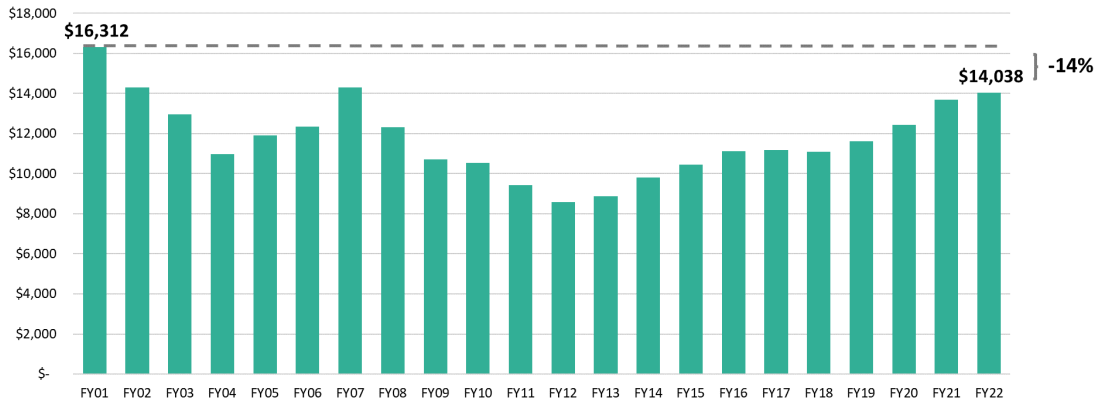
Standardized test scores have a very strong correlation with the income of the school district. ([Source](#))



Massachusetts has been disinvesting from higher education and shifting the cost burden onto students. (Source)

Higher Education Funding Per Student Cut by 14 Percent Since FY 2001

Massachusetts higher education spending, per resident student, FY 2001-FY2022 adjusted for inflation (2024\$)



1. Please share your principles and proposals regarding public education.

I believe education is the foundation of opportunity, equity, and a strong democracy. Every child, regardless of zip code, race, or income, deserves access to high-quality public education, from early childhood through higher education. As an early childhood educator and provider, I have seen firsthand how the high cost of child care places enormous pressure on families. No parent should have to choose between working and affording safe, high-quality care for their children. That is why I strongly support making child care more affordable and accessible, while also ensuring that educators are paid fairly and treated as the professionals they are.

We must also strengthen and fully fund our public K-12 system. While Massachusetts leads the nation in many areas, deep inequities remain. Schools in working-class communities continue to face resource gaps, overcrowding, and unmet student needs. We must fully implement and fix the funding formula under the Student Opportunity Act, address inflation gaps, and invest in wraparound services that support the whole child.

Public education must remain public. I oppose efforts that divert funding away from public schools or weaken local control. Our schools should be accountable to the communities they serve, not privatized interests. At the same time, we must ensure that curricula reflect the diversity, history, and lived experiences of our students, preparing them to thrive in a multicultural society.

Higher education should be a pathway to opportunity—not a source of lifelong debt. We must reinvest in public colleges and trade schools, reduce costs, and expand access so that every student has the opportunity to succeed.

2. Optional/As Applicable: Please indicate work you personally have done to advance your principles on public education.

As the founder and director of a family child care program and a leader within SEIU Local 509, I have dedicated my career to early childhood education and advocating for providers and families. I have worked to elevate the importance of early education, push for better wages and benefits for educators, and ensure that working families have access to quality care.

As a City Councilor, I have supported investments in schools, infrastructure, and community programs that directly impact students and families. My work has always centered on creating opportunities for children and supporting the educators and families who help them succeed.

I support these policies because education is one of the most powerful tools we have to reduce inequality and create opportunity. Investing in early childhood education, strengthening our public schools, and making higher education accessible are essential to the future of our communities.

I have personally advocated for these priorities by speaking up for early childhood educators and working families, including testifying and participating in advocacy efforts that highlight the importance of investing in our education system. My experience as an educator continues to guide my commitment to policies that support children, families, and those who care for them.

3. **Affordable Child Care.** Would you support legislation to make child care free for low-income families and ensure that no family has to pay more than 7% of their income on child care? **YES**
4. **Universal Pre-K.** Would you support creating universal, free Pre-K, accessible to any resident of Massachusetts, integrated into the public school system? **YES**
5. **Charter Schools.** Charter schools siphon millions of dollars for public education away from public schools and create a two-track system of public schools described by the national NAACP as “separate and unequal.” Do you support keeping the cap on charter schools? **YES**
6. **K-12 Education Funding.** Our public schools are losing out on the full benefits of increased funding due to a glitch in how the Chapter 70 formula treats inflation. The combination of several years of high inflation and an inflation cap in education funding calculations has locked in lower levels of aid to districts. Do you support fixing this gap and ensuring that our school districts get the funding they deserve? **YES**
7. **Receivership.** The Lawrence Public Schools and Southbridge Public Schools are

currently under state receivership, with a state-appointed receiver assuming the powers of a superintendent or democratically elected school committee. The state takeover has not produced sustainable gains and has at times been characterized by [chronic mismanagement](#). Would you support ending the practice of state receivership and returning power to democratically elected school committees? **YES**

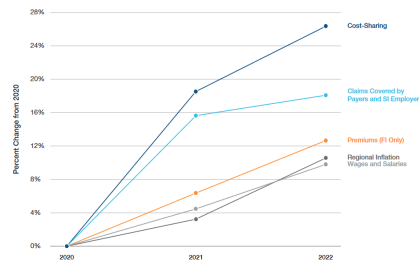
8. **Guaranteed Education for Incarcerated Youth.** Would you support legislation to mandate that at least 6 hours of credited daily education is available for all incarcerated, school-aged youth, including those with IEPs? **YES**
9. **Comprehensive Sex Education.** Do you support requiring public schools to provide age-appropriate, medically accurate information that is inclusive of all sexual orientations and gender identities and includes topics such as consent and the effective use of contraception? **YES**
10. **Inclusive Curricula.** Our educational curricula must speak to students' lived experiences and recognize and celebrate the diversity of our Commonwealth.
 - a. **Racially Inclusive Curricula.** Would you support legislation to ensure that instruction in K-12 education shall include the teaching of accurate histories, writings, and contributions of racial and ethnic groups that have been historically underrepresented or marginalized? **YES**
 - b. **LGBTQ-Inclusive Curricula.** Would you support legislation to ensure that Massachusetts public schools include sufficient instruction on the histories, roles, and contributions of LGBTQ individuals in the history of this country and the Commonwealth? **YES**
11. **Redistributing Institutional Wealth.** Would you support legislation that would levy a small excise tax on private college and university endowments above \$1B to fund free public higher education for all in-state students? **YES**
12. **Debt-Free Higher Ed.** Would you support legislation to guarantee Massachusetts residents can graduate Massachusetts' public colleges and trade schools completely free of student loan debt? **YES**
13. **Supporting Public Higher Ed Faculty.** Would you support ensuring that adjunct faculty and part-time staff are eligible for state health care and retirement benefits? **YES**
14. **Student Protest & Academic Freedom.** Will you support the unequivocal rights of students and faculty to peaceful protest and freedom of expression in Massachusetts' public and private institutions of higher education? **YES**

D. Health Care

Massachusetts has led the way in providing near universal health insurance coverage, with [97% of the state](#) having health insurance. But until that is 100%, we haven't reached truly universal coverage or tackled critical barriers to accessing care. Disparities in insurance coverage and health care access continue to exist along income, racial, and education lines. Premiums continue to rise, and high deductibles mean that many do not get the health care they need—or suffer from long-lasting debt if they do. We still spend an oversized portion of public and private money on health care, but without necessarily achieving better health outcomes.

Cost-sharing has risen faster than claims paid by employers, and premiums are rising faster than inflation.

Private Commercial Insurance Affordability in Context, 2020-2022

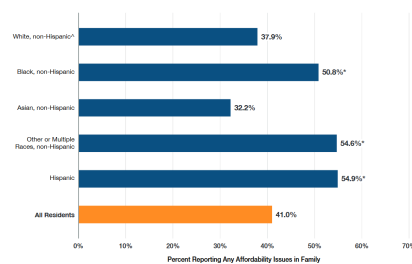


Member cost-sharing and premiums increased at a faster rate than regional inflation and wages and salaries from 2020 to 2022, driven in part by fluctuations in utilization during this time period.

Source: Payer reported data to CNA, Bureau of Labor Statistics data.
 Note: Based on Massachusetts reported membership, which may include non-Massachusetts residents. Claims amounts were adjusted for pharmacy-related reported by payers. Reported cost-sharing, premiums, and claims amounts have not been adjusted to account for benefit carve-outs, which may vary by plan. Claims amounts are published monthly from 2021 to 2022, with 2020 annual estimates for Q1, Q2, Q3, and Q4. 2022 annual 2022 annual. Data for wages and salaries from 2020 to 2022. Data for inflation is from the BLS CPI-U and CPI-U-RS. See technical appendix.

Almost half of Massachusetts residents are facing affordability issues with accessing health care.

Any Affordability Issues Among Residents and their Families, Overall and by Race/Ethnicity, 2021



Over half of Black and Hispanic residents reported experiencing health care affordability issues in the past 12 months.

Source: 2021 Massachusetts Health Insurance Survey.
 Note: Only individuals listed as either as reporting any of the following issues: problems paying family medical bills in past 12 months, family medical bills at the time of survey, spending a high share of family income in past 12 months on out-of-pocket health care expenses, and unmet family health care needs due to the cost of care in past 12 months.
 *Reference group.
 **Difference from reference group is statistically significant at the 5% level.

1. Please share your values, principles, and proposals regarding health care access and equity.

Health care is a human right. In Massachusetts, we have made important progress toward expanding coverage, but coverage alone is not enough. Too many residents, especially working families, immigrants, and communities of color, still struggle to afford care, face high deductibles, or delay treatment because of cost. My approach is grounded in equity, affordability, and access. We must move toward a system where everyone can receive the care they need, when they need it, without fear of financial hardship. That means lowering costs, eliminating barriers, and addressing the root causes of health disparities.

We must reduce out-of-pocket costs, expand preventive and behavioral health services, and invest in community-based care. Mental health care, substance use treatment, reproductive health, and maternal care must all be treated as essential, not optional. At the same time, we must ensure that our health care system is culturally competent and accessible to all communities.

I support bold reforms that move us toward universal coverage and cost control, while protecting patient rights and expanding access to comprehensive care.

2. Optional/As Applicable: Please indicate work you personally have done to advance your principles on health care (legislation, community work, published writings, etc.).

Throughout my work in the community, I have seen how health care access directly impacts families' stability and well-being. As a child care provider and community leader, I have supported families in navigating health systems, connecting them to resources, and advocating for services that meet their needs. As early childhood educators, we experience these challenges firsthand. Many of us do not have access to affordable health insurance, despite the essential role we play in supporting working families and the economy. Personally, I pay nearly \$2,000 per month for a family health insurance plan covering just three people—an unsustainable cost that reflects the broader crisis facing child care providers across Massachusetts.

Through my leadership with SEIU Local 509, I have advocated for better access to affordable health care and benefits for providers and working families, because no one who cares for our children should have to struggle to access care themselves. I support these policies because access to affordable, comprehensive health care is essential to dignity and stability. No family should have to choose between getting care and meeting basic needs.

I have advocated for these issues by sharing the real experiences of working families and early childhood educators, including the high cost of health insurance and lack of access to affordable care. Through my work and community

engagement, I have helped elevate these challenges and push for more equitable solutions that ensure everyone can access the care they need.

3. **Single Payer.** Would you support legislation to enact a single payer health care system in Massachusetts, which would guarantee health insurance as a right? **YES**
4. **Medical Debt.** States like Connecticut and Arizona have taken action, in partnership with RIP Medical Debt, to eliminate medical debt for hundreds of thousands of working-class residents. Would you advocate for similar action in Massachusetts? **YES**
5. **Full Spectrum Pregnancy Care.** Would you support requiring health insurance plans to cover all pregnancy care (including prenatal care, childbirth, and postpartum care), without any kind of cost-sharing, building on the recent mandate to require coverage for abortion and abortion-related care? **YES**
6. **Abortion Access - 1 .** Young people under sixteen seeking an abortion must obtain parental consent or judicial authorization. While most young people involve their parents, many cannot, causing delays to timely medical care and counseling. Scared teens may also turn to dangerous measures: going out of state or risking their lives and health with illegal or self-induced abortion. Would you support repealing this restriction on young people's access to abortion? **YES**
7. **Abortion Access - 2.** Despite recent overdue updates to abortion care protections in Massachusetts, dozens of patients have to travel out of state every year for necessary care. Would you support expanding abortion access after 24 weeks of pregnancy when in the best professional judgement of a licensed physician? **YES**
8. **Anti-Abortion Centers.** In Massachusetts, anti-abortion centers (also known as crisis pregnancy centers), which have a politically-motivated agenda to dissuade and delay patients from accessing abortion care, outnumber abortion clinics by more than 2 to 1. These centers scare and shame pregnant people considering abortion care and often oppose birth control and emergency contraception. Would you commit to opposing any Massachusetts government support and funding for such centers? **YES**
9. **Overdose Prevention Centers.** An essential part of addressing the opioid crisis, overdose prevention centers allow medical professionals to respond to overdoses and engage participants in medical and behavioral health services. Would you support the legalization of overdose prevention centers? **YES**
10. **Vaccination.** Would you support legislation to eliminate non-medical exemptions to the routine vaccines for children required for school entry, as our neighbors in Maine, Connecticut, and New York have already done? **YES**

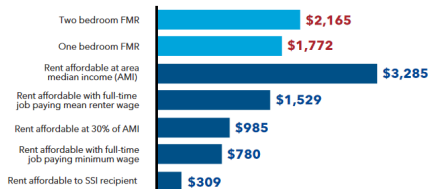
E. Housing

Massachusetts has a lot to offer, but that does little if people can't afford to live here. The [US News & World Report's annual state rankings](#) put Massachusetts at #40 in housing affordability (and #47 in cost of living). To rent the average 2-bedroom apartment in Massachusetts requires an income equal to [\\$41.64 per hour](#), more than twice the minimum wage. A minimum-wage worker in Massachusetts would need to [work 91 hours each week](#) to afford a modest 1-bedroom rental home at fair market rent.

Home ownership has become increasingly out of reach, as the state's median home price is [approximately \\$600,000](#). In more than 20 communities, the median home price recently [passed \\$1 million](#). Meanwhile, we have some of the [most restrictive zoning laws](#) in the country, making it difficult to build more housing to meet the needs of a growing population.

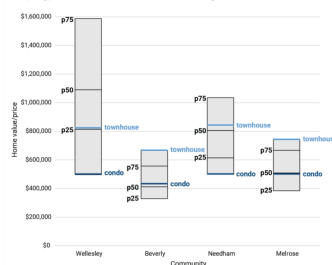
The high cost of housing has led to displacement, and in a growing number of municipalities, the local workforce can no longer afford to live there.

With rental increases far outpacing wage increases, many are left with housing instability.



The overreliance of single-family housing in suburban development, as opposed to denser or multi-family housing, makes communities unaffordable.

Small multifamily condos expand affordability in the wealthiest communities
Comparing prices of new townhouses and condos to existing homes



Source: Existing home values taken from the Census Bureau's American Community Survey 2014-2018. Prices for new townhouses and condos from Crump, Mattos, Schatz and Schuster (2020).



1. Please share your principles and proposals regarding affordable housing and housing affordability in the Commonwealth.

Housing is a fundamental human need, and in Massachusetts, it has become increasingly out of reach for too many families. The rising cost of rent and homeownership is pushing working families out of their communities, creating instability and deepening inequality.

My approach to housing is rooted in affordability, stability, and equity. Everyone deserves access to safe, stable, and affordable housing in the communities where they live and work. That means we must increase housing production, especially affordable and workforce housing—while also protecting tenants from displacement and unjust rent increases.

We need a balanced strategy that includes zoning reform to allow for more multi-family and transit-oriented development, stronger tenant protections, and increased investment in affordable and social housing. At the same time, we must ensure that local residents are not priced out of their own neighborhoods. Housing is directly tied to economic opportunity, education, and public health. If families cannot afford housing, every other system is strained. That is why I support bold, comprehensive solutions that address both supply and affordability while keeping communities intact.

2. Optional/As Applicable: Please indicate work you personally have done to advance your principles on housing (legislation, community work, published writings, etc.).

I support these policies because Massachusetts is facing a housing crisis that requires urgent and comprehensive action. We must increase supply, protect tenants, and ensure that working families can continue to live in the communities they help sustain. Housing stability is essential for strong schools, a healthy workforce, and vibrant local economies.

I have also personally advocated for these issues by testifying on multiple occasions at the State House, raising the voices of working families and highlighting the real impact that housing costs have on our communities. These experiences have reinforced my commitment to advancing policies that make housing more affordable, equitable, and accessible for all.

3. **Emergency Shelter.** How would you evaluate Governor Healey's response to the emergency shelter crisis?

I support continuing to address the shelter crisis with compassion, accountability, and collaboration, while ensuring resources and support for both families in need and our local communities.

4. **Welcoming New Neighbors.** Would you support efforts to locate both long-term

housing and short-term shelter in your district? **YES**

5. **Everyone Needs ID.** Would you support easing access to Mass IDs for people experiencing homelessness by waiving the \$25 fee for IDs and easing the verification requirements for youth and adults who are unhoused and seeking IDs? **YES**
6. **Local Option Real Estate Transfer Fee.** Would you support enabling all cities and towns the flexibility to design and pass real estate transfer fees that will be effective in their municipalities to raise money for affordable housing production? **YES**
7. **Green and Affordable Communities.** Would you support doubling the current Deeds Excise Tax (from \$4.56 per \$1,000 to \$9.12 per \$1,000), upon the sale of real property in Massachusetts, to create a new funding stream to be split evenly between affordable housing and climate resiliency? **YES**
8. **Rent Control.** Massachusetts residents face some of the highest and fastest-growing rents in the country.
 - a. Would you support lifting the statewide ban on rent control and enabling cities and towns to pass rent stabilization ordinances to limit annual rent increases? **YES**
 - b. Do you support the proposed 2026 statewide ballot initiative to limit annual rent increases? **YES**
9. **Tenant Opportunity to Purchase.** Would you support providing tenants of small, medium, and large multifamily properties with the right of first refusal when the owner plans to put a building on the market? **YES**
10. **Right to Counsel.** Would you support legislation to provide legal representation for low-income tenants in eviction proceedings? **YES**
11. **HDIP Reform.** The Housing Development Incentive Program (HDIP) is a multimillion-dollar annual state tax credit program subsidizing market-rate housing in Gateway Cities. Would you support reforming this program to support both market-rate and affordable housing development? **YES**
12. **Social Housing.** Social housing is publicly financed, mixed-income housing, owned by a local or regional housing authority. Would you support efforts to increase state funding for social housing initiatives? **YES**
13. **Zoning Reform.** Would you support zoning reforms to increase housing production and create more affordable and environmentally sustainable communities such as...
 - a. Requiring multi-family zoning and removing costly parking mandates around public transportation and city/town centers statewide? **YES**
 - b. Enabling communities to adopt inclusionary zoning ordinances (i.e., requirements that a certain percentage of new units in a development be affordable) by simple majority vote? **YES**
14. **MBTA Communities Law Enforcement.** Would you support measures to strengthen the law with stricter consequences for municipalities that refuse to comply, including voiding non-compliant zoning? **YES**

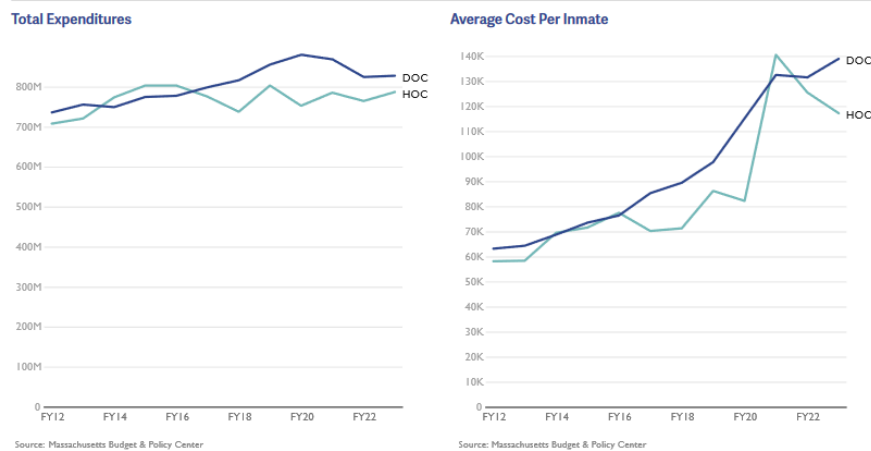
F. Community Safety

Mass incarceration in Massachusetts has proven socially and economically destructive, breaking apart communities across the state. Even though Massachusetts has one of the lowest incarceration rates of the United States, we have some of the [starkest racial disparities in incarceration](#), a result of overpolicing and systemic biases.

Although incarceration rates in Massachusetts have gone down over the past few years as a result of policies from the 2018 criminal justice reform omnibus bills, spending on the Department of Correction has [risen](#). The average cost per year to house an individual in the Massachusetts Department of Corrections is [more than](#) \$100,000, money that could be better reinvested into the communities that have suffered from decades of misguided and racially discriminatory “tough on crime” policies. To achieve “justice for all,” we need a judicial system that does not disproportionately target communities of color and the poor and that does not criminalize public health issues such as addiction.

The correctional population in Massachusetts has declined, yet the state continues to increase the Department of Corrections budget.

Figure 14: Total expenditures for correctional institutions and average cost per inmate, inflation-adjusted to 2023 dollars



Although MA’s incarceration rate is lower than the national rate, racial disparities are even more stark. ([Source](#))

Statistics (2022)	MA	US Total
Imprisonment rate (per 100K residents)	94	355
Black : White Disparity	7 : 1	4.8 : 1
Latinx : White Disparity	4 : 1	1.3 : 1

1. Please share your principles and proposals regarding community safety, police accountability, and criminal legal reform.

Public safety means that every person in our community feels safe, respected, and protected—regardless of their background, race, or zip code. True safety comes not only from effective policing, but from strong, healthy communities with access to education, housing, mental health services, and economic opportunity.

My approach is rooted in accountability, equity, and prevention. We must ensure that law enforcement operates with transparency and accountability, while also investing in community-based solutions that address the root causes of crime. This includes expanding access to mental health services, youth programs, violence prevention initiatives, and reentry support for returning citizens.

I believe we can support both public safety and justice by building trust between communities and law enforcement, ensuring that systems are fair, and addressing the disparities that have historically impacted communities of color and low-income families.

2. Optional/As Applicable: Please indicate work you personally have done to advance your principles on community safety, police accountability, and criminal legal reform (legislation, community work, published writings, etc.).

I support these policies because true public safety requires fairness, accountability, and opportunity. We must ensure that our systems do not disproportionately harm certain communities, and that individuals are treated with dignity and respect.

Through my ongoing engagement with residents—including monthly focus groups and my “Cafecito Fridays”—I have heard directly from community members about their experiences, concerns, and hopes for a safer, more just system. These conversations have reinforced my commitment to policies that promote transparency, reduce harm, and invest in community-based solutions that build trust and long-term safety.

3. **Police Accountability.** The 2020 police accountability law passed by the Massachusetts Legislature contained a number of steps forward, but important measures were left out. Would you support legislation to do the following?
 - a. Eliminating qualified immunity for state and local police and correctional officers so that individuals whose constitutional rights are violated can have their fair day in court? **YES**
 - b. Enacting the recommendations from the special legislative commission on facial recognition, to implement privacy, civil rights, and due process protections to govern police use of the technology? **YES**

4. **Sentencing Reform.** The 2018 criminal justice reform bill was an important first step in

reducing mass incarceration. However, in our “liberal” state, incarceration rates remain much higher than they are in other countries, and sentencing laws can be even more punitive than those in states viewed as conservative. Do you support the following reforms?

- a. Eliminating mandatory minimums for all drug offenses? **YES**
 - b. Raising the age of criminal majority from 18 to 21, in line with research that shows that young offenders served by a juvenile system are much less likely to reoffend and more likely to successfully transition to adulthood? **YES**
 - c. Decriminalizing consensual sexual activity between adolescents, by creating an exception to the statutory rape law for youth close in age? Massachusetts is one of only three states that criminalizes consensual sexual activity between two adolescents. **YES**
 - d. Eliminating the sentence of life without parole, which is costly and has been shown to be racist in its application? **YES**
 - e. Restructuring joint venture sentencing such that accomplices to murder are sentenced proportionally to their level of responsibility for a death rather than a minimum sentence of life without parole? **YES**
5. **DOC Oversight -- I.** Would you support legislation to establish an inspector general for the Department of Correction? **YES**
 6. **DOC Oversight -- II.** Massachusetts legislators have the statutory right to make unannounced visits to correctional facilities run by the state. Would you commit to visiting, whether announced or scheduled, Department of Corrections facilities as a state legislator? **YES**
 7. **Solitary Confinement.** Would you support legislation to create universal access to productive out of cell time with programming, education and vocational training for all incarcerated people? **YES**
 8. **Prison Moratorium.** Would you support a moratorium on the construction of new prisons and jails in the Commonwealth? **YES**
 9. **Keeping Families Connected.** Would you support eliminating the arbitrary, unnecessary restrictions on visitation rights in prisons and jails? **YES**
 10. **Clean Slate.** The Massachusetts court system maintains a database of name-based court arraignment records, referred to as Massachusetts Criminal Offender Record Information (CORI). Many people are trapped in poverty and shut out of jobs and housing because of the difficult process to expunge their records, even for cases that did not end in a conviction or occurred when they were teenagers. Would you support...
 - a. Requiring the Commissioner of Probation to automatically seal criminal and juvenile records after the applicable waiting periods without requiring individuals to file a petition to do so? **YES**

- b. Requiring the immediate sealing of a criminal offense if the charge did not end in a conviction? **YES**

- 11. **Reentry.** The Department of Correction's stated mission is to "prepare [individuals in custody] for safe and successful reentry into the community," but regularly fails to live up to that. Do you support the following measures to strengthen reentry efforts...
 - a. Mandating that correctional facilities in Massachusetts assist incarcerated individuals in acquiring valid Massachusetts identification cards before their release? **YES**

 - b. Increasing funding for reentry-related programming? **YES**

- 12. **Gun Violence Prevention.** Will you vote YES to protect the 2024 gun safety bill on the ballot in November 2026? **YES**

G. A Humane Immigration System

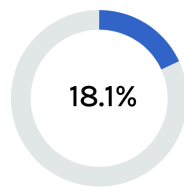
Immigrants make up [18%](#) of Massachusetts's population; however, demagoguery against, or indifference to, immigrant populations has historically been a mainstay of Massachusetts politics. We too often see both Democrats and Republicans fear-monger about immigration and the border, championing policies that criminalize rather than welcome.

Since Trump took office in January, ICE has escalated its activities in Massachusetts, terrorizing immigrant communities. ICE arrests have gone up by more than [250%](#) since last year, driven by their targeting of individuals without criminal records. ICE has brutalized children, torn families apart, and engaged in rampant racial profiling.

Our immigrant communities are helping to keep our communities healthy, they are innovating and educating, and they are helping us build a better future for all of us.

Immigrants are a major part of MA's economic prosperity. ([Source](#))

OVERVIEW



Immigrant share of population

1,270,500

Number of immigrant residents

\$51.8B

Immigrant spending power

\$20.4B

Immigrant tax contributions

2023

Data year

1. Please share your principles and proposals regarding welcoming and protecting our immigrant communities.

Immigrants are an essential part of our communities, our economy, and our shared future. I believe Massachusetts must lead with compassion, dignity, and respect for all people, regardless of immigration status.

My approach is rooted in protection, inclusion, and opportunity. No family should live in fear of being separated, and no one should be afraid to go to school, seek medical care, or report a crime because of their immigration status. We must ensure that state and local systems build trust, not fear, within immigrant communities.

I support policies that protect immigrant rights, expand access to legal services, and strengthen language access. We must also ensure that our local and state institutions are not used to carry out harmful federal immigration enforcement actions that undermine community safety.

Immigrants are not only contributors, they are leaders, workers, parents, and

neighbors who make Massachusetts stronger every day.

2. **Optional/As Applicable:** Please indicate work you personally have done to advance your principles on welcoming and protecting our immigrant communities (legislation, community work, published writings, etc.).

As a community leader and elected official, I have worked closely with immigrant families navigating complex systems and facing real fears around immigration enforcement. I have supported families in connecting to resources, legal support, and community organizations.

I have also been actively involved in advocacy efforts alongside organizations such as Cosecha and SEIU, participating in marches like “A Day Without Immigrants,” as well as lobbying efforts at the State House and in Washington, D.C. Through these efforts, I have stood alongside working families to defend immigrant rights and push for policies that protect and uplift our communities.’

Through my regular community engagement, including meetings, advocacy, and my “Cafecito Fridays”, I continue to create spaces where immigrant residents feel heard, supported, and empowered.

3. **Protecting Our Immigrant Neighbors.** The entanglement of state and local law enforcement with ICE’s federal immigration enforcement makes everyone less safe. To end such entanglement, would you support the following measures....?
- a. Preventing police and court officials from inquiring about immigration status? **YES**
 - b. Prohibiting any new 287(g) agreements, i.e., agreements in which state and local law enforcement are deputized to act as ICE agents? **YES**
 - c. Calling on Gov. Healey to end the Department of Correction’s 287(g) agreement with ICE, the only such contract in New England and the only such contract in a state with a Democratic governing trifecta? **YES**
 - d. Prohibiting local law enforcement from assisting ICE such as by allowing ICE to use facilities, properties, and equipment or providing information to ICE such as relating to upcoming court appearances? **YES**
4. **Language Access.** Would you support building the capacity of key public-facing state agencies to meet the language access needs of an increasingly diverse population by standardizing and enforcing language access protocols and practices? **YES**
5. **Immigrant Legal Aid.** In 2025, the MA Legislature created a new fund to provide cost-free legal services to immigrants at risk of deportation. Would you support increasing the funding for the program and codifying the fund into law? **YES**
6. **Community Trust and Accountability.** Would you support legislation to ban former ICE or Border Patrol agents from serving as police officers, teachers, or other public employees in Massachusetts? **YES**

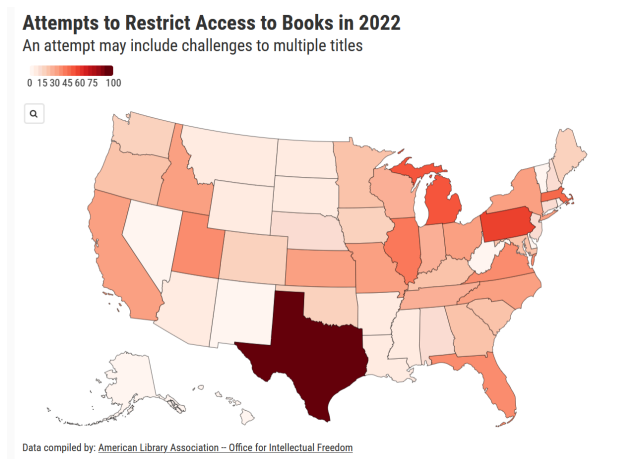
H. A Welcoming Society

Our commonwealth is at its strongest when we recognize and celebrate the diversity of our population.

Massachusetts has often been a leader on LGBTQ rights, being the first state to legalize same-sex marriage and having passed a strong trans anti-discrimination law (with additional protections for health care passed more recently). However, efforts to ban LGBTQ-friendly books are not just a "red state" problem but unfortunately far too common here at home.

Although Massachusetts likes to view itself as a leader in social progress, racial discrimination has been prevalent in our history and in our present, and a legacy of oppression and expropriation of indigenous communities remains unaddressed in policy and iconography.

In 2022, there were 45 attempts to restrict access to books in MA, with 57 titles challenged. ([Source](#))



1. Please explain your principles and proposals relative to building a welcoming society.

Massachusetts is strongest when we embrace diversity, equity, and inclusion. Our communities are made up of people from different backgrounds, cultures, identities, and experiences—and that diversity is our strength.

I believe in building a Commonwealth where everyone feels seen, respected, and valued. That means protecting civil rights, promoting inclusive education, and ensuring that all residents—regardless of race, gender identity, sexual orientation, or background—have equal opportunities to thrive.

We must also actively confront discrimination, protect freedom of expression, and ensure that future generations grow up in a society that reflects truth, inclusion, and respect.

2. Optional/As Applicable: Please indicate work you personally have done to make MA a more welcoming place for all.

Through my work in the community, I have consistently created inclusive spaces where all residents feel welcome and heard. My “Cafecito Fridays” and community engagement efforts bring together people from diverse backgrounds and provide a space for open dialogue, understanding, and connection.

I have worked to uplift voices that are often underrepresented and to ensure that our community reflects the values of respect, inclusion, and unity.

I support these policies because building a welcoming society requires intentional action. Through my direct engagement with residents, I have seen how inclusion strengthens communities and how exclusion causes harm. I am committed to policies that protect rights, celebrate diversity, and ensure that everyone feels they belong.

3. **Right to Read.** Right-wing efforts to ban books from school or public libraries disproportionately target books about LGBTQ people and communities of color. Would you support legislation to prevent book removal due to personal or political views in public and school libraries, require public libraries to adopt the American Library Association’s Library Bill of Rights, and protect librarians from retaliation? **YES**
4. **Data Privacy.** In recent years, we have seen the dangers of unregulated data markets: right-wing groups tracking women seeking abortion care, domestic abusers tracking partners/exes, ICE agents tracking immigrants, and much more.
 - a. Do you support passing legislation to ban companies from selling our sensitive data, such as biometric and location information? **YES**
 - b. Do you support applying a private right of action to privacy laws, to ensure consumers have access to the civil court system when companies violate the law? **YES**
5. **Indigenous People’s Day.** Would you support legislation to replace Columbus Day with Indigenous Peoples in state statute as the recognized holiday on the second Monday of October? **YES**
6. **School Mascots.** Would you support legislation to prohibit the use of Native American mascots in Massachusetts public schools? **YES**

I. Good Government and Strong Democracy

A strong democracy depends on a transparent and representative government and an engaged public. Too often, however, we see centralized, unaccountable power and barriers to participation. An undemocratic, centralized power structure on Beacon Hill makes it easier for lobbyists to target the top and undermine the system. Despite recent reforms, a weak public records system stymies government accountability: MA is one of only two states where all three branches of state government claim to be exempt. A strong democracy requires an engaged electorate, but voter turnout in midterm elections, and especially local elections, remains low. Although election modernization legislation in 2014, 2018, and 2022 helped bring much-needed reforms, we still lag behind states in New England and around the country in making voting accessible (Maine, for instance, has allowed for Election Day Registration since the 1970s).

A centralized power system, a skewed campaign finance system, and restrictive voting laws together help create a situation in which our elections are the [least competitive in the country](#).

MA has the least competitive elections in the country. ([Source](#))

State Legislative Competitiveness Index in Massachusetts, 2010-2024					
Year	Open seats	Incs. in contested primaries	Major party competition	Competitiveness Index	Rank
2010	17.0%	8.4%	48.0%	24.5	39 / 44
2012	5.0%	10.0%	33.0%	16.0	44 / 44
2014	11.0%	9.6%	38.5%	19.7	39 / 44
2016	6.5%	10.7%	23.0%	13.4	44 / 44
2018	12.0%	11.4%	30.0%	17.8	44 / 44
2020	7.5%	12.4%	21.0%	13.6	44 / 44
2022	12.0%	11.9%	30.0%	18.0	44 / 44
2024	9.5%	9.9%	20.0%	13.1	44 / 44

Lower-income, ethnically diverse municipalities have lower voter turnout than whiter, more affluent communities, leading to reduced voice in state politics.

<u>Municipality</u>	<u>Turnout (Nov 2022)</u>
Lawrence	22.8%
Springfield	24.9%
Lowell	29.7%
Chelsea	31.7%
New Bedford	33.0%
Fall River	33.0%
Brockton	33.1%
Southbridge	34.3%
Holyoke	34.4%
Lynn	35.0%

[Source: MassLive](#)

1. Please explain your principles and proposals relative to good government and strong democracy.

A strong democracy requires transparency, accountability, and accessibility. The government must be responsive to the people it serves and create meaningful opportunities for civic participation.

I believe in a government that is open, fair, and accountable. Residents deserve to understand how decisions are made, have access to their elected officials, and be empowered to participate in the democratic process.

We must modernize our systems to increase voter participation, strengthen transparency laws, and reduce barriers that prevent communities, especially working-class and immigrant communities, from fully engaging in civic life.

2. Optional/As Applicable: Please indicate work you personally have done to promote transparency, campaign finance reform, legislative rules reform, and access to voting.

As a City Councilor, I have made accessibility and community engagement a priority. I regularly hold office hours, attend community events, and host "Cafecito Fridays" to ensure residents have direct access to me and a voice in local decision-making.

I have worked to keep residents informed, engaged, and connected to their government, because I believe democracy works best when people feel heard and included.

I support these policies because democracy must be accessible, transparent, and inclusive. Through my work in the community, I have seen that when people are informed and engaged, our government becomes stronger and more responsive. My commitment is to continue building trust, increasing participation, and ensuring that every resident has a voice in shaping the future of our Commonwealth.

3. **Accessibility.** Central to good government is accessibility and responsiveness. Would you commit to the following?

- a. Sending out a newsletter that includes explanations of recent votes at least once per month? **YES**

- b. Holding office hours on weeknights or weekends at least once per month? **YES**

- c. Holding town halls in your district at least twice per year? **YES**

4. **Public Records Law.** Massachusetts is the only state where the Governor's Office, the Legislature, and the Judiciary claim full exemptions from the public records laws. Do you support the ballot initiative to eliminate these exemptions? **YES**

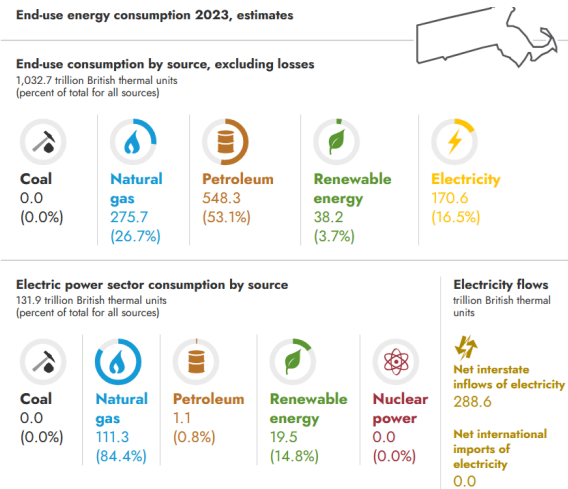
5. **Legislative Accountability.** Massachusetts's system of 'leadership stipends' is an outlier among the 50 states. Do you support the ballot initiative to reform this system to create a fairer pay structure and hold committees to higher standards of transparency and productivity? **YES**
6. **Legislative Research Bureau.** The Massachusetts legislature is the only legislature in the nation without a professional, non-partisan research bureau. Would you support the creation of such an office? **YES**
7. **Expanding Access to Public Meetings.** Would you support updating Open Meeting Law so that people can choose to participate remotely in public meetings on a permanent basis and providing the necessary funds to municipalities to implement this? **YES**
8. **Same Day Registration.** Massachusetts lags behind other states in making voting accessible for all. Do you support eliminating Massachusetts's arbitrary and exclusionary 10-day voter registration cutoff and allowing voters to register or update their registration at the polls on Election Day and during the early voting period? **YES**
9. **Inactive Voter Lists.** Massachusetts is the *only* state in the country where voters are placed on the Inactive Voter List—one step before being removed from the voter rolls—if they fail to return our annual municipal census. Do you support removing this barrier to participation? **YES**
10. **Ranked Choice Voting.** Would you support legislation to allow cities and towns to adopt ranked choice voting in local elections? **YES**
11. **Universal Voting Rights.** Would you support restoring the franchise to incarcerated individuals serving time for felony convictions (Their right to vote was taken away by ballot twenty years ago)? **YES**

J. Sustainable Infrastructure and Environmental Protection

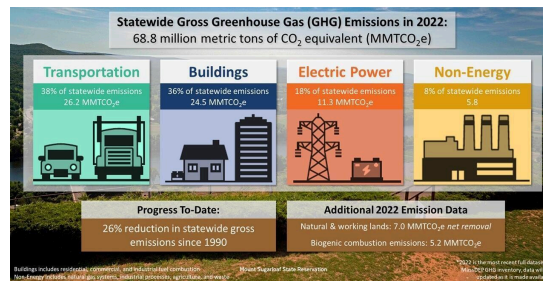
As a coastal state, Massachusetts will be hit particularly hard by climate change, but we are not responding with the necessary urgency. Massachusetts has ambitious and necessary greenhouse gas reduction goals, but we are [not on track](#) to meet them. Our state remains overly dependent on fossil fuels like oil and gas despite the pollution and myriad public health harms they produce and the ample [data](#) showing that we must leave fossil fuels in the ground. As we now face a federal government hostile to renewable and climate action, the responsibility lies with state government to take leadership in accelerating a green energy transition and ensuring that equity is at the forefront.

Public transit must play a role in decarbonizing our transportation system, as well as advancing complementary goals of equity and inclusion. However, Massachusetts politicians have lost their understanding of public transit as a public good that benefits all residents and businesses in Massachusetts, not just those who use it in their daily lives. The greatest evidence of this is their neglect of the MBTA: it would need [more than \\$24 billion](#) to bring infrastructure and equipment up to a state of good repair. Regional Transit Authorities that serve communities, including Gateway Cities across the state, face enormous capital needs as well.

Despite recent progress, Massachusetts is still overwhelmingly dependent on fossil fuels.



Transportation is currently the largest contributor to greenhouse gas emissions in MA.



1. Please explain your principles and proposals relative to sustainable infrastructure and environmental protection.

Climate change is one of the greatest challenges of our time, and Massachusetts must act with urgency, responsibility, and equity. Our approach must recognize that environmental justice and economic justice go hand in hand, because the communities most impacted by climate change are often the same communities already facing economic hardship.

My principles are rooted in sustainability, equity, and accountability. We must accelerate the transition away from fossil fuels and invest in clean, renewable energy while ensuring that working families are not burdened by the cost of this transition. At the same time, we must hold polluters accountable and prioritize solutions that protect public health and our environment.

Public transportation is a critical part of this strategy. We must invest in a modern, reliable, and accessible transit system that reduces emissions, connects communities, and expands economic opportunity. This includes fully funding and improving systems like the MBTA and supporting regional transit authorities that serve Gateway Cities.

We must also invest in resilient infrastructure, reduce energy costs for residents, and ensure that environmental policies are implemented in a way that is fair and inclusive.

2. Optional/As Applicable: Please indicate work you personally have done to protect the environment and expand access to public transportation.

Through my work as a City Councilor, I have supported initiatives that improve quality of life and promote healthier environments for families. I understand that environmental issues are directly connected to public health, housing, and economic stability—especially in working-class communities.

In Lawrence, through local government action, we allocated funding to make public bus transportation fare-free, helping residents access work, education, and essential services while also reducing barriers and supporting more sustainable transportation options.

I also continue to engage residents through community conversations, including my “Cafecito Fridays,” where concerns about transportation, environmental health, and neighborhood conditions are consistently raised and addressed.

3. **Fossil Fuel Infrastructure.** Do you oppose the expansion of fossil fuel infrastructure in the state? **YES**
4. **Make Polluters Pay.** Do you support holding the corporations who are most

responsible for causing global climate change financially accountable to pay for damages caused by climate driven extreme weather and the infrastructure improvements needed for resilience? **YES**

5. **Expanding Solar Coverage.** Would you support legislation to create permanent incentives for siting solar projects where they have the least environmental impact, i.e., on buildings and disturbed land? **YES**
6. **Banning Predatory Industry Practices.** Third-party electricity suppliers notoriously give confusing or misleading offers and often target low-income and older adults. Would you support banning third-party electricity suppliers that sell directly to residents? **YES**
7. **Utility Accountability.** Would you support legislation that restricts investor-owned utilities' profits, including but not limited their ability to recover lobbying, advertisement, trade association dues, and investor relations expenses on utility bills? **YES**
8. **Data Centers.** Data centers across Massachusetts and the country have been driving heavier energy and water usage, leading to higher costs for everyday customers. Would you support the following measures...?
 - a. Requiring primary-use data centers to pay for the cost of utility infrastructure upgrades, procure renewable back-up energy sources, and provide quarterly water and energy usage data? **YES**
 - b. Imposing a moratorium on new large-load data centers while a commission is convened to define appropriate community and environmental regulations? **YES**
 - c. Repealing tax exemptions for data centers? **YES**
9. **Plastic Bag Ban.:** Would you support a statewide ban on single-use plastic bags? **YES**
10. **Electrifying Public Transit.** In Massachusetts, 43 percent of GHG emissions in 2016 came from transportation infrastructure and vehicles. Tackling this will require a shift away from cars and toward public transit, as well as electrification of both. Would you support requiring the MBTA to operate an all-electric system by 2035? **YES**
11. **Free Public Transit.** Do you support making public transit in the Commonwealth fare-free? **YES**

III. ADDITIONAL COMMENTS

Limit answer to 150 words or fewer.

Use this space to add any other issues important to your vision for Massachusetts or any other matter you think progressive voters should know about your candidacy.

I am running to be a strong voice for working families, seniors, and small businesses in our community. My work as a union leader, childcare provider, and community organizer has shaped my commitment to fighting for affordable housing, accessible healthcare, quality education, and economic opportunity.

I have experienced many of these challenges firsthand, from the rising cost of health insurance to supporting families through food distributions and advocating for childcare access for thousands of children on waiting lists.

I believe the government must work for the people—not just the well-connected. I will continue to stand with workers, support unions, and advocate for policies that create stability, dignity, and opportunity for all.

I am ready to bring my lived experience and commitment to the State House and deliver results for our communities.