



**PROGRESSIVE MASSACHUSETTS**  
**2026 Legislative**  
ENDORSEMENT QUESTIONNAIRE

**Candidate:** Latoya Gayle

**Office Sought:** State Senator, First Suffolk

**Party:** Democrat

**Website:** [www.latoyaforsenate.com](http://www.latoyaforsenate.com)

**Social Media Handles:**

- **Facebook:** latoyaforsenate
- **Instagram:** latoyaforsenate
- **TikTok:** @latoya\_forsenate

## OVERVIEW

***We view our questionnaire as an educational resource, for both candidates and voters, on progressive approaches to the issues. It provides candidates the opportunity to address a number of important issues beyond the surface talking points and provides progressive voters an extremely valuable resource when making a decision.***

Our Questionnaire starts with an “About You” section and ends with an opportunity for you to include additional remarks beyond what we asked.

The bulk of our questionnaire is focused on the issues outlined in our [Progressive Platform](#), which also inform our [Legislative Agenda](#). We are interested in your overall philosophy as well as your views on specific policy and legislation.

Each section features charts or graphs (with links to sources) that illustrate one or more facets of the issue under discussion.

*Each section contains open-ended questions and YES/NO questions. **If the question is a YES/NO question, please answer either YES or NO.** If you leave a question blank, your answer will be recorded as a NO. Feel free to expand your answers, but **please keep answers < 150 words** and use your own words (we want human-generated answers, not AI-generated).*

### **Issue Subsections:**

- A. Revenue and Taxation
- B. Jobs and the Economy
- C. Education
- D. Health Care
- E. Housing
- F. Community Safety
- G. A Humane Immigration System
- H. A Welcoming Society
- I. Good Government and Strong Democracy
- J. Sustainable Infrastructure and Environmental Protection

## **I. About You & Your Governing Approach**

### **1. Why are you running for office? And what would be your top 3 priorities if elected?**

I'm running for State Senator because The 1st Suffolk is one of the most diverse districts in the Commonwealth, and its residents are navigating a cost-of-living crisis that touches every corner of their lives, including housing, childcare, transportation, energy, and food. I will focus on three interconnected priorities:

Affordability and Housing - People should not be forced out of the communities they love which is why we need bold action to increase housing, protect renters, and expand pathways to ownership.

Energy and Environmental Justice - Families should not have to choose between keeping the lights on and paying for groceries. We need accountability for utility companies, and faster movement toward clean energy because what's good for the earth is good for our bodies, cleaner air, cleaner water, a cooler planet.

Education and Childcare - Education and childcare are infrastructure that support children, parents, and our economy. We must treat them like the public good that they are and invest in them accordingly.

### **2. What prepares you to serve in this capacity?**

Both my lived and professional experiences prepare me to serve. I have spent the last two decades in advocacy and I entered that space because I had to; I was a mother who was just trying to figure out how to make sure my children got everything they needed. What I found was that the biggest roadblocks were not individuals; they were systems and policies that were created to benefit some and not all. I have also learned over these many years how to navigate these systems and build relationships with other folks who are fighting to create fairer and more just systems and policies. I believe we can build systems and create policies that work for everyday people. I also believe that it takes pressure and support from advocates to guide and encourage elected officials to act with urgency. I'm ready to be a partner to the residents of the 1st Suffolk and fight for our future together.

### **3. Do you consider yourself progressive, and if so, how would you define "progressive"?**

Yes, I consider myself progressive. I would define progressive as someone who is working and fighting to create policy solutions that work for the good of people and undo harm. I believe that it requires courage and honesty about where we are and where we are trying to go. That means acknowledging and dismantling racist policy, classist and anti-poor policy, sexist policy, homophobic policy and fighting to create policy that is just and inclusive.

**4. What do you view as the biggest obstacles to passing progressive policy at the state level, and how do you plan to overcome these obstacles?**

I believe the biggest obstacle is the lack of political will and corporate and special interest donors having too much influence. I plan on working and organizing with my constituents and advocates to apply external pressure. I also plan on developing relationships with my colleagues, organizing on the inside and bringing the voices of my constituents into the State House.

**5. What is one policy pioneered by another state (or at the municipal level) that you would like to see Massachusetts adopt?**

I would love to see Massachusetts adopt universal childcare. In 2025, New Mexico became the first state in the United States to offer universal childcare. I've read that the families who enroll in the program can save around \$12,000 annually.

**6. Provide an example of a time that you built a broad coalition to achieve a desired outcome.**

The broadest coalition that I've built is March Like a Mother. I formed this coalition in the wake of George Floyd being murdered. I was able to bring diverse mothers together around an issue that was important to all of us but impacted some of us more directly. I was also able to shine a light and amplify the work and advocacy of others on issues that impact the Black community.

**7. (For incumbents only) Each year, Progressive Massachusetts compiles a scorecard of key roll call votes, available at <https://scorecard.progressivemass.com>. Please use this space to explain any discrepancies between your votes and the progressive position.**

**8. (For challengers or candidates in open races only) How do you see yourself as similar to or different from the current holder of the office you are running for?**

It wasn't until I began my campaign that I met my senator. In every neighborhood in the district, residents say they are seeing Senator Nick Collins for the first time because I'm running against him. I believe creating policies that benefit the wealthiest residents and corporate interests is a choice, and I'm running because I think we can make a different choice.

There are areas where I agree with Senator Collins but many where we differ. I've spent my time here in Boston and my career working with and fighting for the community because I come from the community. I don't come from a lineage of people from the State House or a string of political insiders. Like most people, I consider myself to be a political outsider looking to bring change to the State House.

Also, I believe that the City of Boston and its residents should have the right to self determination. Boston's home rule petition to temporarily shift a higher share of property tax from residential to commercial property is going against the will of residents. While the Trump Administration is targeting our communities and raising costs, we need to work together to provide relief and support for our residents. People are happy that they have a choice in this election.

## II. The Issues

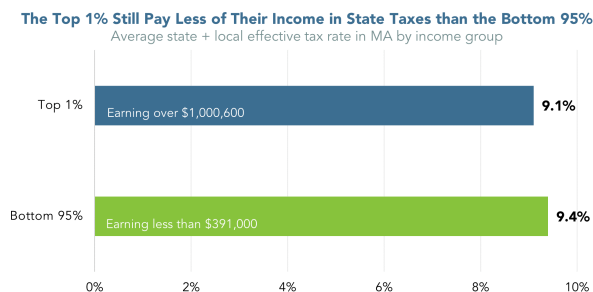
### A. Revenue and Taxation

Although Massachusetts has developed the moniker of “Taxachusetts,” our history shows the opposite. Between 1977 and 2016, Massachusetts [reduced state taxes](#) by more than all but two other states. Because of income tax cuts enacted between 1998 and 2002, Massachusetts lost over \$4 billion in tax revenue *each year*—\$4 billion not invested in our roads, bridges, schools, parks, and services. Such cuts to the state income tax, combined with [low corporate income taxes compared to other states](#), have meant increasing reliance on regressive taxes and fees and curtailing our ability to invest in vital infrastructure. It also restricts legislators’ ability—and willingness—to pass new and visionary legislation, as there is a continual shortage of funds for existing priorities.

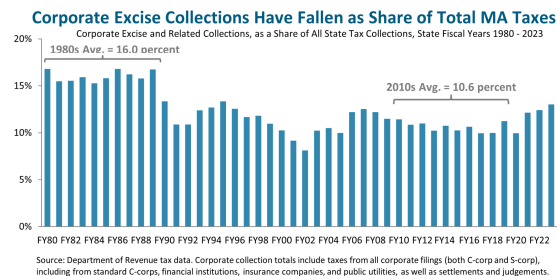
Although we saw a welcome shift when MA voters passed the Fair Share Amendment and added more progressivity to our tax code, the Legislature in 2023 voted to give tax cuts to multi-million-dollar estates, large corporations, and day traders, blunting the full impact of the win. We cannot tax-cut our way into competitiveness; MA strengthens our competitiveness when we invest in our people and infrastructure.

Moreover, Massachusetts faces the threat of steep federal budget cuts, but given that we have the same GDP as the country of Sweden, we have the ability to raise the revenue to meet needs if we have the will to do so.

#### Even with the recently passed Fair Share Amendment, the top 1% still pay a lower effective tax rate than the bottom 95%.



#### Even as corporations are securing an increasing share of total income, their share of taxes has been falling.



1. What principles do you bring to considerations of state revenue and tax policy? How should we raise more revenue to adequately fund our communities for the future?

The people, companies, and institutions who have the greatest capacity to contribute to our shared prosperity should. I will look for additional revenue streams to ensure the State can supplement federal cuts with funding for vital programs. For immediate attention, we need to respond to the Trump “One Big Beautiful Bill Act”, which creates costly, regressive giveaways to the richest corporations that are automatically applied to Massachusetts. I support decoupling the Commonwealth’s tax code from the federal government so we don’t lose vital revenue.

2. Optional/As Applicable: Please indicate work you personally have done to advance your principles on revenue and taxation (legislation, community work, published writings, etc.).
3. **Corporate Tax Breaks.** Corporate tax breaks cost Massachusetts [more than \\$1 billion in foregone revenue](#) each year. Which of the following steps would you support?
  - a. Repealing any tax break that does not provide the intended benefits in a cost-effective manner? **YES**
  - b. Establishing sunset dates for all tax breaks to require periodic review? **YES**
  - c. Ending the current sales tax exemptions for aircraft and aircraft parts, which costs the Commonwealth approximately [\\$30 million](#) each year? **YES**
4. **Corporate Disclosure.** Would you support legislation to make publicly accessible the reports that are already filed annually by publicly traded corporations, detailing their sales, profits, taxable income, and taxes paid? **YES**
5. **Corporate Fair Share.** Large multinational corporations like Amazon and Walmart hide significant profits offshore in order to avoid paying taxes here in Massachusetts and in other states. Would you support legislation to increase the amount of offshored corporate income subject to MA’s corporate income tax to 50%, the maximum allowable amount and the amount taxed by most of our neighboring states? **YES**
6. **Taxing Extreme Wealth.** Would you support the establishment of a Massachusetts wealth tax, which applies only to extremely rich taxpayers (with a threshold of at least \$100 million) and taxes them on a percentage (e.g., 1% annually) of their wealth above the threshold? **YES**
7. **Digital Ads Tax.** Would you support imposing new tax targeted at large companies that amass our personal data, either through a data-mining excise tax or a tax on digital advertising, as introduced or passed in states like New York and Washington State? **YES**
8. **Preventing Regressive Tax Cuts.** Massachusetts needs to raise new revenue to advance a progressive agenda. At the same time, we also need to fight regressive tax

cuts that weaken our public services.

- a. MA stands to lose hundreds of millions of dollars in revenue each year due to corporate tax cuts in Trump's Big Ugly Bill that will automatically enter the MA tax code. Do you support permanently decoupling the state tax code from these federal changes? **YES**
  - b. Will you oppose the corporate lobby's ballot question to reduce the state income tax, a measure which would cost the state \$5 billion a year? **YES**
  - c. Will you oppose the corporate lobby's ballot question to reform the state tax collection cap law (62F) in order to make the state more frequently hit the cap and lose out on critical investments? **YES**
9. **Rainy Day Fund.** Massachusetts will see significant budget cuts next year due to Trump's Big Ugly Bill. Would you support using 15% of the rainy day fund in order to prevent cuts? **YES**
10. **PILOT Reform.** Do you support enabling cities and towns to require large tax-exempt not-for-profit institutions (i.e., with property valued at or above \$15M) to make payments in lieu of taxes to the municipality equal to 25 percent of the amount that would be paid if they were not exempt? **YES**
11. **Public Bank.** Would you support the creation of a Massachusetts public bank chartered to provide cost-effective financing for small businesses and municipalities, land trusts and cooperatives, and climate adaptation/remediation projects? **YES**

## B. Jobs and the Economy

Massachusetts ranks as one of the top ten [most unequal states](#), as the gains from economic growth have disproportionately benefited the already well-off. Compounding this, we are one of the most expensive states in the country for [health care](#), [housing](#), and [child care](#), all of which strain wages. A strong economy depends on strong wages, as workers spend and help local economies thrive. Although Massachusetts now has a \$15 minimum wage, a living wage for a single adult without children is now [\\$27.89 per hour](#).

In recent decades, unions have been under attack nationally. However, unions played—and continue to play—a pivotal role in creating a strong middle class. With weaker unions (or no unions at all) come weaker social and economic rights and an imbalanced economy. Strengthening the rights and power of labor is essential to an economy that works for all.

### Productivity has grown significantly since the 1970s, but it is not being reflected in higher wages.



<https://archive.massbudget.org/reports/swma/>

### The minimum wage in Massachusetts is well below a living wage. ([Source](#))

	1 Adult			2 adults (both working)		
	0 children	1 child	2 children	0 children	1 child	2 children
<b>Living Wage</b>	\$30.58	\$58.26	\$76.55	\$19.63	\$31.61	\$39.61
<b>Poverty Wage</b>	\$7.67	\$10.40	\$13.13	\$5.20	\$6.57	\$7.93
<b>Minimum Wage</b>	\$15.00	\$15.00	\$15.00	\$15.00	\$15.00	\$15.00

1. Share your principles and proposals regarding creating good-paying jobs for all and reducing inequality in the Commonwealth.

The inequity in economic growth in the Commonwealth needs to be addressed. Boston is home to some of the highest rated schools and hospitals in the United States, and there are so many who cannot access them. Creating good paying jobs across the state start with a \$20 minimum wage indexed to inflation, free higher education, expanding state funded upskilling and non-college pathways including apprenticeship programs, and supporting workers' right to collectively bargain. I also believe Massachusetts can create hundreds of good paying jobs by fast tracking the state transition to renewable energy and can ensure educators, especially early educators and childcare providers, are paid a livable wage.

2. Optional/As Applicable: Please indicate work you personally have done to advance your principles on creating good-paying jobs for all and reducing inequality (legislation, community work, published writings, etc.).

In my profession I advocate for increasing the pay of early educators. I organize educators and families around legislation to support early educators and working families.

3. **Livable Wages.** Although Massachusetts now has a \$15 minimum wage, that is still not a living wage in much of Massachusetts, and \$15 has lost a lot of value due to high inflation. Do you support the following steps...?
  - a. Raising the minimum wage to \$20 per hour? **YES**
  - b. Eliminating subminimum wages? **YES**
  - c. Ensuring that the minimum wage law applies to municipal workers? **YES**
  - d. Indexing the minimum wage to inflation? **YES**
4. **Wage Theft.** Do you support holding businesses responsible for the wage violations of their subcontractors when the work they do is substantially connected to the company's operations? **YES**
5. **Paid Leave for All Workers.** In 2018, MA passed the strongest paid family and medical leave law in the country. However, the law did not include municipal workers or graduate student workers. Would you support extending the law to make sure that all workers have access to these vital benefits? **YES**
6. **Paid Time Off.** The US is the only advanced industrial country where workers are not guaranteed paid time off. Would you support legislation to require employers to offer full-time employees at least two weeks of paid time off each year, which they can use for any reason with no loss of pay? **YES**
7. **Right to Strike.** Would you support legislation to legalize the right to strike for public employees (with the exception of public safety personnel) after six months of failed negotiations with their employer? **YES**
8. **State House Unionization.** Would you support legislation to extend collective bargaining rights to State House staff? **YES**

## C. Education

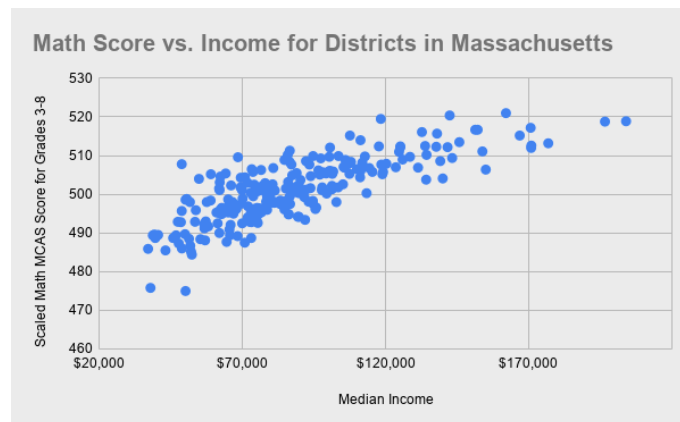
Massachusetts parents and caregivers face the [highest child care and early education costs of any state in the US](#). The average annual cost of infant care in Massachusetts is more than half of what a full-time minimum wage worker earns in a year. These costs are prohibitively expensive for low- and middle-income families, who are forced to choose between making ends meet and saving for the future on one hand, or affording child care on the other.

Public education plays a fundamental role in democracy, cultivating informed, well-rounded community members and providing the knowledge and skills needed for economic mobility and opportunity. Although our public education system gets high marks overall, it remains one of the [most unequal](#) in the country, with significant opportunity and resource divides based on income and race. In 2019, Massachusetts passed the Student Opportunity Act to update the formula for state aid to public school districts and correct these inequities, but schools have faced added strains due to the pandemic and inflation.

Public education has also been under attack by powerful corporate interests seeking to undermine public schools, teachers, and unions. These groups invest millions of dollars to promote the expansion of privately run charter schools, which siphon money from our public K-12 districts while largely excluding students with the greatest needs. Costly, mandated standardized test results are used to label schools as “failing” and justify these privatization schemes. State receiverships in struggling school districts take power away from communities and often facilitate privatization schemes that could never achieve democratic support.

At the same time, our understanding of education has also broadened. No longer do we only talk about K-12 education; rather, most of the [fastest-growing occupations](#) require education beyond a high school diploma. Massachusetts has been disinvesting from public higher education for the past two decades, leading to higher tuition costs and putting students at risk of long-term debt (if they are even still able to attend). Our public colleges and opportunities are an economic engine for local economies as well as a pathway to economic opportunity, and when that opportunity is cut off for students, we all lose out.

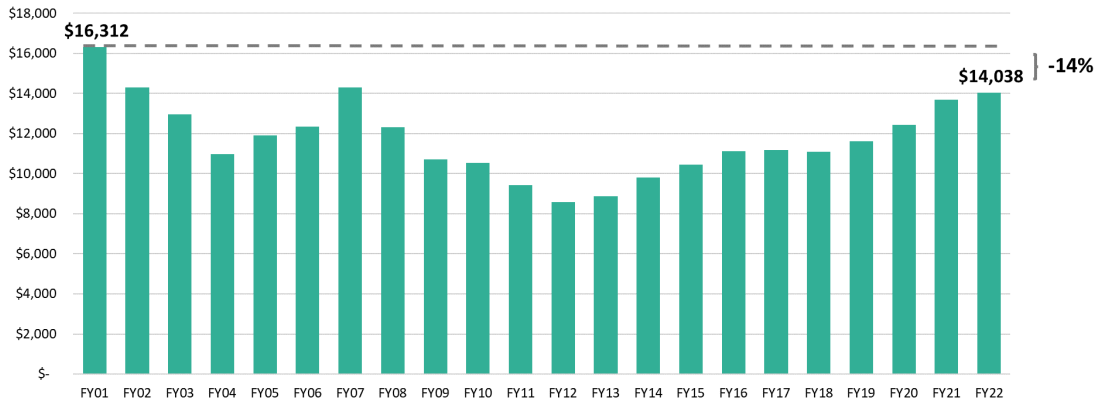
**Standardized test scores have a very strong correlation with the income of the school district. ([Source](#))**



**Massachusetts has been disinvesting from higher education and shifting the cost burden onto students. (Source)**

**Higher Education Funding Per Student Cut by 14 Percent Since FY 2001**

Massachusetts higher education spending, per resident student, FY 2001-FY2022 adjusted for inflation (2024\$)



1. Please share your principles and proposals regarding public education.

Boston is the oldest public school system in America, and it has its share of aging facilities. However, Massachusetts’s system for funding school building upgrades too often privileges building projects in wealthy suburbs instead of cities like Boston. I will look at the MSBA Core Program and make sure it follows the funding formula it was created to implement by covering up to 80% of construction costs for the lowest-income communities and does not disproportionately benefit wealthy districts that can afford new construction.

Also, the Student Opportunity Act was a critical step forward for public education in the Commonwealth. It has been over half a decade since it was passed, and it is time to review its implementation to analyze whether it fully meets the needs of Boston students. Boston faces unique challenges that the current funding formula does not adequately account for like the high cost of living, concentrated student need, aging school facilities, and the responsibility of educating large numbers of English learners, students with disabilities, and students experiencing housing instability.

Finally, education and childcare are infrastructure that supports our children, their parents, and our economy. We must treat early education and childcare as a public good and invest in making it affordable for families while ensuring providers are paid a living wage.

2. Optional/As Applicable: Please indicate work you personally have done to advance your principles on public education.

I was the Executive Director of Boston School Finder helping families navigate school enrollment by building real relationships with parents and school leaders. I have also spent much of my career helping families and early educators stay informed about changes and threats from the federal government and identifying the tools and rules we have to fight back. This includes connecting families and educators to resources when the Trump Administration stops or reduces support, as well as collaborating with local organizations to make sure we do everything we can to fill any gaps.

3. **Affordable Child Care.** Would you support legislation to make child care free for low-income families and ensure that no family has to pay more than 7% of their income on child care? **YES**
4. **Universal Pre-K.** Would you support creating universal, free Pre-K, accessible to any resident of Massachusetts, integrated into the public school system? **YES**
5. **Charter Schools.** Charter schools siphon millions of dollars for public education away from public schools and create a two-track system of public schools described by the national NAACP as “separate and unequal.” Do you support keeping the cap on charter schools? **YES**
6. **K-12 Education Funding.** Our public schools are losing out on the full benefits of increased funding due to a glitch in how the Chapter 70 formula treats inflation. The combination of several years of high inflation and an inflation cap in education funding calculations has locked in lower levels of aid to districts. Do you support fixing this gap and ensuring that our school districts get the funding they deserve? **YES**
7. **Receivership.** The Lawrence Public Schools and Southbridge Public Schools are currently under state receivership, with a state-appointed receiver assuming the powers of a superintendent or democratically elected school committee. The state takeover has not produced sustainable gains and has at times been characterized by [chronic mismanagement](#). Would you support ending the practice of state receivership and returning power to democratically elected school committees? **YES**
8. **Guaranteed Education for Incarcerated Youth.** Would you support legislation to mandate that at least 6 hours of credited daily education is available for all incarcerated, school-aged youth, including those with IEPs? **YES**
9. **Comprehensive Sex Education.** Do you support requiring public schools to provide age-appropriate, medically accurate information that is inclusive of all sexual orientations and gender identities and includes topics such as consent and the effective use of contraception? **YES**
10. **Inclusive Curricula.** Our educational curricula must speak to students’ lived experiences and recognize and celebrate the diversity of our Commonwealth.

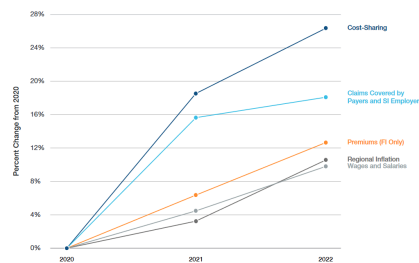
- a. **Racially Inclusive Curricula.** Would you support legislation to ensure that instruction in K-12 education shall include the teaching of accurate histories, writings, and contributions of racial and ethnic groups that have been historically underrepresented or marginalized? **YES**
  - b. **LGBTQ-Inclusive Curricula.** Would you support legislation to ensure that Massachusetts public schools include sufficient instruction on the histories, roles, and contributions of LGBTQ individuals in the history of this country and the Commonwealth? **YES**
11. **Redistributing Institutional Wealth.** Would you support legislation that would levy a small excise tax on private college and university endowments above \$1B to fund free public higher education for all in-state students? **YES**
12. **Debt-Free Higher Ed.** Would you support legislation to guarantee Massachusetts residents can graduate Massachusetts' public colleges and trade schools completely free of student loan debt? **YES**
13. **Supporting Public Higher Ed Faculty.** Would you support ensuring that adjunct faculty and part-time staff are eligible for state health care and retirement benefits? **YES**
14. **Student Protest & Academic Freedom.** Will you support the unequivocal rights of students and faculty to peaceful protest and freedom of expression in Massachusetts' public and private institutions of higher education? **YES**

## D. Health Care

Massachusetts has led the way in providing near universal health insurance coverage, with [97% of the state](#) having health insurance. But until that is 100%, we haven't reached truly universal coverage or tackled critical barriers to accessing care. Disparities in insurance coverage and health care access continue to exist along income, racial, and education lines. Premiums continue to rise, and high deductibles mean that many do not get the health care they need—or suffer from long-lasting debt if they do. We still spend an oversized portion of public and private money on health care, but without necessarily achieving better health outcomes.

### Cost-sharing has risen faster than claims paid by employers, and premiums are rising faster than inflation.

Private Commercial Insurance Affordability in Context, 2020-2022

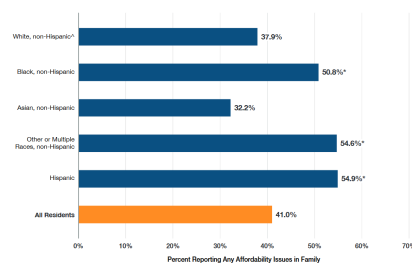


Member cost-sharing and premiums increased at a faster rate than regional inflation and wages and salaries from 2020 to 2022, driven in part by fluctuations in utilization during this time period.

Source: Data from the Massachusetts Health Insurance Survey. Claims amounts were adjusted for pharmacy inflation reported by payers. Reported cost-sharing, premiums, and claims amounts have not been adjusted to account for health care costs, which may vary by plan. Claims amounts are published from 2020 to 2022, with 2020 data available as Q1, 2021 data as Q1-Q2, and 2022 data as Q1-Q2. Data for wages and salaries is from the BLS. See technical appendix.

### Almost half of Massachusetts residents are facing affordability issues with accessing health care.

Any Affordability Issues Among Residents and their Families, Overall and by Race/Ethnicity, 2021



Over half of Black and Hispanic residents reported experiencing health care affordability issues in the past 12 months.

Source: 2021 Massachusetts Health Insurance Survey.  
 \*Reference group: All residents reporting any of the following issues: problems paying family medical bills in past 12 months, family medical bills at the time of survey, spending a high share of family income in past 12 months on out-of-pocket health care expenses, and unmet family health care needs due to the cost of care in past 12 months.  
 \*\*Reference group.  
 \*\*\*Difference from reference group is statistically significant at the 5% level.

1. Please share your values, principles, and proposals regarding health care access and equity.

I believe that healthcare is a right and that all people should have access to free healthcare. I support the idea of single-payer health insurance in Massachusetts and requiring employers to contribute to funding it. I also believe hospitals and their affiliated providers should be required by law to accept this insurance.

2. Optional/As Applicable: Please indicate work you personally have done to advance your principles on health care (legislation, community work, published writings, etc.).
3. **Single Payer.** Would you support legislation to enact a single payer health care system in Massachusetts, which would guarantee health insurance as a right? **YES**
4. **Medical Debt.** States like Connecticut and Arizona have taken action, in partnership with RIP Medical Debt, to eliminate medical debt for hundreds of thousands of working-class residents. Would you advocate for similar action in Massachusetts? **YES**
5. **Full Spectrum Pregnancy Care.** Would you support requiring health insurance plans to cover all pregnancy care (including prenatal care, childbirth, and postpartum care), without any kind of cost-sharing, building on the recent mandate to require coverage for abortion and abortion-related care? **YES**
6. **Abortion Access - 1.** Young people under sixteen seeking an abortion must obtain parental consent or judicial authorization. While most young people involve their parents, many cannot, causing delays to timely medical care and counseling. Scared teens may also turn to dangerous measures: going out of state or risking their lives and health with illegal or self-induced abortion. Would you support repealing this restriction on young people's access to abortion? **YES**
7. **Abortion Access - 2.** Despite recent overdue updates to abortion care protections in Massachusetts, dozens of patients have to travel out of state every year for necessary care. Would you support expanding abortion access after 24 weeks of pregnancy when in the best professional judgement of a licensed physician? **YES**
8. **Anti-Abortion Centers.** In Massachusetts, anti-abortion centers (also known as crisis pregnancy centers), which have a politically-motivated agenda to dissuade and delay patients from accessing abortion care, outnumber abortion clinics by more than 2 to 1. These centers scare and shame pregnant people considering abortion care and often oppose birth control and emergency contraception. Would you commit to opposing any Massachusetts government support and funding for such centers? **YES**
9. **Overdose Prevention Centers.** An essential part of addressing the opioid crisis, overdose prevention centers allow medical professionals to respond to overdoses and engage participants in medical and behavioral health services. Would you support the legalization of overdose prevention centers? **YES**
10. **Vaccination.** Would you support legislation to eliminate non-medical exemptions to the routine vaccines for children required for school entry, as our neighbors in Maine, Connecticut, and New York have already done? **YES**

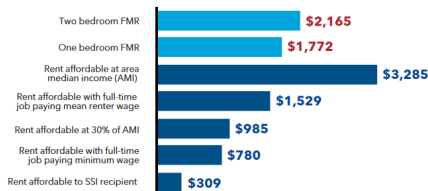
## E. Housing

Massachusetts has a lot to offer, but that does little if people can't afford to live here. The [US News & World Report's annual state rankings](#) put Massachusetts at #40 in housing affordability (and #47 in cost of living). To rent the average 2-bedroom apartment in Massachusetts requires an income equal to [\\$41.64 per hour](#), more than twice the minimum wage. A minimum-wage worker in Massachusetts would need to [work 91 hours each week](#) to afford a modest 1-bedroom rental home at fair market rent.

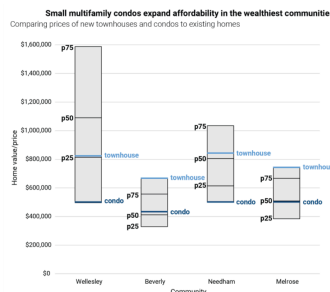
Home ownership has become increasingly out of reach, as the state's median home price is [approximately \\$600,000](#). In more than 20 communities, the median home price recently [passed \\$1 million](#). Meanwhile, we have some of the [most restrictive zoning laws](#) in the country, making it difficult to build more housing to meet the needs of a growing population.

The high cost of housing has led to displacement, and in a growing number of municipalities, the local workforce can no longer afford to live there.

### With rental increases far outpacing wage increases, many are left with housing instability.



### The overreliance of single-family housing in suburban development, as opposed to denser or multi-family housing, makes communities unaffordable.



Source: Existing home values taken from the Census Bureau's American Community Survey 2014-2018. Prices for new townhouses and condos from Crump, Mattis, Schultz and Schuster (2020).

1. Please share your principles and proposals regarding affordable housing and housing affordability in the Commonwealth.

I believe everyone deserves a safe, stable, and affordable place to call home. Housing is a human right, yet too many families in Massachusetts, especially in Boston, are being pushed out by rising rents and home prices.

We need to take on corporate landlords, private equity, and speculative investors who are driving up costs. I support policies that limit bulk purchasing of housing and prioritize homes for people, not profit. I also support tenant protections, including rent stabilization, to prevent displacement and keep families in their communities.

At the same time, we must create real pathways to homeownership for working-class families by expanding first-time homebuyer programs and increasing down payment assistance, especially for communities historically excluded from the housing market.

We also need to raise income limits for housing assistance to reflect the true cost of living and invest in deeply affordable and social housing so families can stay and thrive.

2. Optional/As Applicable: Please indicate work you personally have done to advance your principles on housing (legislation, community work, published writings, etc.).

3. **Emergency Shelter.** How would you evaluate Governor Healey's response to the emergency shelter crisis?

I didn't agree with her decision to limit families' time in shelters when they had no place to go.

4. **Welcoming New Neighbors.** Would you support efforts to locate both long-term housing and short-term shelter in your district? **YES**

5. **Everyone Needs ID.** Would you support easing access to Mass IDs for people experiencing homelessness by waiving the \$25 fee for IDs and easing the verification requirements for youth and adults who are unhoused and seeking IDs? **YES**

6. **Local Option Real Estate Transfer Fee.** Would you support enabling all cities and towns the flexibility to design and pass real estate transfer fees that will be effective in their municipalities to raise money for affordable housing production? **YES**

7. **Green and Affordable Communities.** Would you support doubling the current Deeds Excise Tax (from \$4.56 per \$1,000 to \$9.12 per \$1,000), upon the sale of real property in Massachusetts, to create a new funding stream to be split evenly between affordable housing and climate resiliency? **YES**

8. **Rent Control.** Massachusetts residents face some of the highest and fastest-growing rents in the country.

- a. Would you support lifting the statewide ban on rent control and enabling cities and towns to pass rent stabilization ordinances to limit annual rent increases? **YES**
  - b. Do you support the proposed 2026 statewide ballot initiative to limit annual rent increases? **YES**
9. **Tenant Opportunity to Purchase.** Would you support providing tenants of small, medium, and large multifamily properties with the right of first refusal when the owner plans to put a building on the market? **YES**
10. **Right to Counsel.** Would you support legislation to provide legal representation for low-income tenants in eviction proceedings? **YES**
11. **HDIP Reform.** The Housing Development Incentive Program (HDIP) is a multimillion-dollar annual state tax credit program subsidizing market-rate housing in Gateway Cities. Would you support reforming this program to support both market-rate and affordable housing development? **YES**
12. **Social Housing.** Social housing is publicly financed, mixed-income housing, owned by a local or regional housing authority. Would you support efforts to increase state funding for social housing initiatives? **YES**
13. **Zoning Reform.** Would you support zoning reforms to increase housing production and create more affordable and environmentally sustainable communities such as...
- a. Requiring multi-family zoning and removing costly parking mandates around public transportation and city/town centers statewide? **YES**
  - b. Enabling communities to adopt inclusionary zoning ordinances (i.e., requirements that a certain percentage of new units in a development be affordable) by simple majority vote? **YES**
14. **MBTA Communities Law Enforcement.** Would you support measures to strengthen the law with stricter consequences for municipalities that refuse to comply, including voiding non-compliant zoning? **YES**

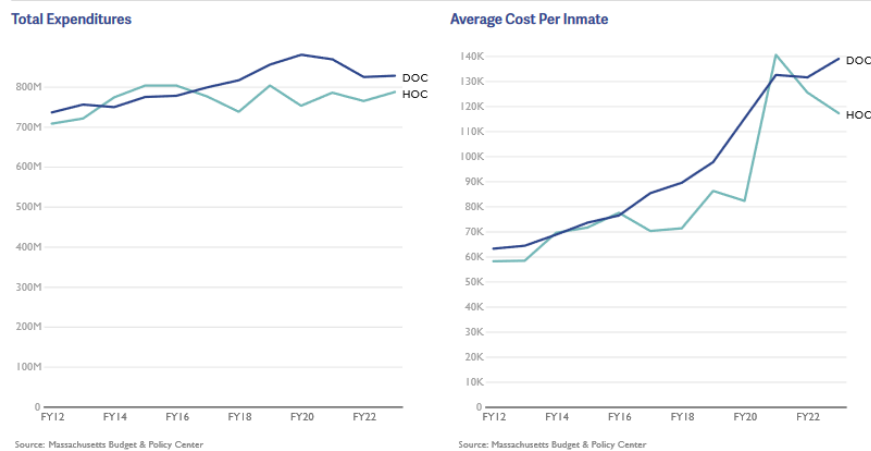
## F. Community Safety

Mass incarceration in Massachusetts has proven socially and economically destructive, breaking apart communities across the state. Even though Massachusetts has one of the lowest incarceration rates of the United States, we have some of the [starkest racial disparities in incarceration](#), a result of overpolicing and systemic biases.

Although incarceration rates in Massachusetts have gone down over the past few years as a result of policies from the 2018 criminal justice reform omnibus bills, spending on the Department of Correction has [risen](#). The average cost per year to house an individual in the Massachusetts Department of Corrections is [more than](#) \$100,000, money that could be better reinvested into the communities that have suffered from decades of misguided and racially discriminatory “tough on crime” policies. To achieve “justice for all,” we need a judicial system that does not disproportionately target communities of color and the poor and that does not criminalize public health issues such as addiction.

**The correctional population in Massachusetts has declined, yet the state continues to increase the Department of Corrections budget.**

**Figure 14: Total expenditures for correctional institutions and average cost per inmate, inflation-adjusted to 2023 dollars**



**Although MA's incarceration rate is lower than the national rate, racial disparities are even more stark. ([Source](#))**

Statistics (2022)	MA	US Total
Imprisonment rate (per 100K residents)	94	355
Black : White Disparity	7 : 1	4.8 : 1
Latinx : White Disparity	4 : 1	1.3 : 1

1. Please share your principles and proposals regarding community safety, police accountability, and criminal legal reform.

I believe real community safety starts with making sure people have what they need to live with stability and dignity. When families have housing, good jobs, quality education, and access to healthcare, we reduce harm at its root. If we're serious about safety, we have to be serious about reducing poverty and inequality.

We also need real police accountability. Officers should be held to the same standards as everyone else when they break the law. I support independent civilian oversight and more transparency. At the same time, we can't rely only on policing and incarceration to keep people safe. We need to invest more in mental health response, violence prevention, and substance use services so people get the help they need before things escalate. We also need to support people coming home so they can rebuild their lives. Real safety means investing in people, not just enforcement.

2. Optional/As Applicable: Please indicate work you personally have done to advance your principles on community safety, police accountability, and criminal legal reform (legislation, community work, published writings, etc.).

I have consistently used my voice and platform to advocate for community safety and accountability. I helped lead March Like a Mother, organizing parents and families to speak out against police violence and demand change. That work was rooted in the belief that families, especially mothers, should have a voice in shaping what safety looks like in our communities.

I have also spoken out about the need for police reform and accountability, calling for systems that hold officers responsible when they cause harm and that rebuild trust between communities and law enforcement.

In my broader work, I focus on addressing the root causes of harm by advocating for investments in families, education, and community-based supports.

3. **Police Accountability.** The 2020 police accountability law passed by the Massachusetts Legislature contained a number of steps forward, but important measures were left out. Would you support legislation to do the following?
  - a. Eliminating qualified immunity for state and local police and correctional officers so that individuals whose constitutional rights are violated can have their fair day in court? **YES**
  - b. Enacting the recommendations from the special legislative commission on facial recognition, to implement privacy, civil rights, and due process protections to govern police use of the technology? **YES**
4. **Sentencing Reform.** The 2018 criminal justice reform bill was an important first step in reducing mass incarceration. However, in our "liberal" state, incarceration rates remain

much higher than they are in other countries, and sentencing laws can be even more punitive than those in states viewed as conservative. Do you support the following reforms?

- a. Eliminating mandatory minimums for all drug offenses? **YES**
  - b. Raising the age of criminal majority from 18 to 21, in line with research that shows that young offenders served by a juvenile system are much less likely to reoffend and more likely to successfully transition to adulthood? **YES**
  - c. Decriminalizing consensual sexual activity between adolescents, by creating an exception to the statutory rape law for youth close in age? Massachusetts is one of only three states that criminalizes consensual sexual activity between two adolescents. **YES**
  - d. Eliminating the sentence of life without parole, which is costly and has been shown to be racist in its application? **YES**
  - e. Restructuring joint venture sentencing such that accomplices to murder are sentenced proportionally to their level of responsibility for a death rather than a minimum sentence of life without parole? **YES**
5. **DOC Oversight -- I.** Would you support legislation to establish an inspector general for the Department of Correction? **YES**
  6. **DOC Oversight -- II.** Massachusetts legislators have the statutory right to make unannounced visits to correctional facilities run by the state. Would you commit to visiting, whether announced or scheduled, Department of Corrections facilities as a state legislator? **YES**
  7. **Solitary Confinement.** Would you support legislation to create universal access to productive out of cell time with programming, education and vocational training for all incarcerated people? **YES**
  8. **Prison Moratorium.** Would you support a moratorium on the construction of new prisons and jails in the Commonwealth? **YES**
  9. **Keeping Families Connected.** Would you support eliminating the arbitrary, unnecessary restrictions on visitation rights in prisons and jails? **YES**
  10. **Clean Slate.** The Massachusetts court system maintains a database of name-based court arraignment records, referred to as Massachusetts Criminal Offender Record Information (CORI). Many people are trapped in poverty and shut out of jobs and housing because of the difficult process to expunge their records, even for cases that did not end in a conviction or occurred when they were teenagers. Would you support...
    - a. Requiring the Commissioner of Probation to automatically seal criminal and juvenile records after the applicable waiting periods without requiring individuals to file a petition to do so? **YES**

- b. Requiring the immediate sealing of a criminal offense if the charge did not end in a conviction? **YES**
  
- 11. **Reentry.** The Department of Correction's stated mission is to "prepare [individuals in custody] for safe and successful reentry into the community," but regularly fails to live up to that. Do you support the following measures to strengthen reentry efforts...
  - a. Mandating that correctional facilities in Massachusetts assist incarcerated individuals in acquiring valid Massachusetts identification cards before their release? **YES**
  
  - b. Increasing funding for reentry-related programming? **YES**
  
- 12. **Gun Violence Prevention.** Will you vote YES to protect the 2024 gun safety bill on the ballot in November 2026? **YES**

## G. A Humane Immigration System

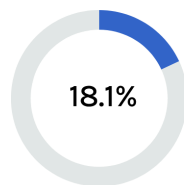
Immigrants make up [18%](#) of Massachusetts's population; however, demagoguery against, or indifference to, immigrant populations has historically been a mainstay of Massachusetts politics. We too often see both Democrats and Republicans fear-monger about immigration and the border, championing policies that criminalize rather than welcome.

Since Trump took office in January, ICE has escalated its activities in Massachusetts, terrorizing immigrant communities. ICE arrests have gone up by more than [250%](#) since last year, driven by their targeting of individuals without criminal records. ICE has brutalized children, torn families apart, and engaged in rampant racial profiling.

Our immigrant communities are helping to keep our communities healthy, they are innovating and educating, and they are helping us build a better future for all of us.

**Immigrants are a major part of MA's economic prosperity. ([Source](#))**

### OVERVIEW



Immigrant share of population

**1,270,500**

Number of immigrant residents

**\$51.8B**

Immigrant spending power

**\$20.4B**

Immigrant tax contributions

**2023**

Data year

1. Please share your principles and proposals regarding welcoming and protecting our immigrant communities.

Our immigrant communities are vital to keeping our neighborhoods thriving and strong, and we need to protect them from attacks by the Trump Administration. I oppose any state or local collaboration with federal immigration enforcement agencies, including ICE, and will advocate to ensure that immigration status never determines whether a child can attend school, access health care, or receive public services. If elected, I will advocate for the Commonwealth to double down on state support for the Massachusetts Access to Counsel initiative (MACI) and other services that provide legal defense for those who are facing the risk of deportation.

2. Optional/As Applicable: Please indicate work you personally have done to advance your principles on welcoming and protecting our immigrant communities (legislation, community work, published writings, etc.).

As a volunteer with LUCE, I work on the ground to protect immigrant neighbors through grassroots organizing, information sharing and mutual support. I have also stood in solidarity at union-led actions opposing ICE policies that harm immigrant workers and families because I believe deeply in collective action and the power of

standing with workers as they organize and fight for dignity and safety.

3. **Protecting Our Immigrant Neighbors.** The entanglement of state and local law enforcement with ICE's federal immigration enforcement makes everyone less safe. To end such entanglement, would you support the following measures....?
  - a. Preventing police and court officials from inquiring about immigration status? **YES**
  - b. Prohibiting any new 287(g) agreements, i.e., agreements in which state and local law enforcement are deputized to act as ICE agents? **YES**
  - c. Calling on Gov. Healey to end the Department of Correction's 287(g) agreement with ICE, the only such contract in New England and the only such contract in a state with a Democratic governing trifecta? **YES**
  - d. Prohibiting local law enforcement from assisting ICE such as by allowing ICE to use facilities, properties, and equipment or providing information to ICE such as relating to upcoming court appearances? **YES**
4. **Language Access.** Would you support building the capacity of key public-facing state agencies to meet the language access needs of an increasingly diverse population by standardizing and enforcing language access protocols and practices? **YES**
5. **Immigrant Legal Aid.** In 2025, the MA Legislature created a new fund to provide cost-free legal services to immigrants at risk of deportation. Would you support increasing the funding for the program and codifying the fund into law? **YES**
6. **Community Trust and Accountability.** Would you support legislation to ban former ICE or Border Patrol agents from serving as police officers, teachers, or other public employees in Massachusetts? **YES**

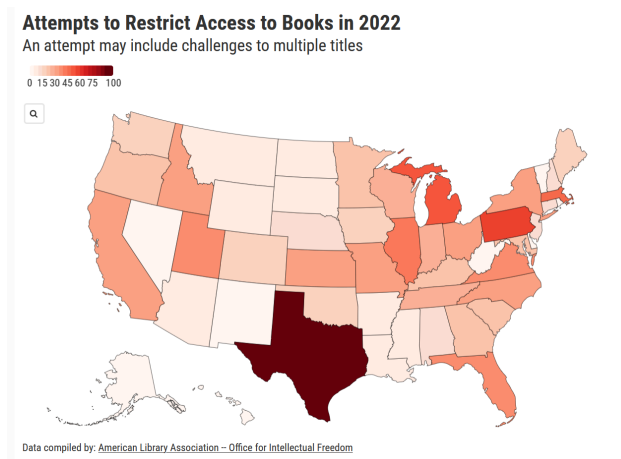
## H. A Welcoming Society

Our commonwealth is at its strongest when we recognize and celebrate the diversity of our population.

Massachusetts has often been a leader on LGBTQ rights, being the first state to legalize same-sex marriage and having passed a strong trans anti-discrimination law (with additional protections for health care passed more recently). However, efforts to ban LGBTQ-friendly books are not just a "red state" problem but unfortunately far too common here at home.

Although Massachusetts likes to view itself as a leader in social progress, racial discrimination has been prevalent in our history and in our present, and a legacy of oppression and expropriation of indigenous communities remains unaddressed in policy and iconography.

**In 2022, there were 45 attempts to restrict access to books in MA, with 57 titles challenged. ([Source](#))**



1. Please explain your principles and proposals relative to building a welcoming society.

I believe every person regardless of race, gender, sexual orientation, immigration status, ability, religion, or ethnicity deserves to be treated with dignity and respect. Legislators have a responsibility to ensure that these values are reflected in lawmaking. I support policies that protect people from discrimination in housing, employment, education, healthcare, and public spaces, and that strengthen enforcement so those protections are real and meaningful.

I also believe we must be proactive in advancing equity by addressing the systemic barriers that continue to impact communities of color, immigrants, LGBTQ+ individuals, people with disabilities, and others who have historically been excluded or harmed. Everyone deserves to feel safe, seen, and valued in their community, and I will work to ensure policy reflects that.

2. Optional/As Applicable: Please indicate work you personally have done to make MA a more welcoming place for all.

I am a volunteer with LUCE protecting our immigrant neighbors' rights and work within my professional capacity to keep our communities safe through grassroots organizing, information sharing and mutual support.

3. **Right to Read.** Right-wing efforts to ban books from school or public libraries disproportionately target books about LGBTQ people and communities of color. Would you support legislation to prevent book removal due to personal or political views in public and school libraries, require public libraries to adopt the American Library Association's Library Bill of Rights, and protect librarians from retaliation? **YES**
4. **Data Privacy.** In recent years, we have seen the dangers of unregulated data markets: right-wing groups tracking women seeking abortion care, domestic abusers tracking partners/exes, ICE agents tracking immigrants, and much more.
  - a. Do you support passing legislation to ban companies from selling our sensitive data, such as biometric and location information? **YES**
  - b. Do you support applying a private right of action to privacy laws, to ensure consumers have access to the civil court system when companies violate the law? **YES**
5. **Indigenous People's Day.** Would you support legislation to replace Columbus Day with Indigenous Peoples in state statute as the recognized holiday on the second Monday of October? **YES**
6. **School Mascots.** Would you support legislation to prohibit the use of Native American mascots in Massachusetts public schools? **YES**

## I. Good Government and Strong Democracy

A strong democracy depends on a transparent and representative government and an engaged public. Too often, however, we see centralized, unaccountable power and barriers to participation. An undemocratic, centralized power structure on Beacon Hill makes it easier for lobbyists to target the top and undermine the system. Despite recent reforms, a weak public records system stymies government accountability: MA is one of only two states where all three branches of state government claim to be exempt. A strong democracy requires an engaged electorate, but voter turnout in midterm elections, and especially local elections, remains low. Although election modernization legislation in 2014, 2018, and 2022 helped bring much-needed reforms, we still lag behind states in New England and around the country in making voting accessible (Maine, for instance, has allowed for Election Day Registration since the 1970s).

A centralized power system, a skewed campaign finance system, and restrictive voting laws together help create a situation in which our elections are the [least competitive in the country](#).

### MA has the least competitive elections in the country. ([Source](#))

State Legislative Competitiveness Index in Massachusetts, 2010-2024					
Year	Open seats	Incs. in contested primaries	Major party competition	Competitiveness Index	Rank
2010	17.0%	8.4%	48.0%	24.5	39 / 44
2012	5.0%	10.0%	33.0%	16.0	44 / 44
2014	11.0%	9.6%	38.5%	19.7	39 / 44
2016	6.5%	10.7%	23.0%	13.4	44 / 44
2018	12.0%	11.4%	30.0%	17.8	44 / 44
2020	7.5%	12.4%	21.0%	13.6	44 / 44
2022	12.0%	11.9%	30.0%	18.0	44 / 44
2024	9.5%	9.9%	20.0%	13.1	44 / 44

**Lower-income, ethnically diverse municipalities have lower voter turnout than whiter, more affluent communities, leading to reduced voice in state politics.**

<u>Municipality</u>	<u>Turnout (Nov 2022)</u>
Lawrence	22.8%
Springfield	24.9%
Lowell	29.7%
Chelsea	31.7%
New Bedford	33.0%
Fall River	33.0%
Brockton	33.1%
Southbridge	34.3%
Holyoke	34.4%
Lynn	35.0%

[Source: MassLive](#)

1. Please explain your principles and proposals relative to good government and strong democracy.

My campaign is about listening to residents and bringing their voices to the State Senate. I believe good government starts with transparency, accountability, and making it easier for everyday people to participate. Too often, government feels closed off and decisions feel like they're made without the input of the people most impacted. We have to change that.

As a first-time candidate, I'm seeing firsthand how difficult it is to raise money and how much money shapes who is taken seriously in politics. That creates real barriers for grassroots candidates and limits who feels they can run. I believe we need to reduce the influence of money in politics and create more pathways for people from all backgrounds to run and win.

I also believe we need to make it easier for residents to engage in our democracy. That means expanding access to voting, including same day registration, and strengthening transparency laws so people can see how decisions are made across all branches of government.

2. Optional/As Applicable: Please indicate work you personally have done to promote transparency, campaign finance reform, legislative rules reform, and access to voting.
3. **Accessibility.** Central to good government is accessibility and responsiveness. Would you commit to the following?
  - a. Sending out a newsletter that includes explanations of recent votes at least once per month? **YES**
  - b. Holding office hours on weeknights or weekends at least once per month? **YES**
  - c. Holding town halls in your district at least twice per year? **YES**
4. **Public Records Law.** Massachusetts is the only state where the Governor's Office, the Legislature, and the Judiciary claim full exemptions from the public records laws. Do you support the ballot initiative to eliminate these exemptions? **YES**
5. **Legislative Accountability.** Massachusetts's system of 'leadership stipends' is an outlier among the 50 states. Do you support the ballot initiative to reform this system to create a fairer pay structure and hold committees to higher standards of transparency and productivity? **YES**
6. **Legislative Research Bureau.** The Massachusetts legislature is the only legislature in the nation without a professional, non-partisan research bureau. Would you support the creation of such an office? **YES**
7. **Expanding Access to Public Meetings.** Would you support updating Open Meeting Law so that people can choose to participate remotely in public meetings on a

permanent basis and providing the necessary funds to municipalities to implement this? **YES**

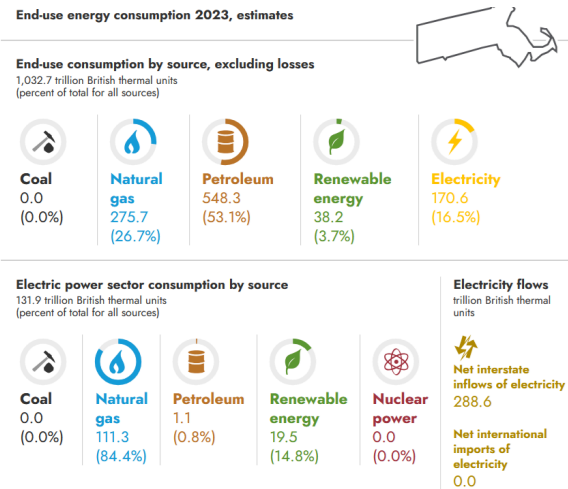
8. **Same Day Registration.** Massachusetts lags behind other states in making voting accessible for all. Do you support eliminating Massachusetts's arbitrary and exclusionary 10-day voter registration cutoff and allowing voters to register or update their registration at the polls on Election Day and during the early voting period? **YES**
9. **Inactive Voter Lists.** Massachusetts is the *only* state in the country where voters are placed on the Inactive Voter List—one step before being removed from the voter rolls—if they fail to return our annual municipal census. Do you support removing this barrier to participation? **YES**
10. **Ranked Choice Voting.** Would you support legislation to allow cities and towns to adopt ranked choice voting in local elections? **YES**
11. **Universal Voting Rights.** Would you support restoring the franchise to incarcerated individuals serving time for felony convictions (Their right to vote was taken away by ballot twenty years ago)? **YES**

## J. Sustainable Infrastructure and Environmental Protection

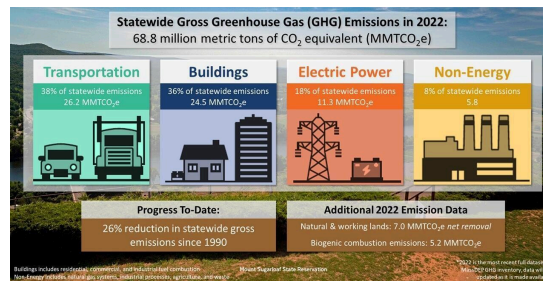
As a coastal state, Massachusetts will be hit particularly hard by climate change, but we are not responding with the necessary urgency. Massachusetts has ambitious and necessary greenhouse gas reduction goals, but we are [not on track](#) to meet them. Our state remains overly dependent on fossil fuels like oil and gas despite the pollution and myriad public health harms they produce and the ample [data](#) showing that we must leave fossil fuels in the ground. As we now face a federal government hostile to renewable and climate action, the responsibility lies with state government to take leadership in accelerating a green energy transition and ensuring that equity is at the forefront.

Public transit must play a role in decarbonizing our transportation system, as well as advancing complementary goals of equity and inclusion. However, Massachusetts politicians have lost their understanding of public transit as a public good that benefits all residents and businesses in Massachusetts, not just those who use it in their daily lives. The greatest evidence of this is their neglect of the MBTA: it would need [more than \\$24 billion](#) to bring infrastructure and equipment up to a state of good repair. Regional Transit Authorities that serve communities, including Gateway Cities across the state, face enormous capital needs as well.

**Despite recent progress, Massachusetts is still overwhelmingly dependent on fossil fuels.**



**Transportation is currently the largest contributor to greenhouse gas emissions in MA.**



1. Please explain your principles and proposals relative to sustainable infrastructure and environmental protection.

Massachusetts is in a unique position to become the leading example in the United States for a coordinated statewide transition to renewable and sustainable energy, and we are already well underway. In 2024, Forbes ranked Massachusetts as the most environmentally friendly state, which shows that residents, businesses and government agencies like the Department of Energy Resources (DOER) are working toward eliminating reliance on fossil fuels. I believe we are in a moment where as a state we need to double down against the pressures of the Trump Administration, which is killing funding and breaking apart federal offices, and progressively tackle priorities to support rapid expansion of sustainable energy sources.

First, we need to address energy affordability. Right now, our families see energy bills climb each year from massive spending on gas pipelines, grid-scale energy infrastructure investments, and the lack of sufficient supply of renewable energy. Too many families also live in older homes with poor insulation and inefficient heating, but have not yet gotten support through Mass Save. Especially in the 1st Suffolk district, families are often paying for energy supply through a third-party energy supplier. It is critical we invest in renewable energy, transition off gas, expand access to the Mass Save program, and ban third-party suppliers from marketing to residents. We should also limit guaranteed profits in utility infrastructure projects and curb spending through the Gas System Enhancement Program.

Second, every family should have safe, reliable, affordable, and accessible public transit. The 1st Suffolk district relies on public transit. We need to reduce traffic to ensure buses arrive on time and run quickly. We also need to invest in maintaining and expanding public transportation. This includes expanding service times, reducing delays by replacing signals, and electrifying our Commuter Rail system. In order to increase service times, we need to recruit and retain bus drivers and train operators. I would take every step to ensure drivers are safe in the workplace. All of this allows families the option not to drive. We also need to build new housing near public transportation to make shifting to transit more possible.

Third, we must ensure that our neighborhoods are climate resilient. As extreme heat worsens, our families will be at greater risk of heat stroke. This is true from South Boston to Dorchester, but nowhere more so than Chinatown, the hottest neighborhood in our city. Our district is also a coastal district. As sea levels rise, neighborhoods like Dorchester and South Boston will be on the front lines of flooding. We need to protect our coastline by investing in large-scale public infrastructure,

including nature-based solutions. We also need to expand our tree canopy and retrofit buildings to protect our neighbors from heat and reduce air pollution at the same time.

2. Optional/As Applicable: Please indicate work you personally have done to protect the environment and expand access to public transportation.
3. **Fossil Fuel Infrastructure.** Do you oppose the expansion of fossil fuel infrastructure in the state? **YES**
4. **Make Polluters Pay.** Do you support holding the corporations who are most responsible for causing global climate change financially accountable to pay for damages caused by climate driven extreme weather and the infrastructure improvements needed for resilience? **YES**
5. **Expanding Solar Coverage.** Would you support legislation to create permanent incentives for siting solar projects where they have the least environmental impact, i.e., on buildings and disturbed land? **YES**
6. **Banning Predatory Industry Practices.** Third-party electricity suppliers notoriously give confusing or misleading offers and often target low-income and older adults. Would you support banning third-party electricity suppliers that sell directly to residents? **YES**
7. **Utility Accountability.** Would you support legislation that restricts investor-owned utilities' profits, including but not limited their ability to recover lobbying, advertisement, trade association dues, and investor relations expenses on utility bills? **YES**
8. **Data Centers.** Data centers across Massachusetts and the country have been driving heavier energy and water usage, leading to higher costs for everyday customers. Would you support the following measures...?
  - a. Requiring primary-use data centers to pay for the cost of utility infrastructure upgrades, procure renewable back-up energy sources, and provide quarterly water and energy usage data? **YES**
  - b. Imposing a moratorium on new large-load data centers while a commission is convened to define appropriate community and environmental regulations? **YES**
  - c. Repealing tax exemptions for data centers? **YES**
9. **Plastic Bag Ban.:** Would you support a statewide ban on single-use plastic bags? **YES**
10. **Electrifying Public Transit.** In Massachusetts, 43 percent of GHG emissions in 2016 came from transportation infrastructure and vehicles. Tackling this will require a shift away from cars and toward public transit, as well as electrification of both. Would you support requiring the MBTA to operate an all-electric system by 2035? **YES**

11. **Free Public Transit.** Do you support making public transit in the Commonwealth fare-free? **YES**

**III. ADDITIONAL COMMENTS**

***Limit answer to 150 words or fewer.***

Use this space to add any other issues important to your vision for Massachusetts or any other matter you think progressive voters should know about your candidacy.