



PROGRESSIVE MASSACHUSETTS
2026 Legislative
ENDORSEMENT QUESTIONNAIRE

Candidate: Matt McLaughlin

Office Sought: State Senator, Second Middlesex

Party: Democrat

Website: <https://www.mclaughlinforsenate.com/>

Social Media Handles: @Mattforstatesenate - Facebook and Instagram

OVERVIEW

We view our questionnaire as an educational resource, for both candidates and voters, on progressive approaches to the issues. It provides candidates the opportunity to address a number of important issues beyond the surface talking points and provides progressive voters an extremely valuable resource when making a decision.

Our Questionnaire starts with an “About You” section and ends with an opportunity for you to include additional remarks beyond what we asked.

The bulk of our questionnaire is focused on the issues outlined in our [Progressive Platform](#), which also inform our [Legislative Agenda](#). We are interested in your overall philosophy as well as your views on specific policy and legislation.

Each section features charts or graphs (with links to sources) that illustrate one or more facets of the issue under discussion.

*Each section contains open-ended questions and YES/NO questions. **If the question is a YES/NO question, please answer either YES or NO.** If you leave a question blank, your answer will be recorded as a NO. Feel free to expand your answers, but **please keep answers < 150 words** and use your own words (we want human-generated answers, not AI-generated).*

Issue Subsections:

- A. Revenue and Taxation
- B. Jobs and the Economy
- C. Education
- D. Health Care
- E. Housing
- F. Community Safety
- G. A Humane Immigration System
- H. A Welcoming Society
- I. Good Government and Strong Democracy
- J. Sustainable Infrastructure and Environmental Protection

I. About You & Your Governing Approach

1. Why are you running for office? And what would be your top 3 priorities if elected?

My top legislative priority (singular) is to make my community and this state more affordable for the people who live here. In all my policy priorities I will center working families and community safety. I believe my perspective is needed at the state senate, where the voices of many vulnerable community members are too often drowned out by the special interests and crippling bureaucracy that halt progress on essential public goods. I am running for office because this community has become unaffordable for so many people and we are losing too many community members. In Somerville I have worked for decades to advocate for fair wages, affordable housing, and community needs. I am taking that fight to the state level because there is so much more work to do to ensure that Massachusetts is an affordable and safe place to live for working families.

2. What prepares you to serve in this capacity?

I am a proven leader committed to building healthy, resilient communities, strengthening local businesses, and expanding opportunity and fairness across our Commonwealth. As Somerville native, Iraq War veteran, youth advocate, labor activist, and community organizer, I have served as City Councilor for the most diverse district in the city, where I have worked to ensure every resident has a voice and that government operates effectively and equitably for all. I am eager to bring my record of service and community leadership to the next stage of public service.

3. Do you consider yourself progressive, and if so, how would you define “progressive”?

Yes. In 2013 I ran for city council in my neighborhood of East Somerville as a progressive and underdog candidate at a time when progressive candidates were far from guaranteed victories in Somerville. Since that point I have led and won insurgent campaigns in Somerville to fundamentally transform the city government to reflect the progressive vision of my working class neighbors. Progressive values mean centering underrepresented populations, like my strong immigrant district in East Somerville. Progressive politics is focused on economic and social progress for the working class and for the marginalized in our community. It means ensuring that the government is there to protect our neighbors and ensure all people have the opportunity for a life free from oppression and with dignity and basic needs met.

4. What do you view as the biggest obstacles to passing progressive policy at the state level, and how do you plan to overcome these obstacles?

I see the largest obstacle to passing progressive policy as the inertia of indecision and the refusal to confront working class issues head on. Massachusetts is a great place to live in, and especially in my community in Somerville, but too many folks are being priced out

and forced out of the community and no longer have the protection of a government that values the marginalized people in our community. Somerville does a lot to protect our neighbors, but if folks can't afford to live here, our values don't mean anything to them. We need to do more to keep more people here and grow our progressive and welcoming community.

5. What is one policy pioneered by another state (or at the municipal level) that you would like to see Massachusetts adopt?

Some of the largest barriers to affordability in Massachusetts are housing, healthcare, and childcare. There are clear opportunities to invest in affordable housing, multifamily housing, social housing that will create more space for communities to grow and simultaneously we need to protect against displacement through rent control and tenant protection measures. A single payer healthcare, medicare for all program would help residents who struggle with massive medical debt and allow residents to take advantage of essential medical care without out of pocket costs. On childcare, clear models for expansion of universal childcare programs exist. Here in Massachusetts, Cambridge provides universal pre-K for all 4-year-old children. New York City is even implementing full-day care for all 2-year-olds, and at the state level, New Mexico offers free childcare for all families. These are proven investments that help communities and should be a reality for all people in Massachusetts.

6. Provide an example of a time that you built a broad coalition to achieve a desired outcome.

I was elected and served as president of the Somerville City Council for three consecutive terms at the height of the Covid-19 pandemic and worked around the clock coordinating with city staff, elected officials, community advocates, and residents to ensure the government remained open and the needs of the most vulnerable residents were met. In a time of uncertainty and in the midst of growing distrust in the efficacy of government, I worked across all parts of the city to retain essential services, expand programming to meet the growing needs for residents, and build back trust in effective and progressive government.

7. (For incumbents only) Each year, Progressive Massachusetts compiles a scorecard of key roll call votes, available at <https://scorecard.progressivemass.com>. Please use this space to explain any discrepancies between your votes and the progressive position.

8. (For challengers or candidates in open races only) How do you see yourself as similar to or different from the current holder of the office you are running for?

I believe Sen. Jehlen has been a progressive leader for this district and I appreciate and respect her commitment to hearing from residents and working for many years to advocate for this community. I am running to grow that progressive vision and center working class voices to combat the affordability crisis in the region. I am running to

ensure the Second Middlesex District remains a beacon of policy innovation, grounded in service, strengthened by community, and focused on results for the people who call it home.

II. The Issues

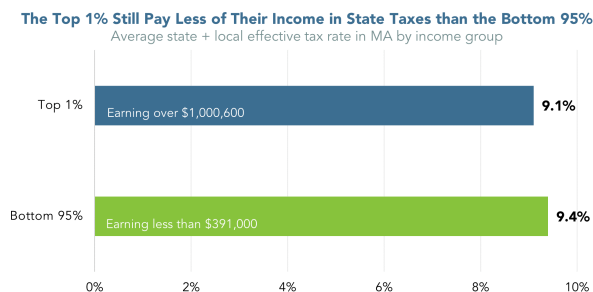
A. Revenue and Taxation

Although Massachusetts has developed the moniker of “Taxachusetts,” our history shows the opposite. Between 1977 and 2016, Massachusetts [reduced state taxes](#) by more than all but two other states. Because of income tax cuts enacted between 1998 and 2002, Massachusetts lost over \$4 billion in tax revenue *each year*—\$4 billion not invested in our roads, bridges, schools, parks, and services. Such cuts to the state income tax, combined with [low corporate income taxes compared to other states](#), have meant increasing reliance on regressive taxes and fees and curtailing our ability to invest in vital infrastructure. It also restricts legislators’ ability—and willingness—to pass new and visionary legislation, as there is a continual shortage of funds for existing priorities.

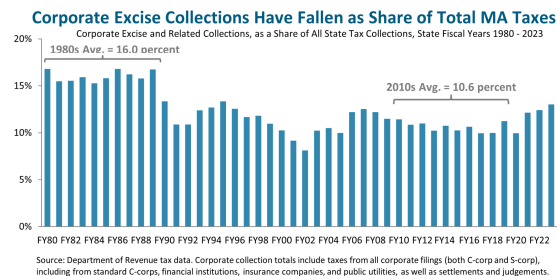
Although we saw a welcome shift when MA voters passed the Fair Share Amendment and added more progressivity to our tax code, the Legislature in 2023 voted to give tax cuts to multi-million-dollar estates, large corporations, and day traders, blunting the full impact of the win. We cannot tax-cut our way into competitiveness; MA strengthens our competitiveness when we invest in our people and infrastructure.

Moreover, Massachusetts faces the threat of steep federal budget cuts, but given that we have the same GDP as the country of Sweden, we have the ability to raise the revenue to meet needs if we have the will to do so.

Even with the recently passed Fair Share Amendment, the top 1% still pay a lower effective tax rate than the bottom 95%.



Even as corporations are securing an increasing share of total income, their share of taxes has been falling.



1. What principles do you bring to considerations of state revenue and tax policy? How should we raise more revenue to adequately fund our communities for the future?

We absolutely need to reform our tax structure to align with a progressive vision for the commonwealth. The Fair Share Amendment, which I advocated and campaigned for, showed that a future here in Massachusetts is possible that centers the needs of working people by implementing progressive taxation that forces everyone to pay their fair share. The income gap in Massachusetts is growing and it is among the largest in the country. We need to consider this inequality as a symptom of regressive taxation policy that refuses to confront monied interests and maintains an inertia of government that has not met the moment and has not fully committed to growing our communities for the working class.

2. Optional/As Applicable: Please indicate work you personally have done to advance your principles on revenue and taxation (legislation, community work, published writings, etc.).

At the local level, Massachusetts state law limits our ability to tax. I have long advocated for tax programs that would raise important money to invest in our community including and importantly a real estate transfer fee that would bring millions of dollars into our community and allow local residents to benefit from the increased land value that is provided to large landowners in our community, in large part, due to the investments we have made over the years in this community that make it a great place to live and work. Additionally, I have worked consistently at the local level to ensure that universities should pay their fair share in their communities as well. Somerville and other communities with higher education institutions should have clearer opportunities to negotiate Payment In Lieu of Taxes (PILOT) agreements with the larger non-profit organizations.

3. **Corporate Tax Breaks.** Corporate tax breaks cost Massachusetts [more than \\$1 billion in foregone revenue](#) each year. Which of the following steps would you support?
 - a. Repealing any tax break that does not provide the intended benefits in a cost-effective manner? **YES. We cannot afford to continually lose money to tax breaks that are depriving our communities and working class families of essential tax dollars.**
 - b. Establishing sunset dates for all tax breaks to require periodic review? **YES. Our tax code should clearly be regularly reviewed in order to ensure that it is effective in raising money in a way that ensures that everyone pays their fair share, and that costs and taxes are not disproportionately impacting working class families.**
 - c. Ending the current sales tax exemptions for aircraft and aircraft parts, which costs the Commonwealth approximately [\\$30 million](#) each year? **YES. This is a clear tax subsidy and a handout to the wealthy.**

4. **Corporate Disclosure.** Would you support legislation to make publicly accessible the reports that are already filed annually by publicly traded corporations, detailing their sales, profits, taxable income, and taxes paid? **YES. Transparency is essential to developing progressive policy. We cannot allow large, publicly traded corporations to hide behind a shell game of tax policy and refuse to pay their fair share.**
5. **Corporate Fair Share.** Large multinational corporations like Amazon and Walmart hide significant profits offshore in order to avoid paying taxes here in Massachusetts and in other states. Would you support legislation to increase the amount of offshored corporate income subject to MA's corporate income tax to 50%, the maximum allowable amount and the amount taxed by most of our neighboring states? **YES. Large corporations have large incentives to hide profits offshore in order to avoid paying their fair share. As the federal government has proven incapable and unwilling to close these loopholes, we need to do all we can at the state level to ensure that we stand up to big money and force large corporations to pay their fair share in taxes to the communities they operate in.**
6. **Taxing Extreme Wealth.** Would you support the establishment of a Massachusetts wealth tax, which applies only to extremely rich taxpayers (with a threshold of at least \$100 million) and taxes them on a percentage (e.g., 1% annually) of their wealth above the threshold? **YES. Progressive taxation means ensuring that all people, and especially the ultra-wealthy pay their fair share in order to fund community benefits and essential public services. The ultra-wealthy are also the most able to avoid paying taxes through unintended loopholes, which deprive the state and working class families from public dollars.**
7. **Digital Ads Tax.** Would you support imposing new tax targeted at large companies that amass our personal data, either through a data-mining excise tax or a tax on digital advertising, as introduced or passed in states like New York and Washington State? **YES. Business practices change rapidly and it's important that the state is able to ensure that businesses practicing in the state are taxed fairly and in a way that takes into account the real value of the businesses.**
8. **Preventing Regressive Tax Cuts.** Massachusetts needs to raise new revenue to advance a progressive agenda. At the same time, we also need to fight regressive tax cuts that weaken our public services.
 - a. MA stands to lose hundreds of millions of dollars in revenue each year due to corporate tax cuts in Trump's Big Ugly Bill that will automatically enter the MA tax code. Do you support permanently decoupling the state tax code from these federal changes? **YES. As a progressive state, we need to ensure that the failures of the federal government do not impact our ability to enact fair taxes that center working families.**
 - b. Will you oppose the corporate lobby's ballot question to reduce the state income tax, a measure which would cost the state \$5 billion a year? **YES. We need to ensure that the income tax is progressive and responsive to the needs of our communities.**

- c. Will you oppose the corporate lobby's ballot question to reform the state tax collection cap law (62F) in order to make the state more frequently hit the cap and lose out on critical investments? **YES. Same answer as above - we need to ensure that the income tax is progressive and responsive to the needs of our communities.**
9. **Rainy Day Fund.** Massachusetts will see significant budget cuts next year due to Trump's Big Ugly Bill. Would you support using 15% of the rainy day fund in order to prevent cuts? **YES. Part of providing a welcoming and progressive community that provides for the needs of our most vulnerable means that we need contingency planning for reductions from the federal government.**
10. **PILOT Reform.** Do you support enabling cities and towns to require large tax-exempt not-for-profit institutions (i.e., with property valued at or above \$15M) to make payments in lieu of taxes to the municipality equal to 25 percent of the amount that would be paid if they were not exempt? **YES. As indicated above, I have long advocated for and am in full support for community PILOT reform that will allow communities to benefit from the large tax-exempt institutions that choose to operate here.**
11. **Public Bank.** Would you support the creation of a Massachusetts public bank chartered to provide cost-effective financing for small businesses and municipalities, land trusts and cooperatives, and climate adaptation/remediation projects? **YES**

Working class families and small business owners (and of course municipalities) need clear and affordable access to capital for a number of essential uses. Large climate and sustainability projects are a clear barrier for property owners, business owners, and municipalities as we continue to grapple with the realities of climate change. Decarbonization efforts and climate resiliency projects will take sustained investment and a commitment from the state government to help fund.

B. Jobs and the Economy

Massachusetts ranks as one of the top ten [most unequal states](#), as the gains from economic growth have disproportionately benefited the already well-off. Compounding this, we are one of the most expensive states in the country for [health care](#), [housing](#), and [child care](#), all of which strain wages. A strong economy depends on strong wages, as workers spend and help local economies thrive. Although Massachusetts now has a \$15 minimum wage, a living wage for a single adult without children is now [\\$27.89 per hour](#).

In recent decades, unions have been under attack nationally. However, unions played—and continue to play—a pivotal role in creating a strong middle class. With weaker unions (or no unions at all) come weaker social and economic rights and an imbalanced economy. Strengthening the rights and power of labor is essential to an economy that works for all.

Productivity has grown significantly since the 1970s, but it is not being reflected in higher wages.



<https://archive.massbudget.org/reports/swma/>

The minimum wage in Massachusetts is well below a living wage. ([Source](#))

	1 Adult			2 adults (both working)		
	0 children	1 child	2 children	0 children	1 child	2 children
Living Wage	\$30.58	\$58.26	\$76.55	\$19.63	\$31.61	\$39.61
Poverty Wage	\$7.67	\$10.40	\$13.13	\$5.20	\$6.57	\$7.93
Minimum Wage	\$15.00	\$15.00	\$15.00	\$15.00	\$15.00	\$15.00

1. Share your principles and proposals regarding creating good-paying jobs for all and reducing inequality in the Commonwealth.

I have always supported working families and frontline workers, by fighting for organized labor, local hiring, and prevailing wage.

2. Optional/As Applicable: Please indicate work you personally have done to advance your principles on creating good-paying jobs for all and reducing inequality (legislation, community work, published writings, etc.).

I have spent my entire life, and especially in my role as an elected official, working for unions, supporting union efforts, and advocating for working class families. I grew up in a working family in Somerville as the son of janitors, which had an indelible impact on my life and support for working families. In my professional life I worked at the US Department of Labor assisting homeless veterans in finding employment. I also served as a Union shop steward in The American Federation of Government Employees Local 948.

3. **Livable Wages.** Although Massachusetts now has a \$15 minimum wage, that is still not a living wage in much of Massachusetts, and \$15 has lost a lot of value due to high inflation. Do you support the following steps...?
 - a. Raising the minimum wage to \$20 per hour? **YES**
 - b. Eliminating subminimum wages? **YES**
 - c. Ensuring that the minimum wage law applies to municipal workers? **YES**
 - d. Indexing the minimum wage to inflation? **YES**
4. **Wage Theft.** Do you support holding businesses responsible for the wage violations of their subcontractors when the work they do is substantially connected to the company's operations? **YES and on the local level I have worked to pass and enforce our own wage theft ordinance.**
5. **Paid Leave for All Workers.** In 2018, MA passed the strongest paid family and medical leave law in the country. However, the law did not include municipal workers or graduate student workers. Would you support extending the law to make sure that all workers have access to these vital benefits? **YES. Fair wages for fair work means fair time off for workers and working families.**
6. **Paid Time Off.** The US is the only advanced industrial country where workers are not guaranteed paid time off. Would you support legislation to require employers to offer full-time employees at least two weeks of paid time off each year, which they can use for any reason with no loss of pay? **YES. Same as above - fair wages for fair work means fair time off for workers and working families.**
7. **Right to Strike.** Would you support legislation to legalize the right to strike for public employees (with the exception of public safety personnel) after six months of failed negotiations with their employer? **YES, I support the right to strike and the rights of unions to negotiate in good faith to get fair working conditions.**

8. **State House Unionization.** Would you support legislation to extend collective bargaining rights to State House staff? **YES. All workers deserve the right to bargain fairly and unionize.**

C. Education

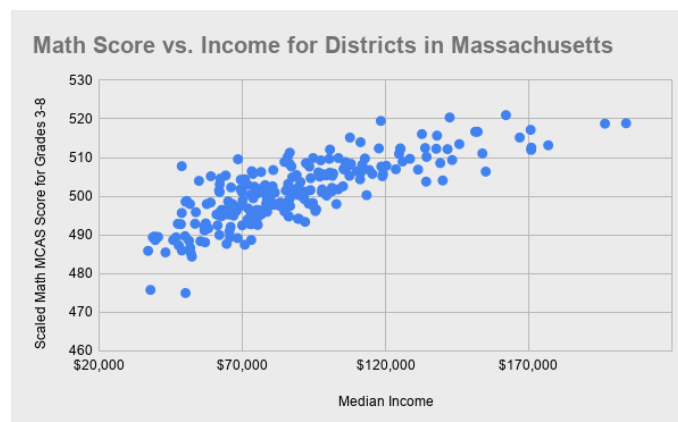
Massachusetts parents and caregivers face the [highest child care and early education costs of any state in the US](#). The average annual cost of infant care in Massachusetts is more than half of what a full-time minimum wage worker earns in a year. These costs are prohibitively expensive for low- and middle-income families, who are forced to choose between making ends meet and saving for the future on one hand, or affording child care on the other.

Public education plays a fundamental role in democracy, cultivating informed, well-rounded community members and providing the knowledge and skills needed for economic mobility and opportunity. Although our public education system gets high marks overall, it remains one of the [most unequal](#) in the country, with significant opportunity and resource divides based on income and race. In 2019, Massachusetts passed the Student Opportunity Act to update the formula for state aid to public school districts and correct these inequities, but schools have faced added strains due to the pandemic and inflation.

Public education has also been under attack by powerful corporate interests seeking to undermine public schools, teachers, and unions. These groups invest millions of dollars to promote the expansion of privately run charter schools, which siphon money from our public K-12 districts while largely excluding students with the greatest needs. Costly, mandated standardized test results are used to label schools as “failing” and justify these privatization schemes. State receiverships in struggling school districts take power away from communities and often facilitate privatization schemes that could never achieve democratic support.

At the same time, our understanding of education has also broadened. No longer do we only talk about K-12 education; rather, most of the [fastest-growing occupations](#) require education beyond a high school diploma. Massachusetts has been disinvesting from public higher education for the past two decades, leading to higher tuition costs and putting students at risk of long-term debt (if they are even still able to attend). Our public colleges and opportunities are an economic engine for local economies as well as a pathway to economic opportunity, and when that opportunity is cut off for students, we all lose out.

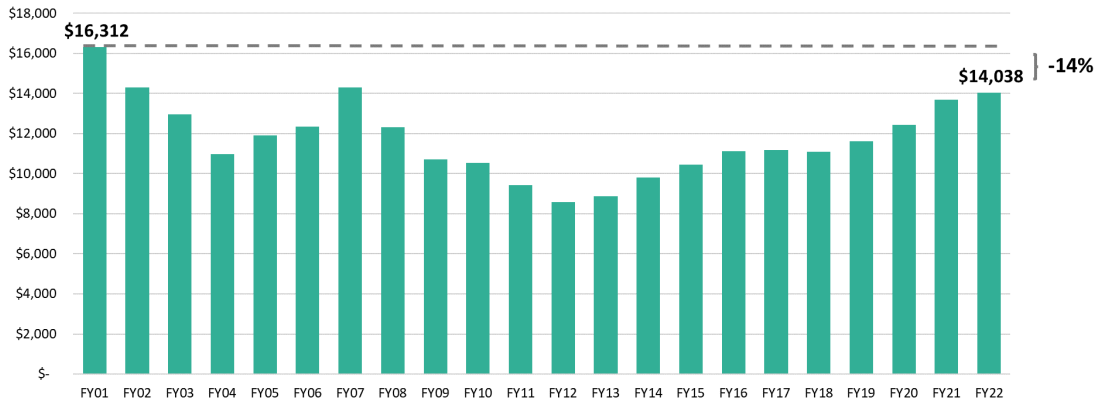
Standardized test scores have a very strong correlation with the income of the school district. ([Source](#))



Massachusetts has been disinvesting from higher education and shifting the cost burden onto students. ([Source](#))

Higher Education Funding Per Student Cut by 14 Percent Since FY 2001

Massachusetts higher education spending, per resident student, FY 2001-FY2022 adjusted for inflation (2024\$)



1. Please share your principles and proposals regarding public education.

Investing in public education is critical to building resilient communities and it is essential that we continue to invest in public education statewide in order to invest in students and pay fair wages to teachers and staff.

2. Optional/As Applicable: Please indicate work you personally have done to advance your principles on public education.

I have consistently supported school department budgets in Somerville that reflect the needs of local families and provide for effective education and fair wages for educators.

3. **Affordable Child Care.** Would you support legislation to make child care free for low-income families and ensure that no family has to pay more than 7% of their income on child care? **YES. But further, Massachusetts should think bigger and work towards a more universal childcare system.**

4. **Universal Pre-K.** Would you support creating universal, free Pre-K, accessible to any resident of Massachusetts, integrated into the public school system? **YES**

Child care is essential to family stability, workforce participation, and future prosperity. By investing in universal pre-K and afterschool care, we are giving families financial relief, supporting our economy, and ensuring that every child has the opportunity to grow and thrive.

5. **Charter Schools.** Charter schools siphon millions of dollars for public education away from public schools and create a two-track system of public schools described by the national NAACP as “separate and unequal.” Do you support keeping the cap on charter schools? **YES**

We need to ensure that public dollars go towards public education. Charter schools often have entrance requirements or wait lists even though they receive public funds. I understand why some parents decide to choose charter schools rather than district schools, but I would rather use that data to work to improve district public schools and I would rather see increased funding for public schools.

6. **K-12 Education Funding.** Our public schools are losing out on the full benefits of increased funding due to a glitch in how the Chapter 70 formula treats inflation. The combination of several years of high inflation and an inflation cap in education funding calculations has locked in lower levels of aid to districts. Do you support fixing this gap and ensuring that our school districts get the funding they deserve? **YES**

Cities across the commonwealth need more flexibility to address their communities’ needs. The Student Opportunity Act was a hugely important investment in Massachusetts children and many communities are seeing much more meaningful investment, but not every community sees that benefit due to technical formulas and rising costs and inflation. Part of public policy is working through real data to determine where policies, even good and important policies, can be tweaked and improved over time. There is more room for more district-specific calculations, and I would advocate for formula changes that will include more equitable districts that have seen further strained local budgets.

7. **Receivership.** The Lawrence Public Schools and Southbridge Public Schools are currently under state receivership, with a state-appointed receiver assuming the powers of a superintendent or democratically elected school committee. The state takeover has not produced sustainable gains and has at times been characterized by [chronic mismanagement](#). Would you support ending the practice of state receivership and returning power to democratically elected school committees? **YES. Local communities should continue to retain democratic control of local school districts, but the state still has a role to ensure that underserved communities are funded fully and equitably.**
8. **Guaranteed Education for Incarcerated Youth.** Would you support legislation to mandate that at least 6 hours of credited daily education is available for all incarcerated, school-aged youth, including those with IEPs? **YES. Without a doubt all children deserve a good education and we cannot abandon that commitment to incarcerated youth.**
9. **Comprehensive Sex Education.** Do you support requiring public schools to provide age-appropriate, medically accurate information that is inclusive of all sexual orientations and gender identities and includes topics such as consent and the effective use of contraception? **YES. Clear and informed sex education is an absolutely essential part of good public education that will help them understand the world around them.**
10. **Inclusive Curricula.** Our educational curricula must speak to students’ lived

experiences and recognize and celebrate the diversity of our Commonwealth.

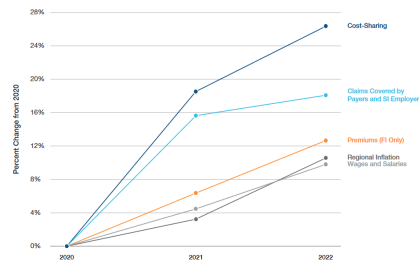
- a. **Racially Inclusive Curricula.** Would you support legislation to ensure that instruction in K-12 education shall include the teaching of accurate histories, writings, and contributions of racial and ethnic groups that have been historically underrepresented or marginalized? **YES**
 - b. **LGBTQ-Inclusive Curricula.** Would you support legislation to ensure that Massachusetts public schools include sufficient instruction on the histories, roles, and contributions of LGBTQ individuals in the history of this country and the Commonwealth? **YES**
11. **Redistributing Institutional Wealth.** Would you support legislation that would levy a small excise tax on private college and university endowments above \$1B to fund free public higher education for all in-state students? **YES. The entire community should benefit from the wealth of large institutions that choose to operate within our community and certainly private colleges and universities should pay their fair share towards funding our communities.**
 12. **Debt-Free Higher Ed.** Would you support legislation to guarantee Massachusetts residents can graduate Massachusetts' public colleges and trade schools completely free of student loan debt? **YES. Community resources like public colleges and trade schools should work for and benefit students and working class families instead of weighing them down.**
 13. **Supporting Public Higher Ed Faculty.** Would you support ensuring that adjunct faculty and part-time staff are eligible for state health care and retirement benefits? **YES. All workers deserve fair compensation packages and all working families within the commonwealth should be able to take advantage of these public benefits.**
 14. **Student Protest & Academic Freedom.** Will you support the unequivocal rights of students and faculty to peaceful protest and freedom of expression in Massachusetts' public and private institutions of higher education? **YES. The right to protest and freedom of expression are essential rights and have always played an important part of student life and higher education in this country.**

D. Health Care

Massachusetts has led the way in providing near universal health insurance coverage, with [97% of the state](#) having health insurance. But until that is 100%, we haven't reached truly universal coverage or tackled critical barriers to accessing care. Disparities in insurance coverage and health care access continue to exist along income, racial, and education lines. Premiums continue to rise, and high deductibles mean that many do not get the health care they need—or suffer from long-lasting debt if they do. We still spend an oversized portion of public and private money on health care, but without necessarily achieving better health outcomes.

Cost-sharing has risen faster than claims paid by employers, and premiums are rising faster than inflation.

Private Commercial Insurance Affordability in Context, 2020-2022

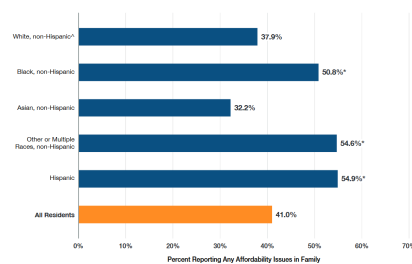


Member cost-sharing and premiums increased at a faster rate than regional inflation and wages and salaries from 2020 to 2022, driven in part by fluctuations in utilization during this time period.

Source: Payer reported data to CNA, Bureau of Labor Statistics data.
 Note: Based on Massachusetts reported membership, which may include non-Massachusetts residents. Claims amounts were adjusted for pharmacy-related reported by payers. Reported cost-sharing, premiums, and claims amounts have not been adjusted to account for benefit carve-outs, which may vary by plan. Claims amounts are published monthly from 2021 to 2022, with 2020 annual totals published in Q3 2021. For 2020 annual 2020 annual, claim amounts are the remaining reported for reporting and data for annual data for 2020. Data for rates is reported in Q1 2020 and Q1 2021. See technical appendix.

Almost half of Massachusetts residents are facing affordability issues with accessing health care.

Any Affordability Issues Among Residents and their Families, Overall and by Race/Ethnicity, 2021



Over half of Black and Hispanic residents reported experiencing health care affordability issues in the past 12 months.

Source: 2021 Massachusetts Health Insurance Survey.
 Note: Only individuals listed as either as reporting any of the following issues: problems paying family medical bills in past 12 months, family medical bills at the time of survey, spending a high share of family income in past 12 months on out-of-pocket health care expenses, and unmet family health care needs due to the cost of care in past 12 months.
 *Reference group.
 **Difference from reference group is statistically significant at the 5% level.

1. Please share your values, principles, and proposals regarding health care access and equity.

Rising healthcare costs are increasingly forcing working families to make choices between care and basic needs such as food and shelter. The current healthcare system in Massachusetts places unnecessary barriers to getting affordable healthcare. Most residents have health insurance, but the overwhelming majority of residents also report issues with affordability of healthcare. A Medicare for All, single-payer systems will help ensure every resident has the right to good, affordable healthcare all while reducing overall healthcare costs. Universal coverage provides predictable and sustainable funding for healthcare systems, predictable and consistent staffing for facilities, and predictable and affordable coverage for patients - all markers of a robust public health system.

2. Optional/As Applicable: Please indicate work you personally have done to advance your principles on health care (legislation, community work, published writings, etc.).

As a city councilor in Somerville I was an early advocate for access to Narcan and safe consumption sites. One of my very first policy orders as a city councilor was an initiative to require first responders to carry Narcan, the life saving medicine that can help revive overdose victims. Narcan is now available citywide in municipal facilities and around the community. The impacts of mental health and substance use disorder issues are not new to me and I have fought my entire adult life for my friends and neighbors who have struggled in this public health crisis. I have and will continue to advocate for a care-first program for substance use issues.

3. **Single Payer.** Would you support legislation to enact a single payer health care system in Massachusetts, which would guarantee health insurance as a right? **YES**

As noted above, Medicare for All, single-payer systems will help ensure every resident has the right to good, affordable healthcare all while reducing overall healthcare costs. Universal coverage provides predictable and sustainable funding for healthcare systems, predictable and consistent staffing for facilities, and predictable and affordable coverage for patients - all markers of a robust public health system.

4. **Medical Debt.** States like Connecticut and Arizona have taken action, in partnership with RIP Medical Debt, to eliminate medical debt for hundreds of thousands of working-class residents. Would you advocate for similar action in Massachusetts? **YES**

Medical debt is a crippling expense for many working class families and we have a duty as elected officials to eliminate that debt to ensure communities remain healthy.

5. **Full Spectrum Pregnancy Care.** Would you support requiring health insurance plans to cover all pregnancy care (including prenatal care, childbirth, and postpartum care), without any kind of cost-sharing, building on the recent mandate to require coverage for abortion and abortion-related care? **YES. Requiring that all insurance plans cover all pregnancy care ensures that families are not discriminated against and**

our state is better able to care for families.

6. **Abortion Access - 1.** Young people under sixteen seeking an abortion must obtain parental consent or judicial authorization. While most young people involve their parents, many cannot, causing delays to timely medical care and counseling. Scared teens may also turn to dangerous measures: going out of state or risking their lives and health with illegal or self-induced abortion. Would you support repealing this restriction on young people's access to abortion? **YES. Young people should have the same access to medical care as older adults and should be able to make informed decisions with medical professionals.**

7. **Abortion Access - 2.** Despite recent overdue updates to abortion care protections in Massachusetts, dozens of patients have to travel out of state every year for necessary care. Would you support expanding abortion access after 24 weeks of pregnancy when in the best professional judgement of a licensed physician? **YES**

A recent Globe report indicated that out of state travel to Massachusetts for the purpose of medical care for abortions has skyrocketed. We have an obligation to continue to support that care for women under the impacts of a federal government that refuses to acknowledge the need for abortion access and care.

8. **Anti-Abortion Centers.** In Massachusetts, anti-abortion centers (also known as crisis pregnancy centers), which have a politically-motivated agenda to dissuade and delay patients from accessing abortion care, outnumber abortion clinics by more than 2 to 1. These centers scare and shame pregnant people considering abortion care and often oppose birth control and emergency contraception. Would you commit to opposing any Massachusetts government support and funding for such centers? **YES, and in Somerville we worked to ban crisis pregnancy centers from operating due to deceptive practices and limited pregnancy services. We have an obligation to residents to ensure community members get accurate information about pregnancy options.**

9. **Overdose Prevention Centers.** An essential part of addressing the opioid crisis, overdose prevention centers allow medical professionals to respond to overdoses and engage participants in medical and behavioral health services. Would you support the legalization of overdose prevention centers? **YES**

I am fully supportive of a care-first program for substance use issues. As noted earlier, as a city councilor in Somerville I was an early advocate for access to Narcan and safe consumption sites. One of my very first policy orders as a city councilor was an initiative to require first responders to carry Narcan, the life saving medicine that can help revive overdose victims. Narcan is now available citywide in municipal facilities and around the community. The impacts of mental health and substance use disorder issues are not new to me and I have fought my entire adult life for my friends and neighbors who have struggled in this public health crisis. I have and will continue to advocate for a care-first program for substance use issues.

10. **Vaccination.** Would you support legislation to eliminate non-medical exemptions to the routine vaccines for children required for school entry, as our neighbors in Maine, Connecticut, and New York have already done? **YES**

Vaccination efforts are a clear community good and we need to work to support and educate families to make good medical decisions for themselves and for the benefit of the entire community. Non-medical exemptions have the potential to undermine community health.

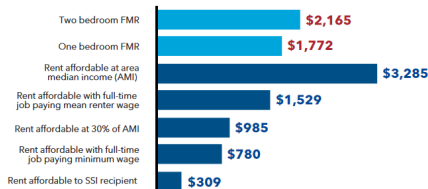
E. Housing

Massachusetts has a lot to offer, but that does little if people can't afford to live here. The [US News & World Report's annual state rankings](#) put Massachusetts at #40 in housing affordability (and #47 in cost of living). To rent the average 2-bedroom apartment in Massachusetts requires an income equal to [\\$41.64 per hour](#), more than twice the minimum wage. A minimum-wage worker in Massachusetts would need to [work 91 hours each week](#) to afford a modest 1-bedroom rental home at fair market rent.

Home ownership has become increasingly out of reach, as the state's median home price is [approximately \\$600,000](#). In more than 20 communities, the median home price recently [passed \\$1 million](#). Meanwhile, we have some of the [most restrictive zoning laws](#) in the country, making it difficult to build more housing to meet the needs of a growing population.

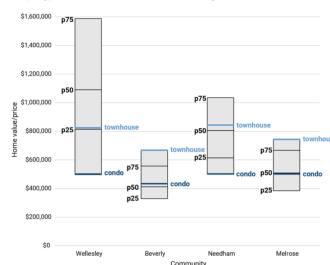
The high cost of housing has led to displacement, and in a growing number of municipalities, the local workforce can no longer afford to live there.

With rental increases far outpacing wage increases, many are left with housing instability.



The overreliance of single-family housing in suburban development, as opposed to denser or multi-family housing, makes communities unaffordable.

Small multifamily condos expand affordability in the wealthiest communities
Comparing prices of new townhouses and condos to existing homes



Source: Existing home values taken from the Census Bureau's American Community Survey 2014-2018. Prices for new townhouses and condos from Crump, Mattos, Schatz and Schuster (2020). Metropolitan Policy Program at Brookings

1. Please share your principles and proposals regarding affordable housing and housing affordability in the Commonwealth.

The affordability crisis is the defining challenge of our time and housing it at the forefront of that crisis. I believe housing policy must serve families, seniors, and working people, not just speculation and luxury development.

2. Optional/As Applicable: Please indicate work you personally have done to advance your principles on housing (legislation, community work, published writings, etc.).

In Somerville, I helped advance a requirement that 20 percent of units in new developments be affordable, ensuring growth delivers real public benefit. I also supported the city's first modern triple decker ordinance, expanding family sized housing while preserving neighborhood character. In the State Senate, I will fight for policies that increase housing supply responsibly, protect tenants, and keep long term residents rooted in their communities.

3. **Emergency Shelter.** How would you evaluate Governor Healey's response to the emergency shelter crisis?

The emergency shelter program was an essential response to a state-wide need and a community concern. Ending essential funding for emergency shelters forced impossible decisions on local jurisdictions like Somerville who are working hard to support shelter services but rely on state support.

4. **Welcoming New Neighbors.** Would you support efforts to locate both long-term housing and short-term shelter in your district? **YES. Growing and protecting the community means ensuring that we are housing and caring for vulnerable and people who have unstable housing.**

5. **Everyone Needs ID.** Would you support easing access to Mass IDs for people experiencing homelessness by waiving the \$25 fee for IDs and easing the verification requirements for youth and adults who are unhoused and seeking IDs? **YES, access to IDs are a clear barrier to entry to many trying to improve their lives and move out of homelessness. IDs are a barrier for job applications, housing applications, welfare applications, and countless other essential uses.**

6. **Local Option Real Estate Transfer Fee.** Would you support enabling all cities and towns the flexibility to design and pass real estate transfer fees that will be effective in their municipalities to raise money for affordable housing production? **YES**

I have long advocated for tax programs that would raise important money to invest in our community including and importantly a real estate transfer fee that would bring millions of dollars into our community and allow local residents to benefit from the increased land value that is provided to large landowners in our community, in large part, due to the investments we have made over the years in this community that make it a great place to live and work.

7. **Green and Affordable Communities.** Would you support doubling the current Deeds

Excise Tax (from \$4.56 per \$1,000 to \$9.12 per \$1,000), upon the sale of real property in Massachusetts, to create a new funding stream to be split evenly between affordable housing and climate resiliency? **YES**

As is true with the real estate transfer fee, the increased value of many properties in the state are due to community-scale improvements that make this a great place to live. Communities need to find ways to capture the benefits of those improvements and use them to enact public goods like affordable housing and climate resiliency.

8. **Rent Control.** Massachusetts residents face some of the highest and fastest-growing rents in the country.
 - a. Would you support lifting the statewide ban on rent control and enabling cities and towns to pass rent stabilization ordinances to limit annual rent increases? **YES. Rising rents are forcing community members out and we need to do all we can to curb the unsustainable housing costs for renters. In Somerville we have worked to pass home rule petitions asking for local rent control legislation.**
 - b. Do you support the proposed 2026 statewide ballot initiative to limit annual rent increases? **YES. Although I don't believe the policy model outlines on the ballot initiative is ideal - as mentioned, I worked towards a Somerville home rule petition and I am supportive of other models that Boston and Cambridge have put forward - this ballot initiative is an important message that Massachusetts rents are being priced out of this community and we need to demand more from the state legislature.**
9. **Tenant Opportunity to Purchase.** Would you support providing tenants of small, medium, and large multifamily properties with the right of first refusal when the owner plans to put a building on the market? **YES, and at the local level I have worked to support similar policy strategies in Somerville like our condo conversion ordinance.**
10. **Right to Counsel.** Would you support legislation to provide legal representation for low-income tenants in eviction proceedings? **YES. All residents deserve fair representation in housing proceedings and it is essential that we work to provide legal representation that would help tenants navigate eviction and protect them from displacement.**
11. **HDIP Reform.** The Housing Development Incentive Program (HDIP) is a multimillion-dollar annual state tax credit program subsidizing market-rate housing in Gateway Cities. Would you support reforming this program to support both market-rate and affordable housing development? **YES. The solution to the housing affordability crisis is a wide spectrum of affordable and market rate solutions and we need to develop policy that is reactive to both ends.**
12. **Social Housing.** Social housing is publicly financed, mixed-income housing, owned by a local or regional housing authority. Would you support efforts to increase state funding for social housing initiatives? **YES. Publicly financed and mixed-income housing is a clear goal of mine and can provide a model for sustainable and long-term housing production initiatives.**

13. **Zoning Reform.** Would you support zoning reforms to increase housing production and create more affordable and environmentally sustainable communities such as...
- a. Requiring multi-family zoning and removing costly parking mandates around public transportation and city/town centers statewide? **YES. In Somerville I worked to support ending parking minimums, which negatively impact housing production and are counter to our sustainable transportation goals.**
 - b. Enabling communities to adopt inclusionary zoning ordinances (i.e., requirements that a certain percentage of new units in a development be affordable) by simple majority vote? **YES. Inclusionary housing is an important lever for municipalities to ensure that housing production is affordable and that market-rate development can help fund units. Further, inclusionary housing is a tool that should also respond to market conditions and municipalities and the state government should carefully consider the extent to which inclusionary zoning benefits communities and where excess rates can hinder actual housing development.**
14. **MBTA Communities Law Enforcement.** Would you support measures to strengthen the law with stricter consequences for municipalities that refuse to comply, including voiding non-compliant zoning? **YES**

The MBTA Communities Law is a great step forward for the state in tackling a regional housing issue, but we need to do more. By design, the law targets previous community investments in public transportation. We cannot allow those community-wide investments to sit idly by refusing to commit to housing near public transportation options.

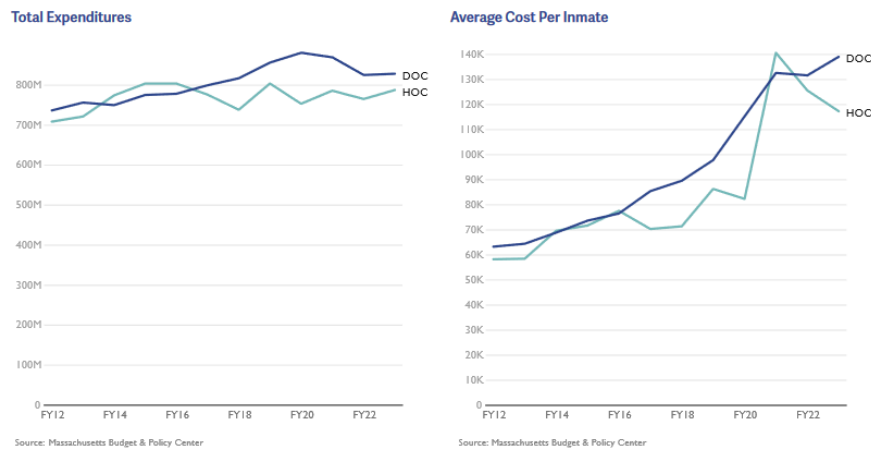
F. Community Safety

Mass incarceration in Massachusetts has proven socially and economically destructive, breaking apart communities across the state. Even though Massachusetts has one of the lowest incarceration rates of the United States, we have some of the [starkest racial disparities in incarceration](#), a result of overpolicing and systemic biases.

Although incarceration rates in Massachusetts have gone down over the past few years as a result of policies from the 2018 criminal justice reform omnibus bills, spending on the Department of Correction has [risen](#). The average cost per year to house an individual in the Massachusetts Department of Corrections is [more than](#) \$100,000, money that could be better reinvested into the communities that have suffered from decades of misguided and racially discriminatory “tough on crime” policies. To achieve “justice for all,” we need a judicial system that does not disproportionately target communities of color and the poor and that does not criminalize public health issues such as addiction.

The correctional population in Massachusetts has declined, yet the state continues to increase the Department of Corrections budget.

Figure 14: Total expenditures for correctional institutions and average cost per inmate, inflation-adjusted to 2023 dollars



Although MA's incarceration rate is lower than the national rate, racial disparities are even more stark. ([Source](#))

Statistics (2022)	MA	US Total
Imprisonment rate (per 100K residents)	94	355
Black : White Disparity	7 : 1	4.8 : 1
Latinx : White Disparity	4 : 1	1.3 : 1

1. Please share your principles and proposals regarding community safety, police accountability, and criminal legal reform.

Public safety must be effective, humane, and forward looking. I have supported prison diversion initiatives that reduce recidivism and keep families together while maintaining accountability. I have championed embedding social workers alongside police to respond to mental health crises and nonviolent emergencies more effectively. And as a state senator I will continue to advocate for modern public safety strategies that protect residents, support first responders, and invest in prevention.

2. Optional/As Applicable: Please indicate work you personally have done to advance your principles on community safety, police accountability, and criminal legal reform (legislation, community work, published writings, etc.).

As mentioned above, I have supported prison diversion initiatives that reduce recidivism and keep families together while maintaining accountability. I have championed embedding social workers alongside police to respond to mental health crises and nonviolent emergencies more effectively. And as a state senator I will continue to advocate for modern public safety strategies that protect residents, support first responders, and invest in prevention.

3. **Police Accountability.** The 2020 police accountability law passed by the Massachusetts Legislature contained a number of steps forward, but important measures were left out. Would you support legislation to do the following?

- a. Eliminating qualified immunity for state and local police and correctional officers so that individuals whose constitutional rights are violated can have their fair day in court? **YES**
- b. Enacting the recommendations from the special legislative commission on facial recognition, to implement privacy, civil rights, and due process protections to govern police use of the technology? **YES**

4. **Sentencing Reform.** The 2018 criminal justice reform bill was an important first step in reducing mass incarceration. However, in our "liberal" state, incarceration rates remain much higher than they are in other countries, and sentencing laws can be even more punitive than those in states viewed as conservative. Do you support the following reforms?

- a. Eliminating mandatory minimums for all drug offenses? **YES**
- b. Raising the age of criminal majority from 18 to 21, in line with research that shows that young offenders served by a juvenile system are much less likely to reoffend and more likely to successfully transition to adulthood? **YES**
- c. Decriminalizing consensual sexual activity between adolescents, by creating an exception to the statutory rape law for youth close in age? Massachusetts is one of only three states that criminalizes consensual sexual activity between

two adolescents. **YES**

- d. Eliminating the sentence of life without parole, which is costly and has been shown to be racist in its application? **YES**
 - e. Restructuring joint venture sentencing such that accomplices to murder are sentenced proportionally to their level of responsibility for a death rather than a minimum sentence of life without parole? **YES**
5. **DOC Oversight -- I.** Would you support legislation to establish an inspector general for the Department of Correction? **YES**
 6. **DOC Oversight -- II.** Massachusetts legislators have the statutory right to make unannounced visits to correctional facilities run by the state. Would you commit to visiting, whether announced or scheduled, Department of Corrections facilities as a state legislator? **YES**
 7. **Solitary Confinement.** Would you support legislation to create universal access to productive out of cell time with programming, education and vocational training for all incarcerated people? **YES**
 8. **Prison Moratorium.** Would you support a moratorium on the construction of new prisons and jails in the Commonwealth? **YES**
 9. **Keeping Families Connected.** Would you support eliminating the arbitrary, unnecessary restrictions on visitation rights in prisons and jails? **YES**
 10. **Clean Slate.** The Massachusetts court system maintains a database of name-based court arraignment records, referred to as Massachusetts Criminal Offender Record Information (CORI). Many people are trapped in poverty and shut out of jobs and housing because of the difficult process to expunge their records, even for cases that did not end in a conviction or occurred when they were teenagers. Would you support...
 - a. Requiring the Commissioner of Probation to automatically seal criminal and juvenile records after the applicable waiting periods without requiring individuals to file a petition to do so? **YES**
 - b. Requiring the immediate sealing of a criminal offense if the charge did not end in a conviction? **YES**
 11. **Reentry.** The Department of Correction's stated mission is to "prepare [individuals in custody] for safe and successful reentry into the community," but regularly fails to live up to that. Do you support the following measures to strengthen reentry efforts...
 - a. Mandating that correctional facilities in Massachusetts assist incarcerated individuals in acquiring valid Massachusetts identification cards before their release? **YES**
 - b. Increasing funding for reentry-related programming? **YES**

12. **Gun Violence Prevention.** Will you vote YES to protect the 2024 gun safety bill on the ballot in November 2026? **YES**

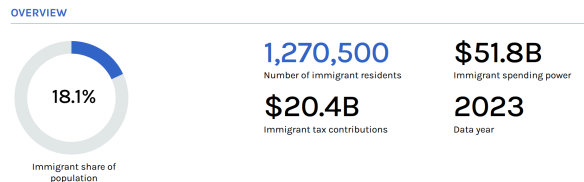
G. A Humane Immigration System

Immigrants make up [18%](#) of Massachusetts's population; however, demagoguery against, or indifference to, immigrant populations has historically been a mainstay of Massachusetts politics. We too often see both Democrats and Republicans fear-monger about immigration and the border, championing policies that criminalize rather than welcome.

Since Trump took office in January, ICE has escalated its activities in Massachusetts, terrorizing immigrant communities. ICE arrests have gone up by more than [250%](#) since last year, driven by their targeting of individuals without criminal records. ICE has brutalized children, torn families apart, and engaged in rampant racial profiling.

Our immigrant communities are helping to keep our communities healthy, they are innovating and educating, and they are helping us build a better future for all of us.

Immigrants are a major part of MA's economic prosperity. ([Source](#))



1. Please share your principles and proposals regarding welcoming and protecting our immigrant communities.

Immigrants are central to the economic, cultural, and civic life of this community and this country. Progressive values mean centering underrepresented populations, like my strong immigrant district in East Somerville. Progressive politics is focused on economic and social progress for the working class and for the marginalized in our community. It means ensuring that the government is there to protect our neighbors and ensure all people have the opportunity for a life free from oppression and with dignity and basic needs met.

2. Optional/As Applicable: Please indicate work you personally have done to advance your principles on welcoming and protecting our immigrant communities (legislation, community work, published writings, etc.).

I helped codify Somerville's Sanctuary City status into law, protecting residents and affirming shared values. I have promoted immigrant owned small businesses and supported expanded city services that help newcomers navigate daily life. In the Senate, I will stand firm for immigrant rights, inclusion, and policies that allow every resident to live without fear.

3. **Protecting Our Immigrant Neighbors.** The entanglement of state and local law enforcement with ICE's federal immigration enforcement makes everyone less safe. To end such entanglement, would you support the following measures...?
 - a. Preventing police and court officials from inquiring about immigration status? **YES, which I worked to codify in the Somerville Welcoming Community Ordinance.**
 - b. Prohibiting any new 287(g) agreements, i.e., agreements in which state and local law enforcement are deputized to act as ICE agents? **YES**
 - c. Calling on Gov. Healey to end the Department of Correction's 287(g) agreement with ICE, the only such contract in New England and the only such contract in a state with a Democratic governing trifecta? **YES**
 - d. Prohibiting local law enforcement from assisting ICE such as by allowing ICE to use facilities, properties, and equipment or providing information to ICE such as relating to upcoming court appearances? **YES**
4. **Language Access.** Would you support building the capacity of key public-facing state agencies to meet the language access needs of an increasingly diverse population by standardizing and enforcing language access protocols and practices? **YES**
5. **Immigrant Legal Aid.** In 2025, the MA Legislature created a new fund to provide cost-free legal services to immigrants at risk of deportation. Would you support increasing the funding for the program and codifying the fund into law? **YES**
6. **Community Trust and Accountability.** Would you support legislation to ban former ICE or Border Patrol agents from serving as police officers, teachers, or other public

employees in Massachusetts? **YES**

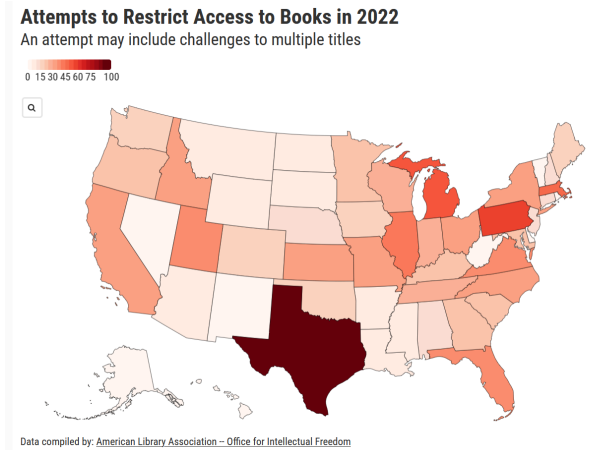
H. A Welcoming Society

Our commonwealth is at its strongest when we recognize and celebrate the diversity of our population.

Massachusetts has often been a leader on LGBTQ rights, being the first state to legalize same-sex marriage and having passed a strong trans anti-discrimination law (with additional protections for health care passed more recently). However, efforts to ban LGBTQ-friendly books are not just a "red state" problem but unfortunately far too common here at home.

Although Massachusetts likes to view itself as a leader in social progress, racial discrimination has been prevalent in our history and in our present, and a legacy of oppression and expropriation of indigenous communities remains unaddressed in policy and iconography.

In 2022, there were 45 attempts to restrict access to books in MA, with 57 titles challenged. ([Source](#))



1. Please explain your principles and proposals relative to building a welcoming society.

Massachusetts does a lot in terms of growing a welcoming community and I support continuing that cause, but too many residents are being forced out due to an affordability crisis that is impacting working families. Massachusetts loses more residents to Florida than any state in the country. As we lose community members to displacement and rising costs, especially marginalized community members, we lose our ability to stand up for them locally.

2. Optional/As Applicable: Please indicate work you personally have done to make MA a more welcoming place for all.

Somerville prides itself as being a welcoming community to immigrants, LGBTQ people, and marginalized people from all walks of life, and I am proud to be part of that tradition. As an elected official, a union leader, a community leader, and a neighbor I have always centered the needs of our most vulnerable neighbors.

3. **Right to Read.** Right-wing efforts to ban books from school or public libraries disproportionately target books about LGBTQ people and communities of color. Would you support legislation to prevent book removal due to personal or political views in public and school libraries, require public libraries to adopt the American Library Association's Library Bill of Rights, and protect librarians from retaliation? **YES**
4. **Data Privacy.** In recent years, we have seen the dangers of unregulated data markets: right-wing groups tracking women seeking abortion care, domestic abusers tracking partners/exes, ICE agents tracking immigrants, and much more.
 - a. Do you support passing legislation to ban companies from selling our sensitive data, such as biometric and location information? **YES**
 - b. Do you support applying a private right of action to privacy laws, to ensure consumers have access to the civil court system when companies violate the law? **YES**
5. **Indigenous People's Day.** Would you support legislation to replace Columbus Day with Indigenous Peoples in state statute as the recognized holiday on the second

Monday of October? **YES**

6. **School Mascots.** Would you support legislation to prohibit the use of Native American mascots in Massachusetts public schools? **YES**

I. Good Government and Strong Democracy

A strong democracy depends on a transparent and representative government and an engaged public. Too often, however, we see centralized, unaccountable power and barriers to participation. An undemocratic, centralized power structure on Beacon Hill makes it easier for lobbyists to target the top and undermine the system. Despite recent reforms, a weak public records system stymies government accountability: MA is one of only two states where all three branches of state government claim to be exempt. A strong democracy requires an engaged electorate, but voter turnout in midterm elections, and especially local elections, remains low. Although election modernization legislation in 2014, 2018, and 2022 helped bring much-needed reforms, we still lag behind states in New England and around the country in making voting accessible (Maine, for instance, has allowed for Election Day Registration since the 1970s).

A centralized power system, a skewed campaign finance system, and restrictive voting laws together help create a situation in which our elections are the [least competitive in the country](#).

MA has the least competitive elections in the country. ([Source](#))

State Legislative Competitiveness Index in Massachusetts, 2010-2024					
Year	Open seats	Incs. in contested primaries	Major party competition	Competitiveness Index	Rank
2010	17.0%	8.4%	48.0%	24.5	39 / 44
2012	5.0%	10.0%	33.0%	16.0	44 / 44
2014	11.0%	9.6%	38.5%	19.7	39 / 44
2016	6.5%	10.7%	23.0%	13.4	44 / 44
2018	12.0%	11.4%	30.0%	17.8	44 / 44
2020	7.5%	12.4%	21.0%	13.6	44 / 44
2022	12.0%	11.9%	30.0%	18.0	44 / 44
2024	9.5%	9.9%	20.0%	13.1	44 / 44

Lower-income, ethnically diverse municipalities have lower voter turnout than whiter, more affluent communities, leading to reduced voice in state politics.

<u>Municipality</u>	<u>Turnout (Nov 2022)</u>
Lawrence	22.8%
Springfield	24.9%
Lowell	29.7%
Chelsea	31.7%
New Bedford	33.0%
Fall River	33.0%
Brockton	33.1%
Southbridge	34.3%
Holyoke	34.4%
Lynn	35.0%

[Source: MassLive](#)

1. Please explain your principles and proposals relative to good government and strong democracy.

Government works best when residents can see how decisions are made and how resources are allocated. I helped lead the first comprehensive overhaul of Somerville's city charter in more than 100 years, modernizing city governance, increasing transparency, and improving the budget process. At the state level, I will work to make government more accessible, accountable, and responsive to the people it serves.

2. Optional/As Applicable: Please indicate work you personally have done to promote transparency, campaign finance reform, legislative rules reform, and access to voting.

As mentioned above, I helped lead the first comprehensive overhaul of Somerville's city charter in more than 100 years, modernizing city governance, increasing transparency, and improving the budget process. At the state level, I will work to make government more accessible, accountable, and responsive to the people it serves.

3. **Accessibility.** Central to good government is accessibility and responsiveness. Would you commit to the following?

- a. Sending out a newsletter that includes explanations of recent votes at least once per month? **YES**
- b. Holding office hours on weeknights or weekends at least once per month? **YES**
- c. Holding town halls in your district at least twice per year? **YES**

4. **Public Records Law.** Massachusetts is the only state where the Governor's Office, the Legislature, and the Judiciary claim full exemptions from the public records laws. Do you support the ballot initiative to eliminate these exemptions? **YES**

5. **Legislative Accountability.** Massachusetts's system of 'leadership stipends' is an outlier among the 50 states. Do you support the ballot initiative to reform this system to create a fairer pay structure and hold committees to higher standards of transparency and productivity? **YES**

6. **Legislative Research Bureau.** The Massachusetts legislature is the only legislature in the nation without a professional, non-partisan research bureau. Would you support the creation of such an office? **YES**

7. **Expanding Access to Public Meetings.** Would you support updating Open Meeting Law so that people can choose to participate remotely in public meetings on a permanent basis and providing the necessary funds to municipalities to implement this? **YES**

8. **Same Day Registration.** Massachusetts lags behind other states in making voting accessible for all. Do you support eliminating Massachusetts's arbitrary and

exclusionary 10-day voter registration cutoff and allowing voters to register or update their registration at the polls on Election Day and during the early voting period? **YES**

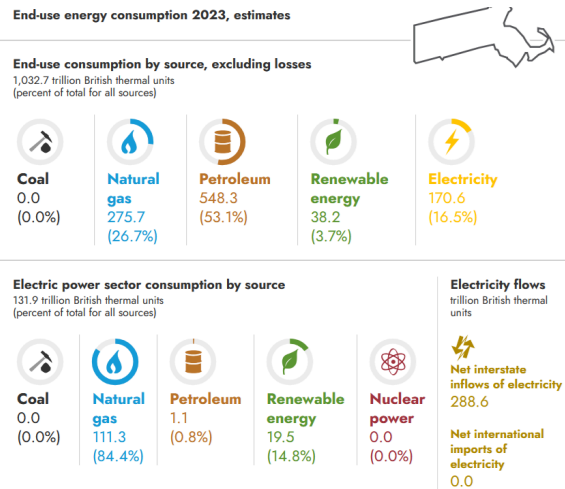
9. **Inactive Voter Lists.** Massachusetts is the *only* state in the country where voters are placed on the Inactive Voter List—one step before being removed from the voter rolls—if they fail to return our annual municipal census. Do you support removing this barrier to participation? **YES**
10. **Ranked Choice Voting.** Would you support legislation to allow cities and towns to adopt ranked choice voting in local elections? **YES**
11. **Universal Voting Rights.** Would you support restoring the franchise to incarcerated individuals serving time for felony convictions (Their right to vote was taken away by ballot twenty years ago)? **YES**

J. Sustainable Infrastructure and Environmental Protection

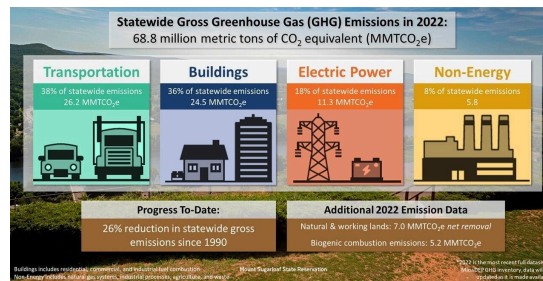
As a coastal state, Massachusetts will be hit particularly hard by climate change, but we are not responding with the necessary urgency. Massachusetts has ambitious and necessary greenhouse gas reduction goals, but we are [not on track](#) to meet them. Our state remains overly dependent on fossil fuels like oil and gas despite the pollution and myriad public health harms they produce and the ample [data](#) showing that we must leave fossil fuels in the ground. As we now face a federal government hostile to renewable and climate action, the responsibility lies with state government to take leadership in accelerating a green energy transition and ensuring that equity is at the forefront.

Public transit must play a role in decarbonizing our transportation system, as well as advancing complementary goals of equity and inclusion. However, Massachusetts politicians have lost their understanding of public transit as a public good that benefits all residents and businesses in Massachusetts, not just those who use it in their daily lives. The greatest evidence of this is their neglect of the MBTA: it would need [more than \\$24 billion](#) to bring infrastructure and equipment up to a state of good repair. Regional Transit Authorities that serve communities, including Gateway Cities across the state, face enormous capital needs as well.

Despite recent progress, Massachusetts is still overwhelmingly dependent on fossil fuels.



Transportation is currently the largest contributor to greenhouse gas emissions in MA.



1. Please explain your principles and proposals relative to sustainable infrastructure and environmental protection.

Safe communities are resilient communities and we need to continue to invest in sustainable infrastructure and environmental protection. That includes investing in fossil fuel free building, decarbonization of existing buildings, and investing in solutions that help residents make those choices as well. We're seeing increased flooding issues as a result of climate change and more extreme weather events and we need to make sure our communities, and especially environmental justice communities are being invested in.

2. Optional/As Applicable: Please indicate work you personally have done to protect the environment and expand access to public transportation.

I supported efforts in Somerville to further fossil fuel free construction and I have supported massive investments in stormwater infrastructure to handle increasing storm severity. I have consistently been a leader on our City's Vision Zero efforts, our Bike Network Plan, our Safe Streets Ordinance, and our advocacy around bus priority and the new Better Bus Network, all of which are cutting edge efforts to make streets safer for walking, biking, and public transit.

3. **Fossil Fuel Infrastructure.** Do you oppose the expansion of fossil fuel infrastructure in the state? **YES**
4. **Make Polluters Pay.** Do you support holding the corporations who are most responsible for causing global climate change financially accountable to pay for damages caused by climate driven extreme weather and the infrastructure improvements needed for resilience? **YES**
5. **Expanding Solar Coverage.** Would you support legislation to create permanent incentives for siting solar projects where they have the least environmental impact, i.e., on buildings and disturbed land? **YES**
6. **Banning Predatory Industry Practices.** Third-party electricity suppliers notoriously give confusing or misleading offers and often target low-income and older adults. Would you support banning third-party electricity suppliers that sell directly to residents? **YES**
7. **Utility Accountability.** Would you support legislation that restricts investor-owned utilities' profits, including but not limited their ability to recover lobbying, advertisement, trade association dues, and investor relations expenses on utility bills? **YES**
8. **Data Centers.** Data centers across Massachusetts and the country have been driving heavier energy and water usage, leading to higher costs for everyday customers. Would you support the following measures...?
 - a. Requiring primary-use data centers to pay for the cost of utility infrastructure upgrades, procure renewable back-up energy sources, and provide quarterly

water and energy usage data? **YES**

b. Imposing a moratorium on new large-load data centers while a commission is convened to define appropriate community and environmental regulations?
YES

c. Repealing tax exemptions for data centers? **YES**

9. **Plastic Bag Ban.** Would you support a statewide ban on single-use plastic bags?
YES

10. **Electrifying Public Transit.** In Massachusetts, 43 percent of GHG emissions in 2016 came from transportation infrastructure and vehicles. Tackling this will require a shift away from cars and toward public transit, as well as electrification of both. Would you support requiring the MBTA to operate an all-electric system by 2035? **YES**

11. **Free Public Transit.** Do you support making public transit in the Commonwealth fare-free? **YES**

III. ADDITIONAL COMMENTS

Limit answer to 150 words or fewer.

Use this space to add any other issues important to your vision for Massachusetts or any other matter you think progressive voters should know about your candidacy.

I am dedicated to making my community and this state more affordable for the people who live here. In all my policy priorities I will center working families and community safety. I believe my perspective is needed at the state senate, where the voices of many vulnerable community members are too often drowned out by the special interests and crippling bureaucracy that halt progress on essential public goods. I am running for office because this community has become unaffordable for so many people and we are losing too many community members. In Somerville I have worked for decades to advocate for fair wages, affordable housing, and community needs. I am taking that fight to the state level because there is so much more work to do to ensure that Massachusetts is an affordable and safe place to live for working families.