



PROGRESSIVE MASSACHUSETTS
2026 Legislative
ENDORSEMENT QUESTIONNAIRE

Candidate: Will Mbah

Office Sought: State Representative, 34th Middlesex

Party: Democrat

Website: www.willmbah.com

Social Media Handles: <https://www.facebook.com/WillMbah>

OVERVIEW

We view our questionnaire as an educational resource, for both candidates and voters, on progressive approaches to the issues. It provides candidates the opportunity to address a number of important issues beyond the surface talking points and provides progressive voters an extremely valuable resource when making a decision.

Our Questionnaire starts with an “About You” section and ends with an opportunity for you to include additional remarks beyond what we asked.

The bulk of our questionnaire is focused on the issues outlined in our [Progressive Platform](#), which also inform our [Legislative Agenda](#). We are interested in your overall philosophy as well as your views on specific policy and legislation.

Each section features charts or graphs (with links to sources) that illustrate one or more facets of the issue under discussion.

*Each section contains open-ended questions and YES/NO questions. **If the question is a YES/NO question, please answer either YES or NO.** If you leave a question blank, your answer will be recorded as a NO. Feel free to expand your answers, but **please keep answers < 150 words** and use your own words (we want human-generated answers, not AI-generated).*

Issue Subsections:

- A. Revenue and Taxation
- B. Jobs and the Economy
- C. Education
- D. Health Care
- E. Housing
- F. Community Safety
- G. A Humane Immigration System
- H. A Welcoming Society
- I. Good Government and Strong Democracy
- J. Sustainable Infrastructure and Environmental Protection

I. About You & Your Governing Approach

1. Why are you running for office? And what would be your top 3 priorities if elected?

I'm running because the challenges our community faces require leadership that understands both City Hall and Beacon Hill. This is about continuity, competence, and community. One of my top priorities in the Legislature will be addressing the housing crisis.

Too many families, seniors, students, and workers are struggling to remain in the communities they love. We need a statewide strategy that significantly expands affordable housing, strengthens tenant protections, supports first-time homeownership opportunities, and invests in social and public housing models.

Transportation is another issue I hear about every single day from residents. Our region depends on a functioning public transit system, yet too many people are dealing with unreliable service, delays, and aging infrastructure. I will advocate for sustained investment in the MBTA and regional transit systems so people can get to work, school, and home safely and reliably.

Public education will remain central to my work. Every child deserves access to a well-funded public school system regardless of zip code. I support increased state investment in schools, expanded mental health services, stronger support for multilingual learners and students with disabilities, and pathways that connect students to good-paying careers.

Climate action is also deeply personal to me. My professional background includes work in clean energy and sustainability policy, and I believe Massachusetts can lead the nation in building a green economy that creates union jobs, lowers energy costs, and protects vulnerable communities from the impacts of climate change.

2. What prepares you to serve in this capacity?

I have the lived and legislative experience as someone who understands both city hall and Beacon Hill.

3. Do you consider yourself progressive, and if so, how would you define "progressive"?

Yes, to me being a progressive means confronting inequality, protecting civil rights, strengthening labor protections, addressing the housing and climate crises, and ensuring that wealth and power are not concentrated in the hands of a few.

4. What do you view as the biggest obstacles to passing progressive policy at the state level, and how do you plan to overcome these obstacles?

Power is concentrated in leadership and there is also significant influence from well-funded interests that often resist reforms around the issues. Overcoming these challenges means we must stay connected to movements on the ground and are willing to engage communities directly to build momentum around shared priorities.

5. What is one policy pioneered by another state (or at the municipal level) that you would like to see Massachusetts adopt?

Vienna has a strong social housing model which we can adopt. A stronger social housing strategy would help stabilize rents, expand affordable home options, and ensure that housing is treated as essential infrastructure rather than primarily as a commodity.

6. Provide an example of a time that you built a broad coalition to achieve a desired outcome.

One example was helping co-found the Somerville Alliance for Safe Streets, where we organized residents, advocates, local officials, and transportation stakeholders around the urgent need for traffic safety improvements along McGrath Highway. The corridor had long divided neighborhoods and posed serious safety risks for pedestrians, cyclists, and drivers.

7. (For incumbents only) Each year, Progressive Massachusetts compiles a scorecard of key roll call votes, available at <https://scorecard.progressivemass.com>. Please use this space to explain any discrepancies between your votes and the progressive position.

8. (For challengers or candidates in open races only) How do you see yourself as similar to or different from the current holder of the office you are running for?

I respect Christine Barber and her years of public service to the district. I would bring my own distinct perspective rooted in my background as an immigrant, community organizer, and municipal policymaker.

II. The Issues

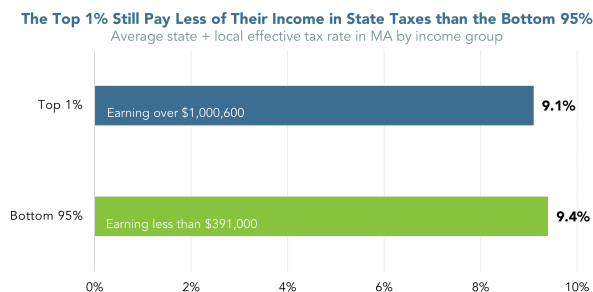
A. Revenue and Taxation

Although Massachusetts has developed the moniker of “Taxachusetts,” our history shows the opposite. Between 1977 and 2016, Massachusetts [reduced state taxes](#) by more than all but two other states. Because of income tax cuts enacted between 1998 and 2002, Massachusetts lost over \$4 billion in tax revenue *each year*—\$4 billion not invested in our roads, bridges, schools, parks, and services. Such cuts to the state income tax, combined with [low corporate income taxes compared to other states](#), have meant increasing reliance on regressive taxes and fees and curtailing our ability to invest in vital infrastructure. It also restricts legislators’ ability—and willingness—to pass new and visionary legislation, as there is a continual shortage of funds for existing priorities.

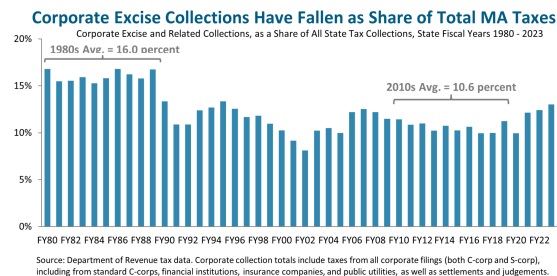
Although we saw a welcome shift when MA voters passed the Fair Share Amendment and added more progressivity to our tax code, the Legislature in 2023 voted to give tax cuts to multi-million-dollar estates, large corporations, and day traders, blunting the full impact of the win. We cannot tax-cut our way into competitiveness; MA strengthens our competitiveness when we invest in our people and infrastructure.

Moreover, Massachusetts faces the threat of steep federal budget cuts, but given that we have the same GDP as the country of Sweden, we have the ability to raise the revenue to meet needs if we have the will to do so.

Even with the recently passed Fair Share Amendment, the top 1% still pay a lower effective tax rate than the bottom 95%.



Even as corporations are securing an increasing share of total income, their share of taxes has been falling.



1. What principles do you bring to considerations of state revenue and tax policy? How should we raise more revenue to adequately fund our communities for the future?

I support progressive revenue policies that expand funding for public education, transportation, affordable housing, climate resilience, healthcare, local services and other major needs. That includes building on measures like the Fair Share Amendment and closing corporate tax loopholes that allow large corporations and wealthy interests to avoid paying their fair share.

2. Optional/As Applicable: Please indicate work you personally have done to advance your principles on revenue and taxation (legislation, community work, published writings, etc.).
3. **Corporate Tax Breaks.** Corporate tax breaks cost Massachusetts [more than \\$1 billion in foregone revenue](#) each year. Which of the following steps would you support?
 - a. Repealing any tax break that does not provide the intended benefits in a cost-effective manner? **YES**
 - b. Establishing sunset dates for all tax breaks to require periodic review? **YES**
 - c. Ending the current sales tax exemptions for aircraft and aircraft parts, which costs the Commonwealth approximately [\\$30 million](#) each year? **YES**
4. **Corporate Disclosure.** Would you support legislation to make publicly accessible the reports that are already filed annually by publicly traded corporations, detailing their sales, profits, taxable income, and taxes paid? **YES**
5. **Corporate Fair Share.** Large multinational corporations like Amazon and Walmart hide significant profits offshore in order to avoid paying taxes here in Massachusetts and in other states. Would you support legislation to increase the amount of offshored corporate income subject to MA's corporate income tax to 50%, the maximum allowable amount and the amount taxed by most of our neighboring states? **YES**
6. **Taxing Extreme Wealth.** Would you support the establishment of a Massachusetts wealth tax, which applies only to extremely rich taxpayers (with a threshold of at least \$100 million) and taxes them on a percentage (e.g., 1% annually) of their wealth above the threshold? **YES**
7. **Digital Ads Tax.** Would you support imposing new tax targeted at large companies that amass our personal data, either through a data-mining excise tax or a tax on digital advertising, as introduced or passed in states like New York and Washington State? **YES**
8. **Preventing Regressive Tax Cuts.** Massachusetts needs to raise new revenue to advance a progressive agenda. At the same time, we also need to fight regressive tax cuts that weaken our public services.
 - a. MA stands to lose hundreds of millions of dollars in revenue each year due to corporate tax cuts in Trump's Big Ugly Bill that will automatically enter the MA

tax code. Do you support permanently decoupling the state tax code from these federal changes? **YES**

- b. Will you oppose the corporate lobby's ballot question to reduce the state income tax, a measure which would cost the state \$5 billion a year? **YES**
 - c. Will you oppose the corporate lobby's ballot question to reform the state tax collection cap law (62F) in order to make the state more frequently hit the cap and lose out on critical investments? **YES**
9. **Rainy Day Fund.** Massachusetts will see significant budget cuts next year due to Trump's Big Ugly Bill. Would you support using 15% of the rainy day fund in order to prevent cuts? **YES**
10. **PILOT Reform.** Do you support enabling cities and towns to require large tax-exempt not-for-profit institutions (i.e., with property valued at or above \$15M) to make payments in lieu of taxes to the municipality equal to 25 percent of the amount that would be paid if they were not exempt? **YES**
11. **Public Bank.** Would you support the creation of a Massachusetts public bank chartered to provide cost-effective financing for small businesses and municipalities, land trusts and cooperatives, and climate adaptation/remediation projects? **YES**

B. Jobs and the Economy

Massachusetts ranks as one of the top ten [most unequal states](#), as the gains from economic growth have disproportionately benefited the already well-off. Compounding this, we are one of the most expensive states in the country for [health care](#), [housing](#), and [child care](#), all of which strain wages. A strong economy depends on strong wages, as workers spend and help local economies thrive. Although Massachusetts now has a \$15 minimum wage, a living wage for a single adult without children is now [\\$27.89 per hour](#).

In recent decades, unions have been under attack nationally. However, unions played—and continue to play—a pivotal role in creating a strong middle class. With weaker unions (or no unions at all) come weaker social and economic rights and an imbalanced economy. Strengthening the rights and power of labor is essential to an economy that works for all.

Productivity has grown significantly since the 1970s, but it is not being reflected in higher wages.



<https://archive.massbudget.org/reports/swma/>

The minimum wage in Massachusetts is well below a living wage. ([Source](#))

	1 Adult			2 adults (both working)		
	0 children	1 child	2 children	0 children	1 child	2 children
Living Wage	\$30.58	\$58.26	\$76.55	\$19.63	\$31.61	\$39.61
Poverty Wage	\$7.67	\$10.40	\$13.13	\$5.20	\$6.57	\$7.93
Minimum Wage	\$15.00	\$15.00	\$15.00	\$15.00	\$15.00	\$15.00

1. Share your principles and proposals regarding creating good-paying jobs for all and reducing inequality in the Commonwealth.

Fundamentally, everyone deserves access to a good-paying job with dignity, stability, safe working conditions, and the freedom to organize. In practice, that means strengthening labor protections, supporting union organizing, raising wage standards, enforcing worker protections, and investing in sectors that create long-term economic opportunity. I support progressive tax and revenue policies that allow the Commonwealth to invest in communities that have historically been underserved and excluded from economic opportunity.

2. Optional/As Applicable: Please indicate work you personally have done to advance your principles on creating good-paying jobs for all and reducing inequality (legislation, community work, published writings, etc.).

I am currently working to strengthen our wage theft ordinance to improve enforcement and accountability for workers facing exploitation and unpaid wages. I have also stood alongside unions and workers, Harvard Graduate Union, Stop and Shop, Tufts dining workers, in advocating for better wages, safer working conditions, and stronger labor protections.

3. **Livable Wages.** Although Massachusetts now has a \$15 minimum wage, that is still not a living wage in much of Massachusetts, and \$15 has lost a lot of value due to high inflation. Do you support the following steps...?
 - a. Raising the minimum wage to \$20 per hour? **YES**
 - b. Eliminating subminimum wages? **YES**
 - c. Ensuring that the minimum wage law applies to municipal workers? **YES**
 - d. Indexing the minimum wage to inflation? **YES**
4. **Wage Theft.** Do you support holding businesses responsible for the wage violations of their subcontractors when the work they do is substantially connected to the company's operations? **YES**
5. **Paid Leave for All Workers.** In 2018, MA passed the strongest paid family and medical leave law in the country. However, the law did not include municipal workers or graduate student workers. Would you support extending the law to make sure that all workers have access to these vital benefits? **YES**
6. **Paid Time Off.** The US is the only advanced industrial country where workers are not guaranteed paid time off. Would you support legislation to require employers to offer full-time employees at least two weeks of paid time off each year, which they can use for any reason with no loss of pay? **YES**
7. **Right to Strike.** Would you support legislation to legalize the right to strike for public employees (with the exception of public safety personnel) after six months of failed negotiations with their employer? **YES**
8. **State House Unionization.** Would you support legislation to extend collective bargaining rights to State House staff? **YES**

C. Education

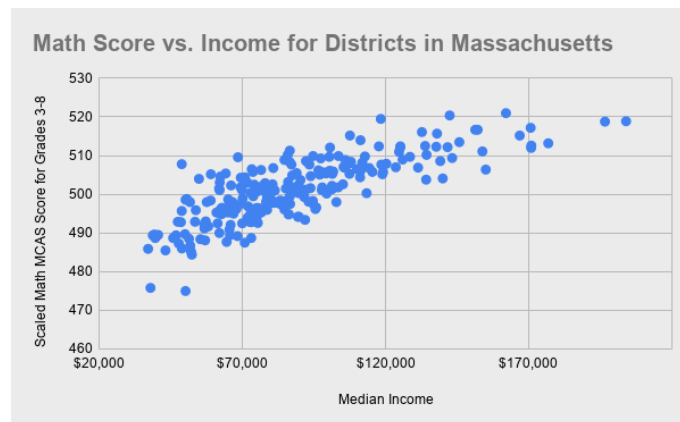
Massachusetts parents and caregivers face the [highest child care and early education costs of any state in the US](#). The average annual cost of infant care in Massachusetts is more than half of what a full-time minimum wage worker earns in a year. These costs are prohibitively expensive for low- and middle-income families, who are forced to choose between making ends meet and saving for the future on one hand, or affording child care on the other.

Public education plays a fundamental role in democracy, cultivating informed, well-rounded community members and providing the knowledge and skills needed for economic mobility and opportunity. Although our public education system gets high marks overall, it remains one of the [most unequal](#) in the country, with significant opportunity and resource divides based on income and race. In 2019, Massachusetts passed the Student Opportunity Act to update the formula for state aid to public school districts and correct these inequities, but schools have faced added strains due to the pandemic and inflation.

Public education has also been under attack by powerful corporate interests seeking to undermine public schools, teachers, and unions. These groups invest millions of dollars to promote the expansion of privately run charter schools, which siphon money from our public K-12 districts while largely excluding students with the greatest needs. Costly, mandated standardized test results are used to label schools as “failing” and justify these privatization schemes. State receiverships in struggling school districts take power away from communities and often facilitate privatization schemes that could never achieve democratic support.

At the same time, our understanding of education has also broadened. No longer do we only talk about K-12 education; rather, most of the [fastest-growing occupations](#) require education beyond a high school diploma. Massachusetts has been disinvesting from public higher education for the past two decades, leading to higher tuition costs and putting students at risk of long-term debt (if they are even still able to attend). Our public colleges and opportunities are an economic engine for local economies as well as a pathway to economic opportunity, and when that opportunity is cut off for students, we all lose out.

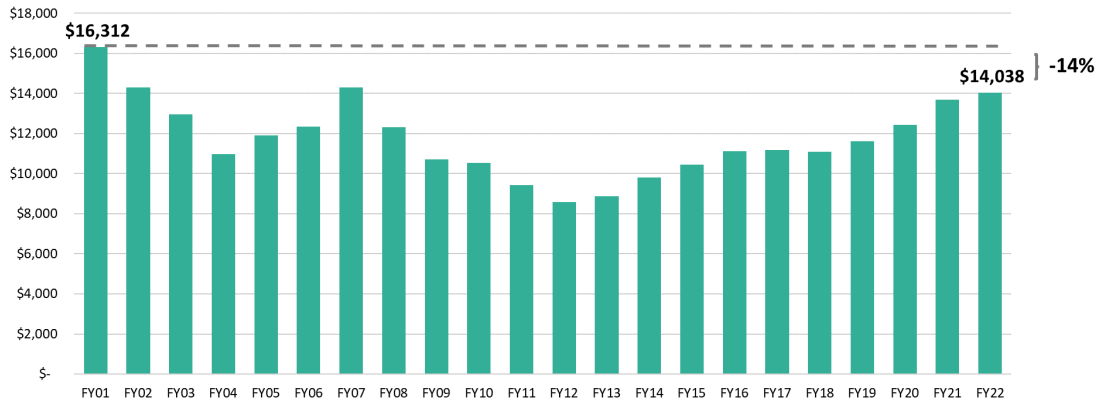
Standardized test scores have a very strong correlation with the income of the school district. ([Source](#))



Massachusetts has been disinvesting from higher education and shifting the cost burden onto students. ([Source](#))

Higher Education Funding Per Student Cut by 14 Percent Since FY 2001

Massachusetts higher education spending, per resident student, FY 2001-FY2022 adjusted for inflation (2024\$)



1. Please share your principles and proposals regarding public education.

I fundamentally believe every student deserves access to a high-quality, fully funded public education regardless of zip code, income, race, language, or disability status, and of course public education should be a public good. We need to increase support for special education and mental health services which is so lacking in our schools. I also support making public colleges and universities more affordable and reducing the burden of student debt so that education is accessible to all working families.

2. Optional/As Applicable: Please indicate work you personally have done to advance your principles on public education.

I have stood alongside the Somerville teachers union and advocated for the paraprofessionals, and they got a pay increase. I have also supported MTA by putting forward a [city council resolution](#) called the Drive ACT in support of fair funding, strong labor protections, and investments in public education. I have also advocated for policies that strengthen affordability, equity, and access for students and working families in our communities.

3. **Affordable Child Care.** Would you support legislation to make child care free for low-income families and ensure that no family has to pay more than 7% of their income on child care? **YES**

4. **Universal Pre-K.** Would you support creating universal, free Pre-K, accessible to any

resident of Massachusetts, integrated into the public school system? **YES**

5. **Charter Schools.** Charter schools siphon millions of dollars for public education away from public schools and create a two-track system of public schools described by the national NAACP as “separate and unequal.” Do you support keeping the cap on charter schools? **YES**
6. **K-12 Education Funding.** Our public schools are losing out on the full benefits of increased funding due to a glitch in how the Chapter 70 formula treats inflation. The combination of several years of high inflation and an inflation cap in education funding calculations has locked in lower levels of aid to districts. Do you support fixing this gap and ensuring that our school districts get the funding they deserve? **YES**
7. **Receivership.** The Lawrence Public Schools and Southbridge Public Schools are currently under state receivership, with a state-appointed receiver assuming the powers of a superintendent or democratically elected school committee. The state takeover has not produced sustainable gains and has at times been characterized by [chronic mismanagement](#). Would you support ending the practice of state receivership and returning power to democratically elected school committees? **YES**
8. **Guaranteed Education for Incarcerated Youth.** Would you support legislation to mandate that at least 6 hours of credited daily education is available for all incarcerated, school-aged youth, including those with IEPs? **YES**
9. **Comprehensive Sex Education.** Do you support requiring public schools to provide age-appropriate, medically accurate information that is inclusive of all sexual orientations and gender identities and includes topics such as consent and the effective use of contraception? **YES**
10. **Inclusive Curricula.** Our educational curricula must speak to students’ lived experiences and recognize and celebrate the diversity of our Commonwealth.
 - a. **Racially Inclusive Curricula.** Would you support legislation to ensure that instruction in K-12 education shall include the teaching of accurate histories, writings, and contributions of racial and ethnic groups that have been historically underrepresented or marginalized? **YES**
 - b. **LGBTQ-Inclusive Curricula.** Would you support legislation to ensure that Massachusetts public schools include sufficient instruction on the histories, roles, and contributions of LGBTQ individuals in the history of this country and the Commonwealth? **YES**
11. **Redistributing Institutional Wealth.** Would you support legislation that would levy a small excise tax on private college and university endowments above \$1B to fund free public higher education for all in-state students? **YES**
12. **Debt-Free Higher Ed.** Would you support legislation to guarantee Massachusetts residents can graduate Massachusetts’ public colleges and trade schools completely free of student loan debt? **YES**
13. **Supporting Public Higher Ed Faculty.** Would you support ensuring that adjunct

faculty and part-time staff are eligible for state health care and retirement benefits?
YES

14. **Student Protest & Academic Freedom.** Will you support the unequivocal rights of students and faculty to peaceful protest and freedom of expression in Massachusetts' public and private institutions of higher education? **YES**

1. Please share your values, principles, and proposals regarding health care access and equity.

I strongly believe healthcare is a human right and that everyone deserves access to affordable, high-quality care regardless of income, immigration status, employment, race, gender identity, or zip code. My belief is also shaped by personal experience. When I first came to the United States as a legal permanent resident, I applied for MassHealth but was denied coverage because I was over 21 and did not have dependents. Yet at the end of the year, I was penalized for not having health insurance. That experience showed me how gaps and contradictions in our system can leave people behind even when they are trying to follow the rules. I support expanding access to primary care, mental healthcare, reproductive healthcare, and community-based services while addressing racial and economic disparities in health outcomes. I also support policies that lower prescription drug costs, strengthen public health infrastructure, protect reproductive and gender-affirming care, and move us toward a more universal and equitable healthcare system.

2. Optional/As Applicable: Please indicate work you personally have done to advance your principles on health care (legislation, community work, published writings, etc.).

All my campaigns have always advocated for universal healthcare or Single Payer.

3. **Single Payer.** Would you support legislation to enact a single payer health care system in Massachusetts, which would guarantee health insurance as a right? **YES**
4. **Medical Debt.** States like Connecticut and Arizona have taken action, in partnership with RIP Medical Debt, to eliminate medical debt for hundreds of thousands of working-class residents. Would you advocate for similar action in Massachusetts? **YES**
5. **Full Spectrum Pregnancy Care.** Would you support requiring health insurance plans to cover all pregnancy care (including prenatal care, childbirth, and postpartum care), without any kind of cost-sharing, building on the recent mandate to require coverage for abortion and abortion-related care? **YES**
6. **Abortion Access - 1 .** Young people under sixteen seeking an abortion must obtain parental consent or judicial authorization. While most young people involve their parents, many cannot, causing delays to timely medical care and counseling. Scared teens may also turn to dangerous measures: going out of state or risking their lives and health with illegal or self-induced abortion. Would you support repealing this restriction on young people's access to abortion? **YES**
7. **Abortion Access - 2.** Despite recent overdue updates to abortion care protections in Massachusetts, dozens of patients have to travel out of state every year for necessary care. Would you support expanding abortion access after 24 weeks of pregnancy when in the best professional judgement of a licensed physician? **YES**
8. **Anti-Abortion Centers.** In Massachusetts, anti-abortion centers (also known as crisis pregnancy centers), which have a politically-motivated agenda to dissuade and delay

patients from accessing abortion care, outnumber abortion clinics by more than 2 to 1. These centers scare and shame pregnant people considering abortion care and often oppose birth control and emergency contraception. Would you commit to opposing any Massachusetts government support and funding for such centers? **YES**

9. **Overdose Prevention Centers.** An essential part of addressing the opioid crisis, overdose prevention centers allow medical professionals to respond to overdoses and engage participants in medical and behavioral health services. Would you support the legalization of overdose prevention centers? **YES**
10. **Vaccination.** Would you support legislation to eliminate non-medical exemptions to the routine vaccines for children required for school entry, as our neighbors in Maine, Connecticut, and New York have already done? **YES**

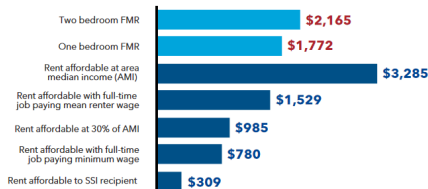
E. Housing

Massachusetts has a lot to offer, but that does little if people can't afford to live here. The [US News & World Report's annual state rankings](#) put Massachusetts at #40 in housing affordability (and #47 in cost of living). To rent the average 2-bedroom apartment in Massachusetts requires an income equal to [\\$41.64 per hour](#), more than twice the minimum wage. A minimum-wage worker in Massachusetts would need to [work 91 hours each week](#) to afford a modest 1-bedroom rental home at fair market rent.

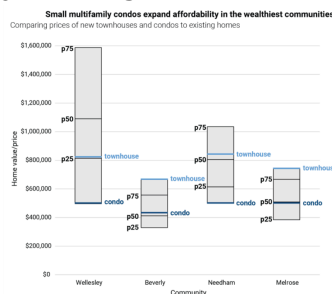
Home ownership has become increasingly out of reach, as the state's median home price is [approximately \\$600,000](#). In more than 20 communities, the median home price recently [passed \\$1 million](#). Meanwhile, we have some of the [most restrictive zoning laws](#) in the country, making it difficult to build more housing to meet the needs of a growing population.

The high cost of housing has led to displacement, and in a growing number of municipalities, the local workforce can no longer afford to live there.

With rental increases far outpacing wage increases, many are left with housing instability.



The overreliance of single-family housing in suburban development, as opposed to denser or multi-family housing, makes communities unaffordable.



Source: Existing home values taken from the Census Bureau's American Community Survey 2014-2018. Prices for new townhouses and condos from Crump, Mattos, Schatz and Schuster (2020). Metropolitan Policy Program at Brookings

1. Please share your principles and proposals regarding affordable housing and housing affordability in the Commonwealth.

For me, housing is a human right, and Massachusetts cannot address inequality, economic stability, or public health without confronting the housing crisis directly. My commitment to this issue is deeply personal. In my first six years living in Somerville, I moved five times because of rising housing costs and instability. Like many renters and working families, I experienced firsthand how unaffordable housing disrupts people's lives, weakens communities, and creates constant uncertainty. That experience is one of the reasons I first ran for public office on affordability and housing justice, and why I later ran for mayor in 2021 on a platform that included rent stabilization and stronger tenant protections. I believe Massachusetts must dramatically increase the production of deeply affordable housing while also strengthening protections for tenants and preventing displacement. I support a comprehensive approach that includes expanding housing production near transit, increasing public investment in affordable and social housing, strengthening tenant protections, legalizing more multifamily housing, and giving municipalities tools like rent stabilization to address rapidly rising rents. I also support stronger inclusionary zoning policies, protections against eviction and discrimination, and investments in supportive housing and homelessness prevention.

2. Optional/As Applicable: Please indicate work you personally have done to advance your principles on housing (legislation, community work, published writings, etc.).

Housing affordability was a central reason I first ran for public office, and once elected I helped lead the effort to create Somerville's Office of Housing Stability. That office works to support tenants facing eviction, connect residents to housing resources and legal assistance, provide housing navigation services, and help stabilize vulnerable households at risk of displacement.

3. **Emergency Shelter.** How would you evaluate Governor Healey's response to the emergency shelter crisis?

I think the crisis exposed deeper structural problems in Massachusetts' housing system and the need for a more long-term, proactive response. Emergency shelter alone cannot solve homelessness. We need substantially greater investment in affordable and social housing, stronger tenant protections, expanded homelessness prevention programs, and better coordination between state and local governments.

4. **Welcoming New Neighbors.** Would you support efforts to locate both long-term housing and short-term shelter in your district? **YES**

5. **Everyone Needs ID.** Would you support easing access to Mass IDs for people experiencing homelessness by waiving the \$25 fee for IDs and easing the verification requirements for youth and adults who are unhoused and seeking IDs? **YES**

6. **Local Option Real Estate Transfer Fee.** Would you support enabling all cities and towns the flexibility to design and pass real estate transfer fees that will be effective in their municipalities to raise money for affordable housing production? **YES**
7. **Green and Affordable Communities.** Would you support doubling the current Deeds Excise Tax (from \$4.56 per \$1,000 to \$9.12 per \$1,000), upon the sale of real property in Massachusetts, to create a new funding stream to be split evenly between affordable housing and climate resiliency? **YES**
8. **Rent Control.** Massachusetts residents face some of the highest and fastest-growing rents in the country.
 - a. Would you support lifting the statewide ban on rent control and enabling cities and towns to pass rent stabilization ordinances to limit annual rent increases? **YES**
 - b. Do you support the proposed 2026 statewide ballot initiative to limit annual rent increases? **YES**
9. **Tenant Opportunity to Purchase.** Would you support providing tenants of small, medium, and large multifamily properties with the right of first refusal when the owner plans to put a building on the market? **YES**
10. **Right to Counsel.** Would you support legislation to provide legal representation for low-income tenants in eviction proceedings? **YES**
11. **HDIP Reform.** The Housing Development Incentive Program (HDIP) is a multimillion-dollar annual state tax credit program subsidizing market-rate housing in Gateway Cities. Would you support reforming this program to support both market-rate and affordable housing development? **YES**
12. **Social Housing.** Social housing is publicly financed, mixed-income housing, owned by a local or regional housing authority. Would you support efforts to increase state funding for social housing initiatives? **YES**
13. **Zoning Reform.** Would you support zoning reforms to increase housing production and create more affordable and environmentally sustainable communities such as...
 - a. Requiring multi-family zoning and removing costly parking mandates around public transportation and city/town centers statewide? **YES**
 - b. Enabling communities to adopt inclusionary zoning ordinances (i.e., requirements that a certain percentage of new units in a development be affordable) by simple majority vote? **YES**
14. **MBTA Communities Law Enforcement.** Would you support measures to strengthen the law with stricter consequences for municipalities that refuse to comply, including voiding non-compliant zoning? **YES**

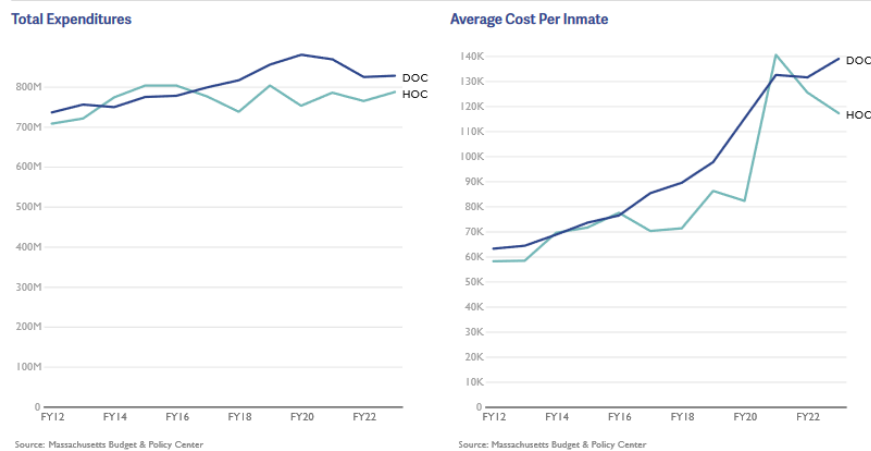
F. Community Safety

Mass incarceration in Massachusetts has proven socially and economically destructive, breaking apart communities across the state. Even though Massachusetts has one of the lowest incarceration rates of the United States, we have some of the [starkest racial disparities in incarceration](#), a result of overpolicing and systemic biases.

Although incarceration rates in Massachusetts have gone down over the past few years as a result of policies from the 2018 criminal justice reform omnibus bills, spending on the Department of Correction has [risen](#). The average cost per year to house an individual in the Massachusetts Department of Corrections is [more than](#) \$100,000, money that could be better reinvested into the communities that have suffered from decades of misguided and racially discriminatory “tough on crime” policies. To achieve “justice for all,” we need a judicial system that does not disproportionately target communities of color and the poor and that does not criminalize public health issues such as addiction.

The correctional population in Massachusetts has declined, yet the state continues to increase the Department of Corrections budget.

Figure 14: Total expenditures for correctional institutions and average cost per inmate, inflation-adjusted to 2023 dollars



Although MA's incarceration rate is lower than the national rate, racial disparities are even more stark. ([Source](#))

Statistics (2022)	MA	US Total
Imprisonment rate (per 100K residents)	94	355
Black : White Disparity	7 : 1	4.8 : 1
Latinx : White Disparity	4 : 1	1.3 : 1

1. Please share your principles and proposals regarding community safety, police accountability, and criminal legal reform.

True community safety comes from stable housing, economic opportunity, mental health support, quality education, violence prevention, and strong community trust, not solely from policing and incarceration. We need a public safety system that is fair, accountable, transparent, and centered on protecting the dignity and rights of all residents. My perspective is also shaped by personal experience: I was racially profiled in the city, which underscored for me how harmful and destabilizing unequal enforcement can be and how urgently we need stronger protections against discrimination. I support strengthening police accountability and oversight, including civilian review structures, improving transparency around use of force and misconduct, expanding crisis response and mental health services, and investing in prevention-based approaches to public safety. After being elected, I moved forward efforts to ban racial profiling locally and, following the murder of George Floyd, I supported the creation of a civilian oversight board to increase accountability and public trust. I also support criminal legal reforms that address racial disparities, reduce unnecessary incarceration, expand diversion and reentry programs, and ensure equal justice under the law. In Somerville, I have worked to strengthen our sanctuary and welcoming ordinance and have advocated for reducing reliance on school policing in order to interrupt the school-to-prison pipeline. Public safety and civil rights must go hand in hand. Communities are safest when residents trust public institutions and when government addresses the root causes of harm and instability.

2. Optional/As Applicable: Please indicate work you personally have done to advance your principles on community safety, police accountability, and criminal legal reform (legislation, community work, published writings, etc.).

As a local elected official, I have worked on policies to advance police accountability and community-centered safety, including efforts to ban racial profiling, strengthen civilian oversight, and improve transparency in policing. Following the murder of George Floyd, I supported the creation of a civilian oversight board to enhance accountability and rebuild public trust. I have also worked to strengthen Somerville's sanctuary and welcome ordinance and advocated for reducing police presence in schools to help address the school-to-prison pipeline. In addition, I have supported investments in housing stability, youth opportunity, and mental health services as core components of long-term public safety. I have also spoken on these legislation at the state house such as the Safe Communities Act and the Protect Act.

3. **Police Accountability.** The 2020 police accountability law passed by the Massachusetts Legislature contained a number of steps forward, but important measures were left out. Would you support legislation to do the following?
 - a. Eliminating qualified immunity for state and local police and correctional officers so that individuals whose constitutional rights are violated can have

their fair day in court? **YES**

- b. Enacting the recommendations from the special legislative commission on facial recognition, to implement privacy, civil rights, and due process protections to govern police use of the technology? **YES**
4. **Sentencing Reform.** The 2018 criminal justice reform bill was an important first step in reducing mass incarceration. However, in our “liberal” state, incarceration rates remain much higher than they are in other countries, and sentencing laws can be even more punitive than those in states viewed as conservative. Do you support the following reforms?
 - a. Eliminating mandatory minimums for all drug offenses? **YES**
 - b. Raising the age of criminal majority from 18 to 21, in line with research that shows that young offenders served by a juvenile system are much less likely to reoffend and more likely to successfully transition to adulthood? **YES**
 - c. Decriminalizing consensual sexual activity between adolescents, by creating an exception to the statutory rape law for youth close in age? Massachusetts is one of only three states that criminalizes consensual sexual activity between two adolescents. **YES**
 - d. Eliminating the sentence of life without parole, which is costly and has been shown to be racist in its application? **YES**
 - e. Restructuring joint venture sentencing such that accomplices to murder are sentenced proportionally to their level of responsibility for a death rather than a minimum sentence of life without parole? **YES**
5. **DOC Oversight -- I.** Would you support legislation to establish an inspector general for the Department of Correction? **YES**
6. **DOC Oversight -- II.** Massachusetts legislators have the statutory right to make unannounced visits to correctional facilities run by the state. Would you commit to visiting, whether announced or scheduled, Department of Corrections facilities as a state legislator? **YES**
7. **Solitary Confinement.** Would you support legislation to create universal access to productive out of cell time with programming, education and vocational training for all incarcerated people? **YES**
8. **Prison Moratorium.** Would you support a moratorium on the construction of new prisons and jails in the Commonwealth? **YES**
9. **Keeping Families Connected.** Would you support eliminating the arbitrary, unnecessary restrictions on visitation rights in prisons and jails? **YES**
10. **Clean Slate.** The Massachusetts court system maintains a database of name-based court arraignment records, referred to as Massachusetts Criminal Offender Record Information (CORI). Many people are trapped in poverty and shut out of jobs and

housing because of the difficult process to expunge their records, even for cases that did not end in a conviction or occurred when they were teenagers. Would you support...

- a. Requiring the Commissioner of Probation to automatically seal criminal and juvenile records after the applicable waiting periods without requiring individuals to file a petition to do so? **YES**
 - b. Requiring the immediate sealing of a criminal offense if the charge did not end in a conviction? **YES**
11. **Reentry.** The Department of Correction's stated mission is to "prepare [individuals in custody] for safe and successful reentry into the community," but regularly fails to live up to that. Do you support the following measures to strengthen reentry efforts...
- a. Mandating that correctional facilities in Massachusetts assist incarcerated individuals in acquiring valid Massachusetts identification cards before their release? **YES**
 - b. Increasing funding for reentry-related programming? **YES**
12. **Gun Violence Prevention.** Will you vote YES to protect the 2024 gun safety bill on the ballot in November 2026? **YES**

G. A Humane Immigration System

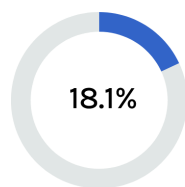
Immigrants make up [18%](#) of Massachusetts's population; however, demagoguery against, or indifference to, immigrant populations has historically been a mainstay of Massachusetts politics. We too often see both Democrats and Republicans fear-monger about immigration and the border, championing policies that criminalize rather than welcome.

Since Trump took office in January, ICE has escalated its activities in Massachusetts, terrorizing immigrant communities. ICE arrests have gone up by more than [250%](#) since last year, driven by their targeting of individuals without criminal records. ICE has brutalized children, torn families apart, and engaged in rampant racial profiling.

Our immigrant communities are helping to keep our communities healthy, they are innovating and educating, and they are helping us build a better future for all of us.

Immigrants are a major part of MA's economic prosperity. ([Source](#))

OVERVIEW



Immigrant share of population

1,270,500

Number of immigrant residents

\$20.4B

Immigrant tax contributions

\$51.8B

Immigrant spending power

2023

Data year

1. Please share your principles and proposals regarding welcoming and protecting our immigrant communities.

Immigrants are essential members of our communities and should be treated with dignity, respect, and full inclusion regardless of status. As an immigrant from Cameroon, I know firsthand what it means to build a life in a new country, navigate complex systems, and rely on community support and public institutions to find stability and opportunity. That experience shapes my belief that immigration policy should be grounded in humanity, fairness, and belonging. Strong, welcoming communities are safer, more vibrant, and more economically resilient. Our policies should reflect Massachusetts' values of fairness, human rights, and equal protection under the law. I support strengthening and expanding "sanctuary" and welcome policies that limit local cooperation with federal immigration enforcement, protect access to city and state services, and ensure immigrants can engage with schools, healthcare, housing, and public life without fear. I also support expanding language access, legal assistance, worker protections, and pathways to stability for immigrant families. We must ensure immigrant communities are not excluded from opportunity or targeted unfairly, and that government actively builds trust and inclusion.

2. Optional/As Applicable: Please indicate work you personally have done to advance your principles on welcoming and protecting our immigrant communities (legislation, community work, published writings, etc.).

As an immigrant from Cameroon and a local elected official, I have worked to ensure immigrant communities are supported, included, and protected in both policy and practice. I have been a strong supporter of the Immigrant Legal Defense Fund and efforts to expand access to free legal counsel for immigrants facing detention or deportation, recognizing that legal representation can be the difference between stability and displacement for families.

I have also supported expanding language access across city services so that residents can fully engage with government regardless of English proficiency, and I have advocated for policies that make public services more accessible and equitable for immigrant communities.

In addition, I volunteer in my community helping immigrants prepare for U.S. citizenship, including teaching civics content and supporting individuals as they prepare for the citizenship exam. This work reflects my belief that civic participation should be accessible, and that we are stronger when new Americans are fully supported in becoming part of our democratic life.

3. **Protecting Our Immigrant Neighbors.** The entanglement of state and local law enforcement with ICE's federal immigration enforcement makes everyone less safe. To end such entanglement, would you support the following measures....?
- a. Preventing police and court officials from inquiring about immigration status? **YES**
 - b. Prohibiting any new 287(g) agreements, i.e., agreements in which state and local law enforcement are deputized to act as ICE agents? **YES**
 - c. Calling on Gov. Healey to end the Department of Correction's 287(g) agreement with ICE, the only such contract in New England and the only such contract in a state with a Democratic governing trifecta? **YES**
 - d. Prohibiting local law enforcement from assisting ICE such as by allowing ICE to use facilities, properties, and equipment or providing information to ICE such as relating to upcoming court appearances? **YES**
4. **Language Access.** Would you support building the capacity of key public-facing state agencies to meet the language access needs of an increasingly diverse population by standardizing and enforcing language access protocols and practices? **YES**
5. **Immigrant Legal Aid.** In 2025, the MA Legislature created a new fund to provide cost-free legal services to immigrants at risk of deportation. Would you support increasing the funding for the program and codifying the fund into law? **YES**
6. **Community Trust and Accountability.** Would you support legislation to ban former ICE or Border Patrol agents from serving as police officers, teachers, or other public

employees in Massachusetts? **YES**

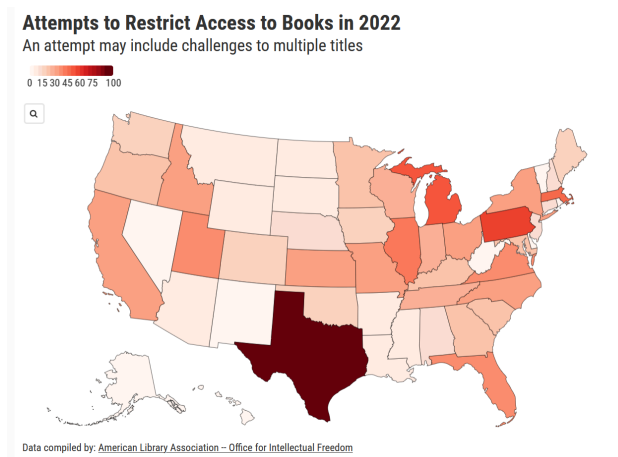
H. A Welcoming Society

Our commonwealth is at its strongest when we recognize and celebrate the diversity of our population.

Massachusetts has often been a leader on LGBTQ rights, being the first state to legalize same-sex marriage and having passed a strong trans anti-discrimination law (with additional protections for health care passed more recently). However, efforts to ban LGBTQ-friendly books are not just a "red state" problem but unfortunately far too common here at home.

Although Massachusetts likes to view itself as a leader in social progress, racial discrimination has been prevalent in our history and in our present, and a legacy of oppression and expropriation of indigenous communities remains unaddressed in policy and iconography.

In 2022, there were 45 attempts to restrict access to books in MA, with 57 titles challenged. ([Source](#))



1. Please explain your principles and proposals relative to building a welcoming society.

A welcoming society is one where every person regardless of race, ethnicity, immigration status, language, religion, gender identity, sexual orientation, or income can live with dignity, safety, and full access to opportunity. Our State is strongest when we actively protect diversity, expand inclusion, and ensure that public institutions reflect and serve all residents. Of course, it means confronting discrimination in all its forms, including ongoing racial inequities and attempts to restrict LGBTQ+ inclusion in schools and public life.

2. Optional/As Applicable: Please indicate work you personally have done to make MA a more welcoming place for all.
3. **Right to Read.** Right-wing efforts to ban books from school or public libraries disproportionately target books about LGBTQ people and communities of color. Would you support legislation to prevent book removal due to personal or political

views in public and school libraries, require public libraries to adopt the American Library Association's Library Bill of Rights, and protect librarians from retaliation? **YES**

4. **Data Privacy.** In recent years, we have seen the dangers of unregulated data markets: right-wing groups tracking women seeking abortion care, domestic abusers tracking partners/exes, ICE agents tracking immigrants, and much more.
 - a. Do you support passing legislation to ban companies from selling our sensitive data, such as biometric and location information? **YES**
 - b. Do you support applying a private right of action to privacy laws, to ensure consumers have access to the civil court system when companies violate the law? **YES**
5. **Indigenous People's Day.** Would you support legislation to replace Columbus Day with Indigenous Peoples in state statute as the recognized holiday on the second Monday of October? **YES**
6. **School Mascots.** Would you support legislation to prohibit the use of Native American mascots in Massachusetts public schools? **YES**

I. Good Government and Strong Democracy

A strong democracy depends on a transparent and representative government and an engaged public. Too often, however, we see centralized, unaccountable power and barriers to participation. An undemocratic, centralized power structure on Beacon Hill makes it easier for lobbyists to target the top and undermine the system. Despite recent reforms, a weak public records system stymies government accountability: MA is one of only two states where all three branches of state government claim to be exempt. A strong democracy requires an engaged electorate, but voter turnout in midterm elections, and especially local elections, remains low. Although election modernization legislation in 2014, 2018, and 2022 helped bring much-needed reforms, we still lag behind states in New England and around the country in making voting accessible (Maine, for instance, has allowed for Election Day Registration since the 1970s).

A centralized power system, a skewed campaign finance system, and restrictive voting laws together help create a situation in which our elections are the [least competitive in the country](#).

MA has the least competitive elections in the country. ([Source](#))

State Legislative Competitiveness Index in Massachusetts, 2010-2024					
Year	Open seats	Incs. in contested primaries	Major party competition	Competitiveness Index	Rank
2010	17.0%	8.4%	48.0%	24.5	39 / 44
2012	5.0%	10.0%	33.0%	16.0	44 / 44
2014	11.0%	9.6%	38.5%	19.7	39 / 44
2016	6.5%	10.7%	23.0%	13.4	44 / 44
2018	12.0%	11.4%	30.0%	17.8	44 / 44
2020	7.5%	12.4%	21.0%	13.6	44 / 44
2022	12.0%	11.9%	30.0%	18.0	44 / 44
2024	9.5%	9.9%	20.0%	13.1	44 / 44

Lower-income, ethnically diverse municipalities have lower voter turnout than whiter, more affluent communities, leading to reduced voice in state politics.

<u>Municipality</u>	<u>Turnout (Nov 2022)</u>
Lawrence	22.8%
Springfield	24.9%
Lowell	29.7%
Chelsea	31.7%
New Bedford	33.0%
Fall River	33.0%
Brockton	33.1%
Southbridge	34.3%
Holyoke	34.4%
Lynn	35.0%

[Source: MassLive](#)

1. Please explain your principles and proposals relative to good government and strong democracy.

Democracy must be something people can see, understand, and participate in not something that feels distant or controlled by insiders. That means government should be open, responsive, and structured in a way that allows residents to understand decisions and have real influence over them not just during elections, but throughout the policymaking process.

2. Optional/As Applicable: Please indicate work you personally have done to promote transparency, campaign finance reform, legislative rules reform, and access to voting.
3. **Accessibility.** Central to good government is accessibility and responsiveness. Would you commit to the following?
 - a. Sending out a newsletter that includes explanations of recent votes at least once per month? **YES**
 - b. Holding office hours on weeknights or weekends at least once per month? **YES**
 - c. Holding town halls in your district at least twice per year? **YES**
4. **Public Records Law.** Massachusetts is the only state where the Governor's Office, the Legislature, and the Judiciary claim full exemptions from the public records laws. Do you support the ballot initiative to eliminate these exemptions? **YES**
5. **Legislative Accountability.** Massachusetts's system of 'leadership stipends' is an outlier among the 50 states. Do you support the ballot initiative to reform this system to create a fairer pay structure and hold committees to higher standards of transparency and productivity? **YES**
6. **Legislative Research Bureau.** The Massachusetts legislature is the only legislature in the nation without a professional, non-partisan research bureau. Would you support the creation of such an office? **YES**
7. **Expanding Access to Public Meetings.** Would you support updating Open Meeting Law so that people can choose to participate remotely in public meetings on a permanent basis and providing the necessary funds to municipalities to implement this? **YES**
8. **Same Day Registration.** Massachusetts lags behind other states in making voting accessible for all. Do you support eliminating Massachusetts's arbitrary and exclusionary 10-day voter registration cutoff and allowing voters to register or update their registration at the polls on Election Day and during the early voting period? **YES**
9. **Inactive Voter Lists.** Massachusetts is the *only* state in the country where voters are placed on the Inactive Voter List—one step before being removed from the voter rolls—if they fail to return our annual municipal census. Do you support removing this barrier to participation? **YES**

10. **Ranked Choice Voting.** Would you support legislation to allow cities and towns to adopt ranked choice voting in local elections? **YES**

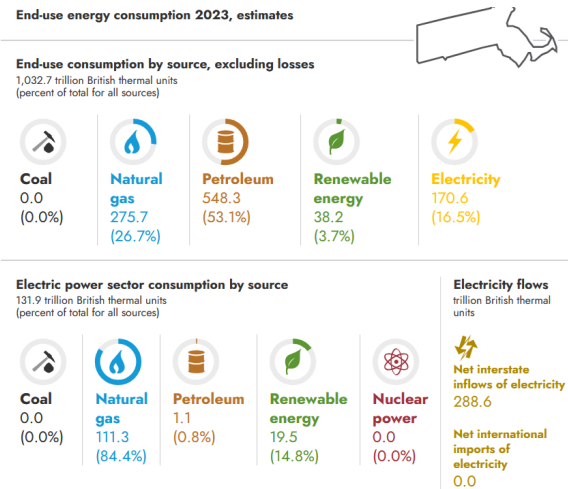
11. **Universal Voting Rights.** Would you support restoring the franchise to incarcerated individuals serving time for felony convictions (Their right to vote was taken away by ballot twenty years ago)? **YES**

J. Sustainable Infrastructure and Environmental Protection

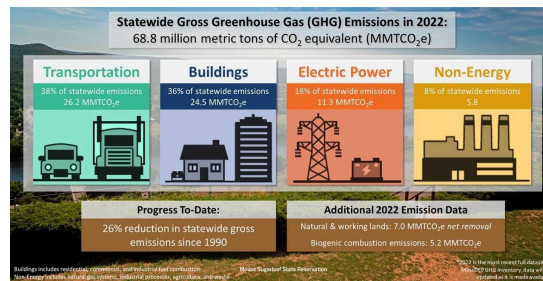
As a coastal state, Massachusetts will be hit particularly hard by climate change, but we are not responding with the necessary urgency. Massachusetts has ambitious and necessary greenhouse gas reduction goals, but we are [not on track](#) to meet them. Our state remains overly dependent on fossil fuels like oil and gas despite the pollution and myriad public health harms they produce and the ample [data](#) showing that we must leave fossil fuels in the ground. As we now face a federal government hostile to renewable and climate action, the responsibility lies with state government to take leadership in accelerating a green energy transition and ensuring that equity is at the forefront.

Public transit must play a role in decarbonizing our transportation system, as well as advancing complementary goals of equity and inclusion. However, Massachusetts politicians have lost their understanding of public transit as a public good that benefits all residents and businesses in Massachusetts, not just those who use it in their daily lives. The greatest evidence of this is their neglect of the MBTA: it would need [more than \\$24 billion](#) to bring infrastructure and equipment up to a state of good repair. Regional Transit Authorities that serve communities, including Gateway Cities across the state, face enormous capital needs as well.

Despite recent progress, Massachusetts is still overwhelmingly dependent on fossil fuels.



Transportation is currently the largest contributor to greenhouse gas emissions in MA.



1. Please explain your principles and proposals relative to sustainable infrastructure and environmental protection.

Addressing the climate crisis requires urgent, large-scale investment in sustainable infrastructure while ensuring that the transition is equitable and benefits working families. Environmental protection is not separate from housing, transportation, and economic justice; it is deeply connected to all three. My approach is grounded in my background in environmental science and my early volunteer work in environmental justice, where I participated in community data collection along highways and saw firsthand how air pollution disproportionately harms low-income communities. That experience shaped my belief that environmental policy must center public health and equity, not just emissions targets. My priorities include expanding clean, reliable public transportation, reducing reliance on cars, and investing in walkable, transit-oriented communities. We must also accelerate clean energy adoption, improve building efficiency, and modernize infrastructure to reduce emissions while lowering long-term costs for residents. I support practical local environmental protections such as strengthening tree protection ordinances, reducing single-use plastics through measures like plastic straw regulations, and expanding composting and waste reduction programs. These are concrete steps that improve sustainability while building public awareness and shared responsibility. We are already doing this in Somerville though not to scale.

2. Optional/As Applicable: Please indicate work you personally have done to protect the environment and expand access to public transportation.
3. **Fossil Fuel Infrastructure.** Do you oppose the expansion of fossil fuel infrastructure in the state? **YES**
4. **Make Polluters Pay.** Do you support holding the corporations who are most responsible for causing global climate change financially accountable to pay for damages caused by climate driven extreme weather and the infrastructure improvements needed for resilience? **YES**
5. **Expanding Solar Coverage.** Would you support legislation to create permanent incentives for siting solar projects where they have the least environmental impact, i.e., on buildings and disturbed land? **YES**
6. **Banning Predatory Industry Practices.** Third-party electricity suppliers notoriously give confusing or misleading offers and often target low-income and older adults. Would you support banning third-party electricity suppliers that sell directly to residents? **YES**
7. **Utility Accountability.** Would you support legislation that restricts investor-owned utilities' profits, including but not limited their ability to recover lobbying, advertisement, trade association dues, and investor relations expenses on utility bills? **YES**

8. **Data Centers.** Data centers across Massachusetts and the country have been driving heavier energy and water usage, leading to higher costs for everyday customers. Would you support the following measures...?
- a. Requiring primary-use data centers to pay for the cost of utility infrastructure upgrades, procure renewable back-up energy sources, and provide quarterly water and energy usage data? **YES**
 - b. Imposing a moratorium on new large-load data centers while a commission is convened to define appropriate community and environmental regulations? **YES**
 - c. Repealing tax exemptions for data centers? **YES**
9. **Plastic Bag Ban.** Would you support a statewide ban on single-use plastic bags? **YES**
10. **Electrifying Public Transit.** In Massachusetts, 43 percent of GHG emissions in 2016 came from transportation infrastructure and vehicles. Tackling this will require a shift away from cars and toward public transit, as well as electrification of both. Would you support requiring the MBTA to operate an all-electric system by 2035? **YES**
11. **Free Public Transit.** Do you support making public transit in the Commonwealth fare-free? **YES**

III. ADDITIONAL COMMENTS

Limit answer to 150 words or fewer.

Use this space to add any other issues important to your vision for Massachusetts or any other matter you think progressive voters should know about your candidacy.

I am a four-term city councilor with direct City Hall experience, and I am ready to lead from day one on Beacon Hill. I bring both policy experience and lived experience as an immigrant from Cameroon, a father, and a public-school parent whose life story is shaped by many of the issues people are organizing around today, housing affordability, education, immigration, and economic opportunity. My work in local government has been grounded in listening to residents, building coalitions, and turning community priorities into actionable policy. I understand how government works, how to navigate complex systems, and how to deliver results. At this moment, Massachusetts needs leaders who combine lived experience with governing experience and I am prepared to bring both to the State House.